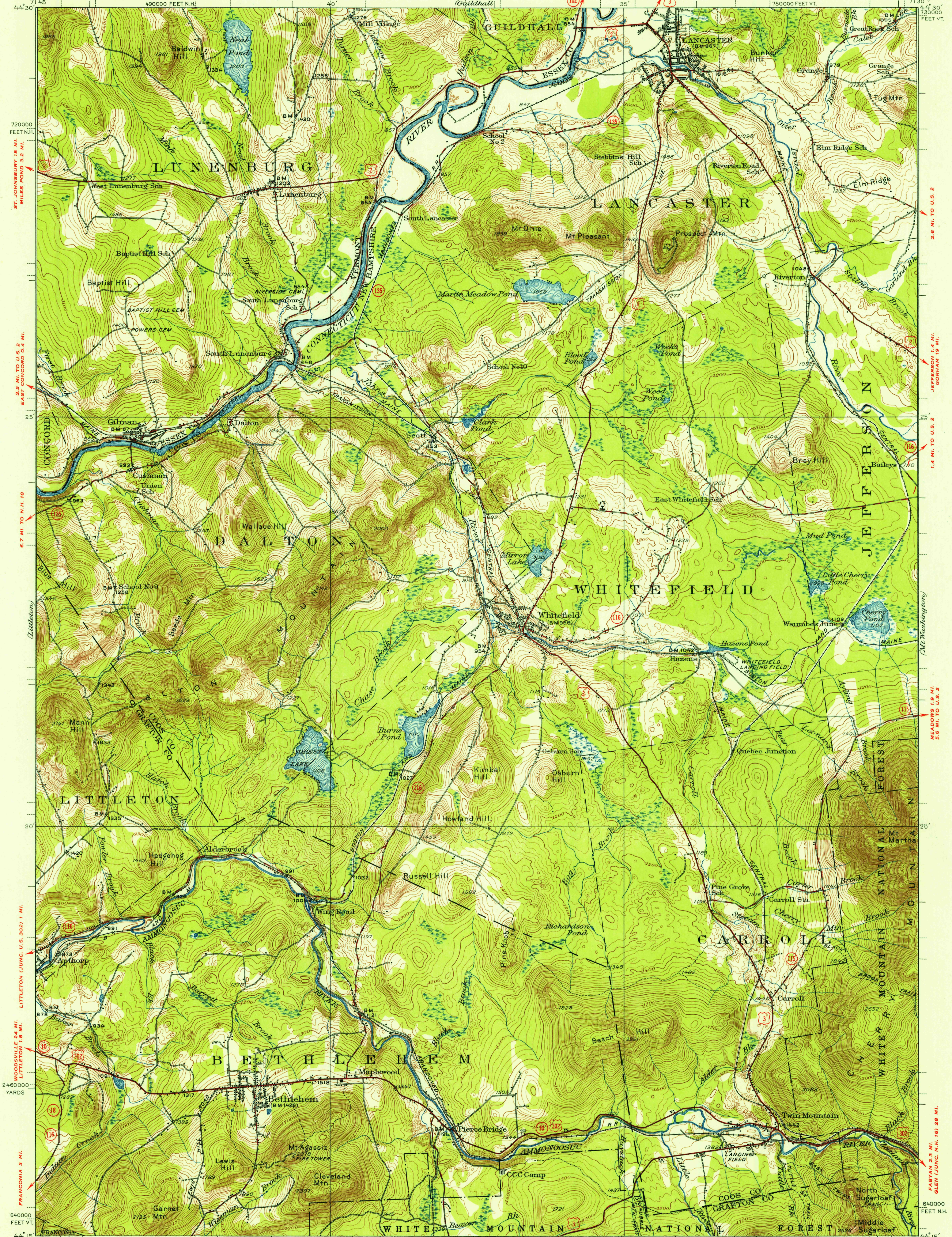


UNITED STATES  
DEPARTMENT OF THE INTERIOR  
GEOLOGICAL SURVEY

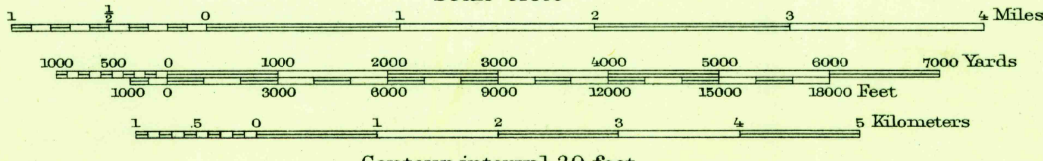
NEW HAMPSHIRE-VERMONT  
WHITEFIELD QUADRANGLE  
750000 FEET VT.



Topography by Roscoe Reeves, A.T. Fowler, S.L. Parker,  
F.H. Sargent, Paul Blake, and R.F. Hamke  
Surveyed in 1934-1935

ROAD CLASSIFICATION  
Heavy-duty ——— 4 LANE 6 LANE Light-duty ———  
Medium-duty ——— 4 LANE 6 LANE Unimproved dirt ———  
U. S. Route ——— State Route ———

APPROXIMATE MEAN  
DECLINATION, 1935



Contour interval 20 feet  
Datum is mean sea level

FOR SALE BY U. S. GEOLOGICAL SURVEY, WASHINGTON 25, D. C.  
A FOLDER DESCRIBING TOPOGRAPHIC MAPS AND SYMBOLS IS AVAILABLE ON REQUEST

Polyconic projection. North American datum  
5000 yard grid based on U.S. zone system. A  
10000 foot grid based on New Hampshire  
and Vermont rectangular coordinate systems

WHITEFIELD, N.H.-VT.  
N 4415-W 7130/15

1935

FILE COPY  
Not to be Removed From Files