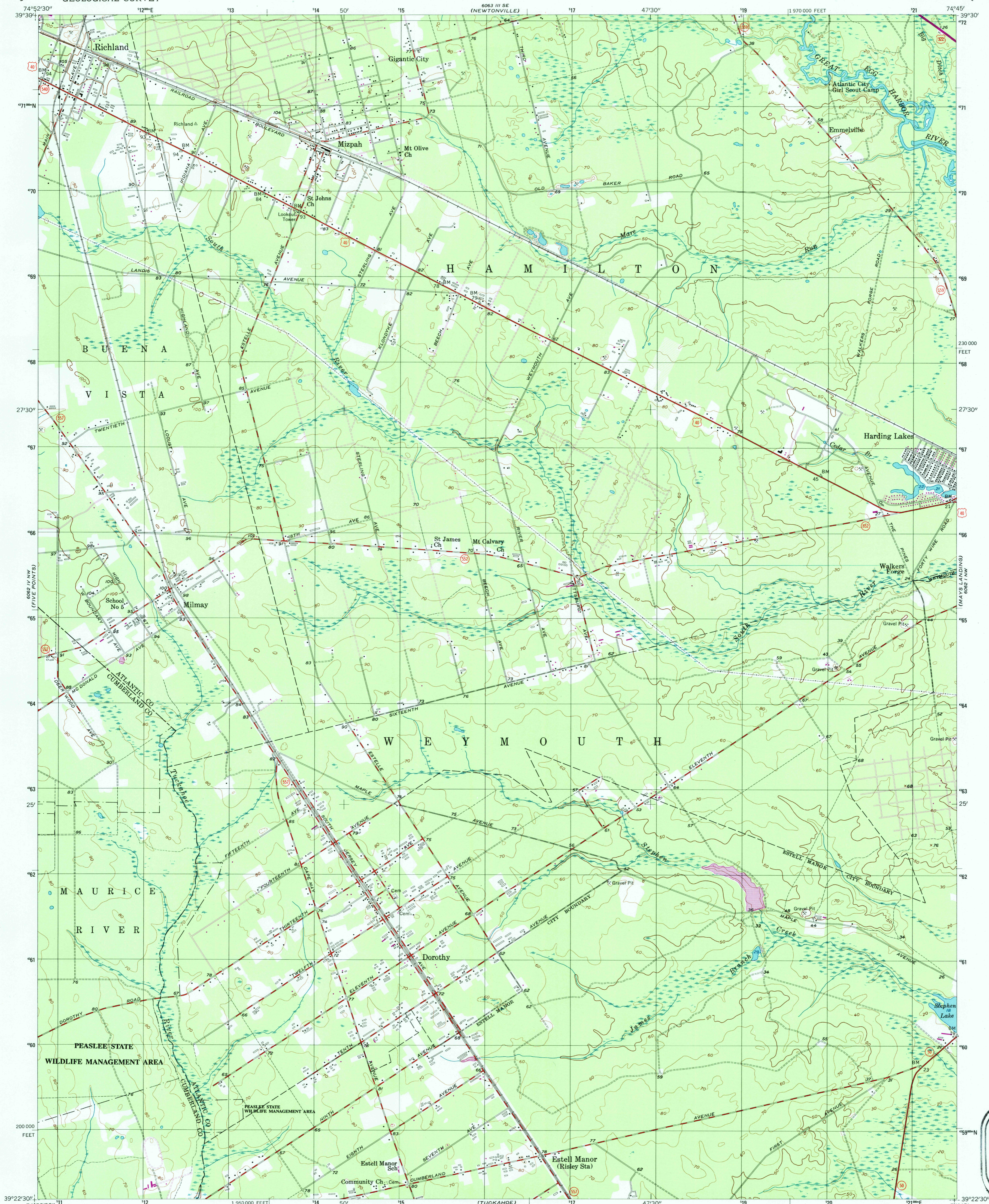
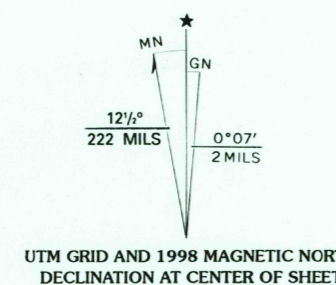


6063 U.S.W.  
(EGG HARBOR CITY)



Produced by the United States Geological Survey  
Topography compiled 1951. Planimetry derived from imagery taken 1972. Photoinspired using imagery dated 1994, no major culture or drainage changes observed. Survey control current as of 1956. Boundaries revised 1998.  
North American Datum of 1927 (NAD 27). Projection and 10 000-foot ticks: New Jersey coordinate system (Lambert conformal conic).  
1000-meter Universal Transverse Mercator grid, zone 18.  
North American Datum of 1983 (NAD 83) is shown by dashed corner ticks. The values of the shift between NAD 27 and NAD 83 for 7.5-minute intersections are obtainable from National Geodetic Survey NADCON software.  
There may be private inholdings within the boundaries of the National or State reservations shown on this map.  
Information shown in purple may not meet USGS content standards and may conflict with previously mapped contours.



CONTOUR INTERVAL 10 FEET  
NATIONAL GEODETIC VERTICAL DATUM OF 1929  
TO CONVERT FROM FEET TO METERS, MULTIPLY BY 0.3048

THIS MAP COMPLIES WITH NATIONAL MAP ACCURACY STANDARDS  
FOR SALE BY U.S. GEOLOGICAL SURVEY, P.O. BOX 25286, DENVER, COLORADO 80225  
A FOLDER DESCRIBING TOPOGRAPHIC MAPS AND SYMBOLS IS AVAILABLE ON REQUEST



ROAD CLASSIFICATION

Primary highway, hard surface	Light duty road, hard or improved surface
Secondary highway, hard surface	Unimproved road
Interstate Route	U.S. Route
	State Route

DOROTHY, N. J. E2

1994

NIMA 6062 IV NE—SERIES V822

USGS AND HISTORICAL  
MAP ARCHIVES  
MAY 31 1998  
REC'D FILE COPY

