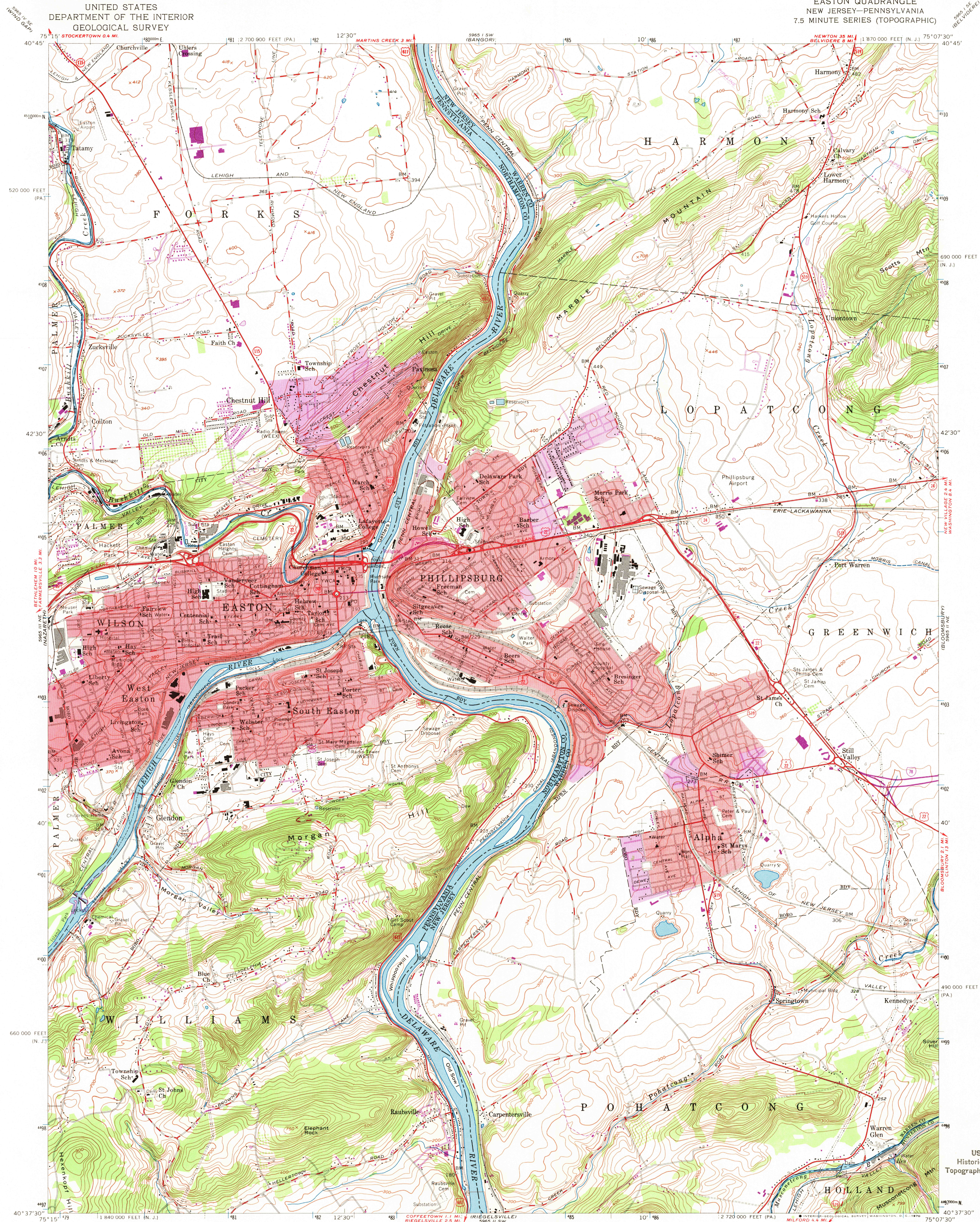


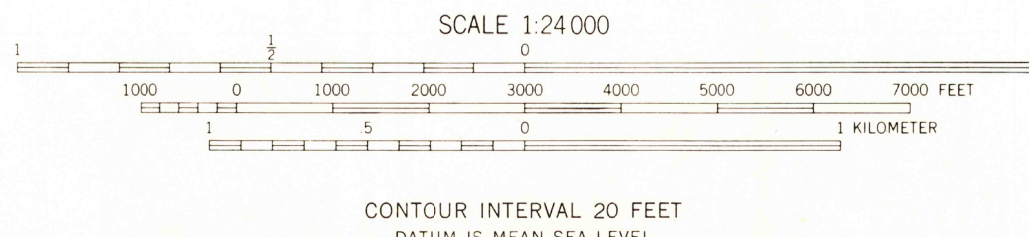
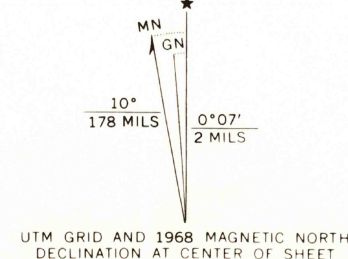
UNITED STATES  
DEPARTMENT OF THE INTERIOR  
GEOLOGICAL SURVEY

EASTON QUADRANGLE  
NEW JERSEY-PENNSYLVANIA  
7.5 MINUTE SERIES (TOPOGRAPHIC)



Mapped by the Army Map Service  
Edited and published by the Geological Survey  
Control by USGS, USC&GS, USCE, and New Jersey Geodetic Survey  
Topography from aerial photographs by photogrammetric methods  
Field check 1943. Culture revised by the Geological Survey 1956  
Polyconic projection. 1927 North American datum  
10,000-foot grid based on New Jersey coordinate system  
and Pennsylvania coordinate system, south zone  
1000-meter Universal Transverse Mercator grid ticks,  
zone 18, shown in blue

Red tint indicates areas in which only landmark buildings are shown  
Revisions shown in purple compiled by Geological Survey in  
cooperation with State of Pennsylvania agencies, from aerial  
photographs taken 1968. This information not field checked  
Purple tint indicates extension of urban areas



THIS MAP COMPLIES WITH NATIONAL MAP ACCURACY STANDARDS  
FOR SALE BY U. S. GEOLOGICAL SURVEY, WASHINGTON, D. C. 20242  
A FOLDER DESCRIBING TOPOGRAPHIC MAPS AND SYMBOLS IS AVAILABLE ON REQUEST

ROAD CLASSIFICATION  
Heavy-duty ——— Light-duty ———  
Medium-duty ——— Unimproved dirt ———  
Interstate Route U. S. Route State Route



U.S.G.S.  
FILE COPY  
TOPOGRAPHIC DIVISION

EASTON, N. J.-PA.  
N4037.5-W7507.5/7.5  
1956  
PHOTOREVISED 1968  
AMS 5965 II NW-SERIES V822

USGS  
Historical File  
Topographic Division

5355  
AUG 26 1968