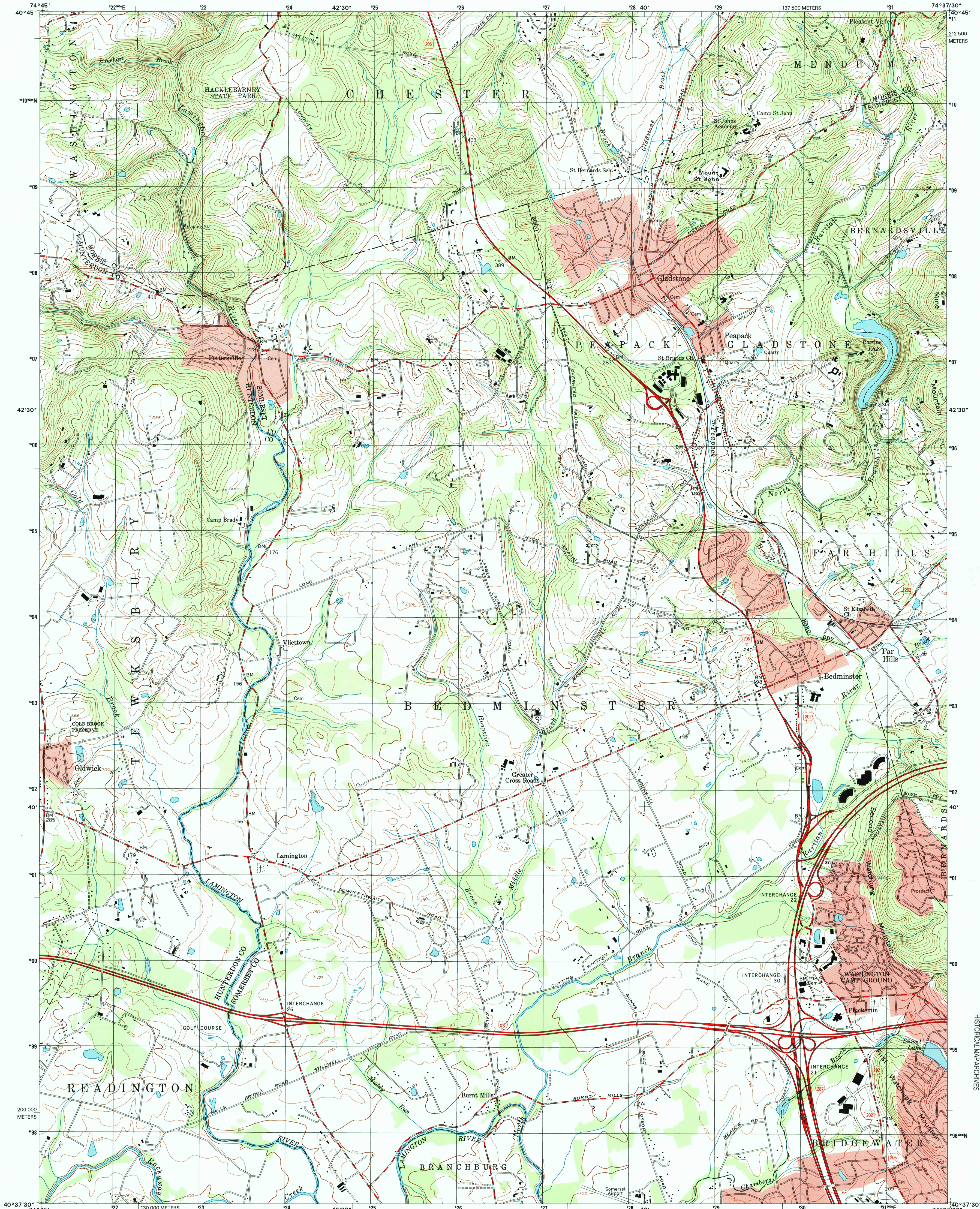


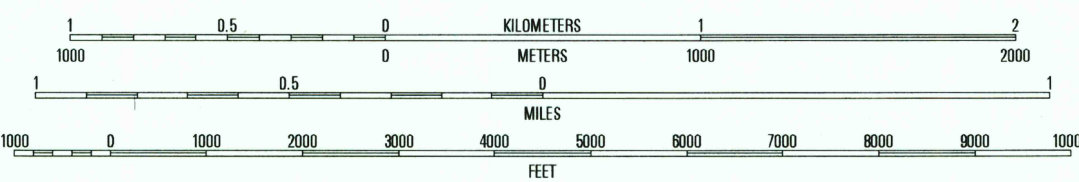
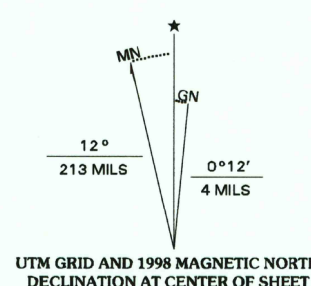
UNITED STATES
DEPARTMENT OF THE INTERIOR
GEOLOGICAL SURVEY

GLADSTONE QUADRANGLE
NEW JERSEY
7.5-MINUTE SERIES (TOPOGRAPHIC)



RECEIVED
DEC 3 1 1998
USGS NMD
HISTORICAL MAP ARCHIVES

Produced by the United States Geological Survey
Topography compiled 1942. Planimetry derived from imagery
taken 1995. Survey control current as of 1942.
North American Datum of 1983 (NAD 83). Projection and
1 000-meter grid: Universal Transverse Mercator, zone 18
2 500-meter ticks: New Jersey Coordinate System of 1983
North American Datum of 1927 (NAD 27) is shown by dashed
corner ticks. The values of the shift between NAD 83 and
NAD 27 for 7.5-minute intersections are obtainable from
National Geodetic Survey NADCON software.
There may be private inholdings within the boundaries of the
National or State reservations shown on this map.
Landmark buildings verified 1942.



CONTOUR INTERVAL 20 FEET
NATIONAL GEODETIC VERTICAL DATUM OF 1929
TO CONVERT FROM FEET TO METERS, MULTIPLY BY 0.3048



QUADRANGLE LOCATION

ROAD CLASSIFICATION
Primary highway hard surface
Secondary highway hard surface
Light-duty road, hard or improved surface
Unimproved road
Interstate Route
U.S. Route
State Route

1	2	3
4	5	6
7	8	

1 Hackettstown
2 Chester
3 Mendham
4 Callee
5 Bernardsville
6 Flemington
7 Raritan
8 Bound Brook

GLADSTONE, NJ
1995

FOR SALE BY U.S. GEOLOGICAL SURVEY, P.O. BOX 25286, DENVER, COLORADO 80225
A FOLDER DESCRIBING TOPOGRAPHIC MAPS AND SYMBOLS IS AVAILABLE ON REQUEST

NIMA 6065 II NW-SERIES V822

