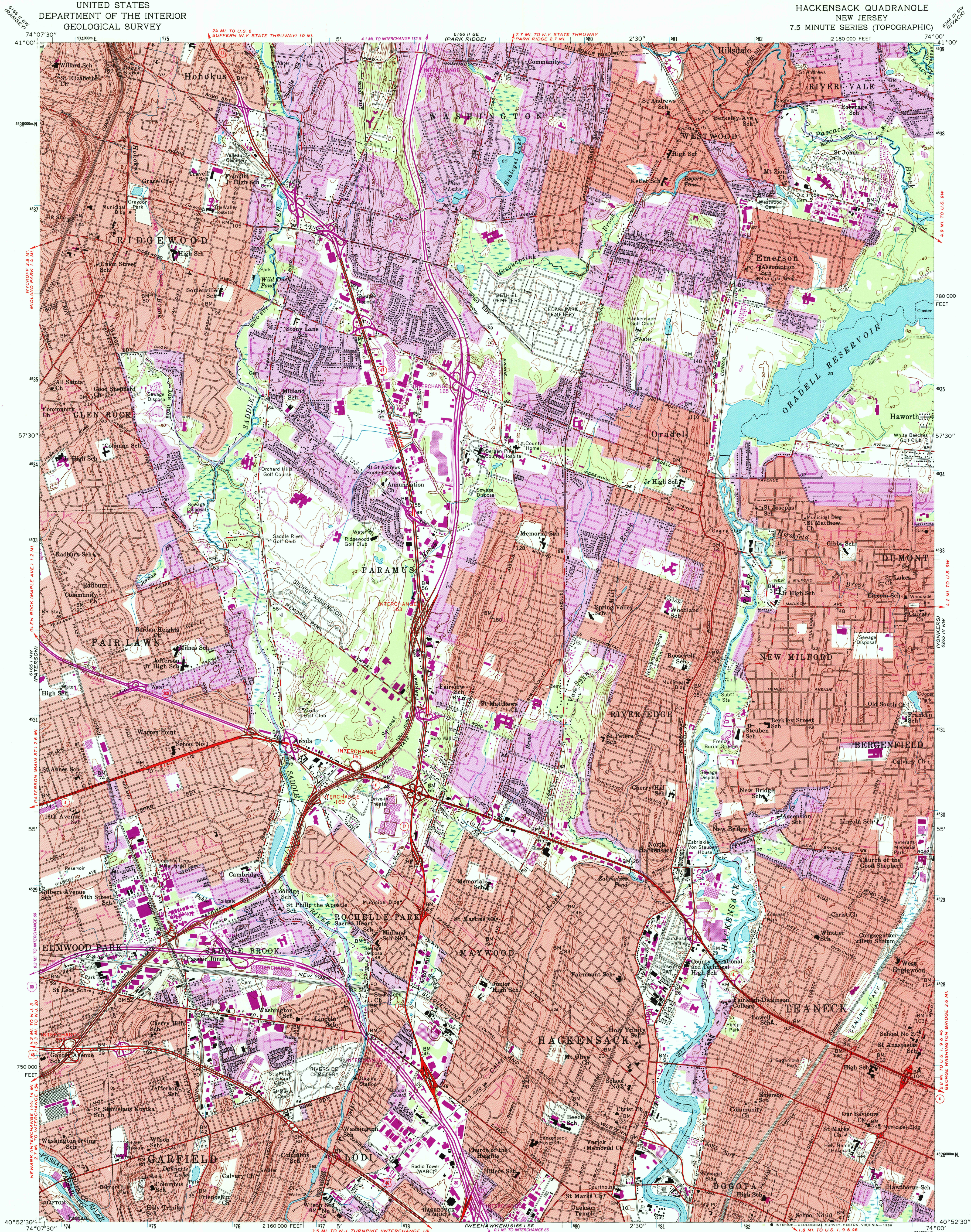
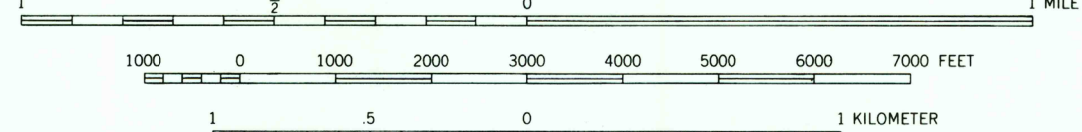
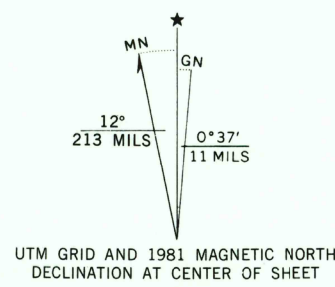


UNITED STATES
DEPARTMENT OF THE INTERIOR
GEOLOGICAL SURVEY

HACKENSACK QUADRANGLE
NEW JERSEY
7.5 MINUTE SERIES (TOPOGRAPHIC)



Mapped, edited, and published by the Geological Survey
Control by USGS, NOS/NOAA, and New Jersey Geodetic Survey
Topography by planetable surveys 1934. Revised 1955
Hydrography compiled from NOS chart 287 (1954)
This information is not intended for navigational purposes
Polyconic projection. 10,000-foot grid ticks based on New Jersey
coordinate system. 1000-meter Universal Transverse Mercator grid
ticks, zone 18, shown in blue. 1927 North American Datum
To place on the predicted North American Datum 1983
move the projection lines 6 meters south and 35 meters
west as shown by dashed corner ticks
Red tint indicates areas in which only landmark buildings are shown



CONTOUR INTERVAL 10 FEET
NATIONAL GEODETIC VERTICAL DATUM OF 1929
SOUNDINGS IN FEET—DATUM IS MEAN LOW WATER
THE RELATIONSHIP BETWEEN THE TWO DATUMS IS VARIABLE
SHORELINE SHOWN REPRESENTS THE APPROXIMATE LINE OF MEAN HIGH WATER
THE MEAN RANGE OF TIDE IS APPROXIMATELY 5.3 FEET

THIS MAP COMPLIES WITH NATIONAL MAP ACCURACY STANDARDS
FOR SALE BY U.S. GEOLOGICAL SURVEY, RESTON, VIRGINIA 22092
A FOLDER DESCRIBING TOPOGRAPHIC MAPS AND SYMBOLS IS AVAILABLE ON REQUEST



QUADRANGLE LOCATION

Revisions shown in purple compiled from aerial photographs
taken 1976 and other sources. This information not
field checked. Map edited 1981
Purple tint indicates extension of urban areas

ROAD CLASSIFICATION	
Heavy-duty	Light-duty
Medium-duty	Unimproved dirt
U.S. Route	State Route
Interstate Route	

HACKENSACK, N. J.
40074-H1-TF-024

1955
PHOTOREVISED 1981
DMA 6165 1 NE—SERIES Y822

USGS NMD HISTORICAL MAP
AUG 20 1986
REC'D FILE COPY