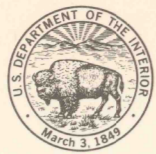


589 1/2 E (EASTWATER)

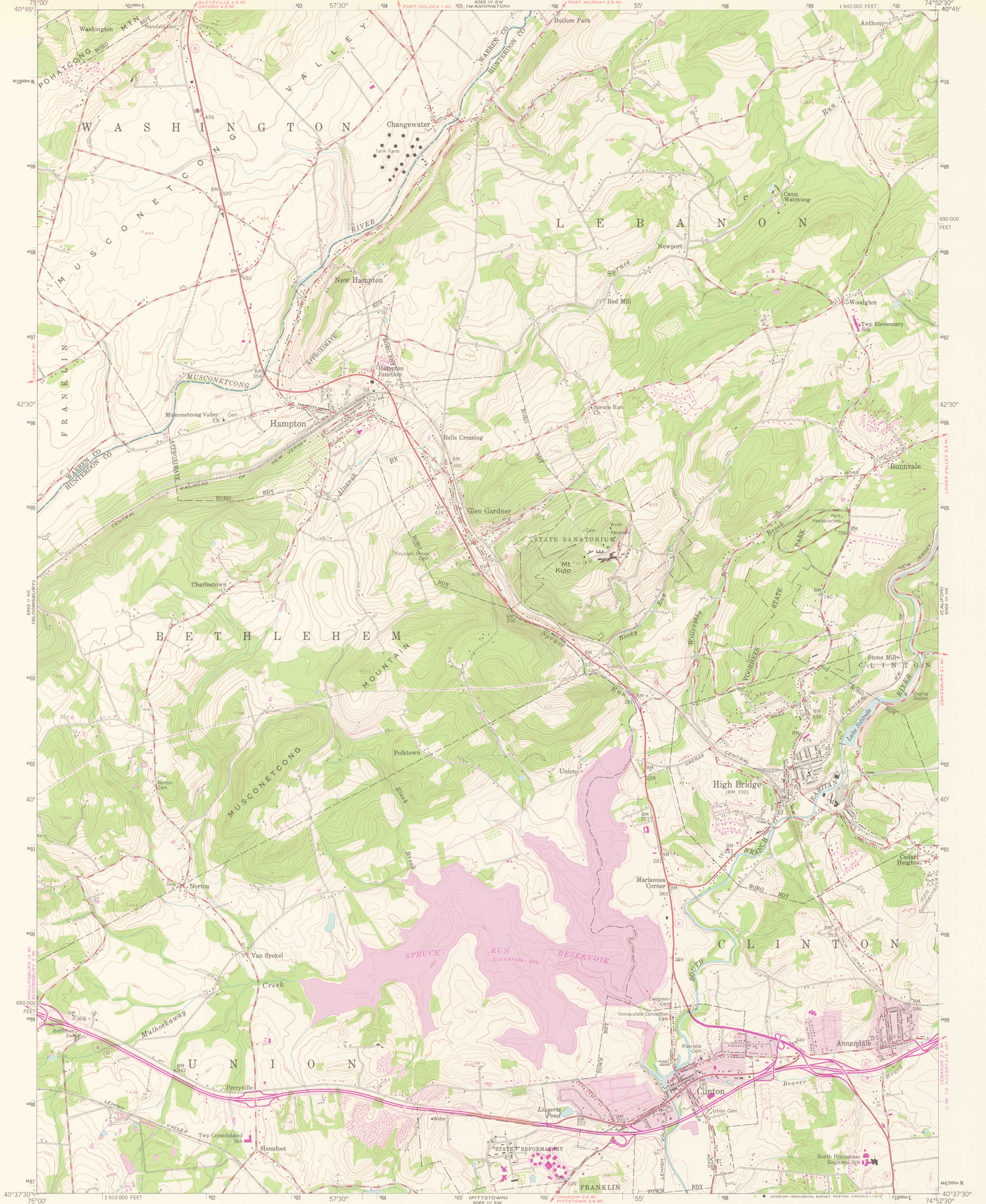
UNITED STATES DEPARTMENT OF THE INTERIOR GEOLOGICAL SURVEY



UNITED STATES DEPARTMENT OF THE ARMY CORPS OF ENGINEERS

HIGH BRIDGE QUADRANGLE NEW JERSEY 7.5 MINUTE SERIES (TOPOGRAPHIC)

589 1/2 E (EASTWATER) 606 1/2 SE (MACKETTSTOWN)



Mapped by the Army Map Service Edited and published by the Geological Survey

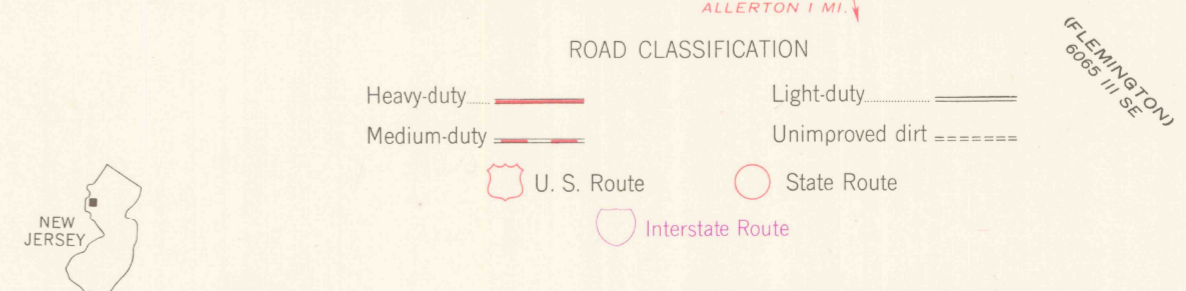
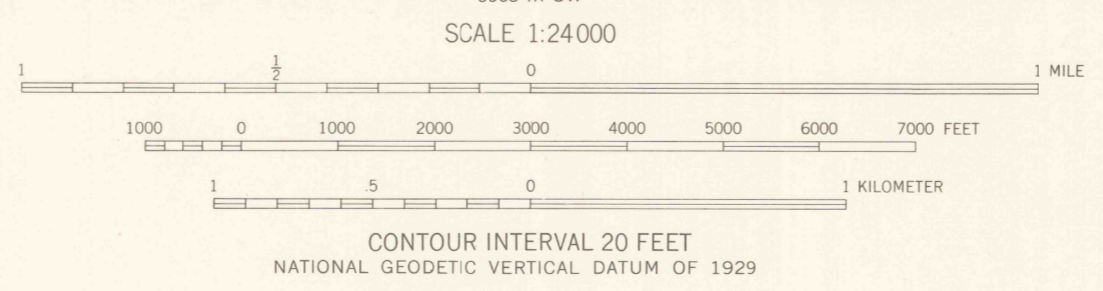
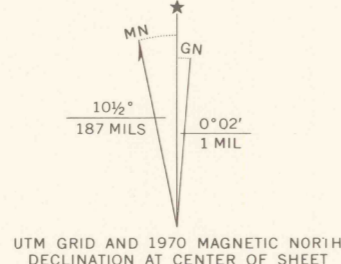
Control by US&GS, USSCS, and New Jersey Geodetic Survey

Topography from aerial photographs by photogrammetric methods. Aerial photographs taken 1942. Field check 1942. Culture revised by the Geological Survey 1954

Polyconic projection. 1927 North American datum 10,000-foot grid based on New Jersey coordinate system 1000-meter Universal Transverse Mercator grid ticks, zone 18, shown in blue

To place on the predicted North American Datum 1983 move the projection lines 6 meters south and 32 meters west as shown by dashed corner ticks

There may be private inholdings within the boundaries of the National or State reservations shown on this map



THIS MAP COMPLIES WITH NATIONAL MAP ACCURACY STANDARDS FOR SALE BY U. S. GEOLOGICAL SURVEY, RESTON, VIRGINIA 22092 A FOLDER DESCRIBING TOPOGRAPHIC MAPS AND SYMBOLS IS AVAILABLE ON REQUEST

Revisions shown in purple compiled by the Geological Survey from aerial photographs taken 1970. This information not field checked. Purple tint indicates extension of urban areas

HIGH BRIDGE, N. J. N4037.5-W7452.5/7.5 1954 PHOTOREVISED 1970 AMS 6065 III NW-SERIES V822