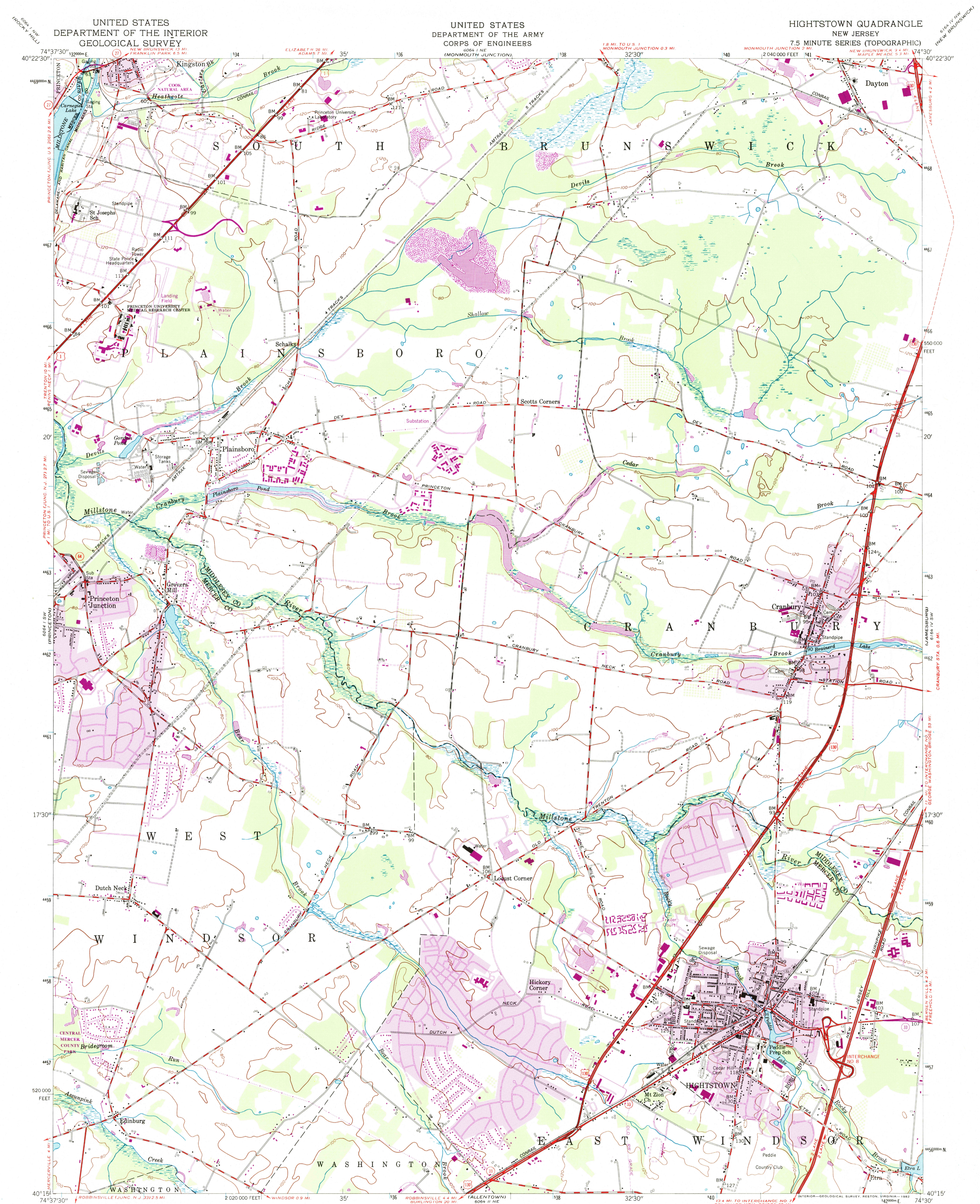


UNITED STATES
DEPARTMENT OF THE INTERIOR
GEOLOGICAL SURVEY

UNITED STATES
DEPARTMENT OF THE ARMY
CORPS OF ENGINEERS

HIGHTSTOWN QUADRANGLE
NEW JERSEY
7.5 MINUTE SERIES (TOPOGRAPHIC)



Maped by the Defense Mapping Agency
Edited and published by the Geological Survey
Control by NOS/NOAA, USGS, and New Jersey Geodetic Survey
Topography by photogrammetric methods from aerial photographs
taken 1942 and 1953. Field checked 1943. Culture revised
by the Geological Survey 1954
Polyconic projection. 10,000-foot grid ticks based on New Jersey
coordinate system. 1000-meter Universal Transverse Mercator
grid ticks, zone 18, shown in blue. 1927 North American
Datum. To place on the predicted North American Datum
1983 move the projection lines 6 meters south and
33 meters west as shown by dashed corner ticks
There may be private inholdings within the boundaries of the
National or State reservations shown on this map

Revisions shown in purple compiled by the Geological Survey
from aerial photographs taken 1976 and other sources
This information not field checked. Map edited 1981
Purple tint indicates extension of urban areas

FOR SALE BY U. S. GEOLOGICAL SURVEY, RESTON, VIRGINIA 22092
A FOLDER DESCRIBING TOPOGRAPHIC MAPS AND SYMBOLS IS AVAILABLE ON REQUEST

ROAD CLASSIFICATION
Heavy-duty ——— Light-duty ———
Medium-duty ——— Unimproved dirt ———
U. S. Route ——— State Route ———

RECEIVED
MAR 31 1999

USGS/NM
HISTORICAL MAP ARCHIVES

HIGHTSTOWN, N. J.
N4015-W7430/7.5

1954
PHOTO REVISITED 1981
DMA 6064 I SE-SERIES V822

