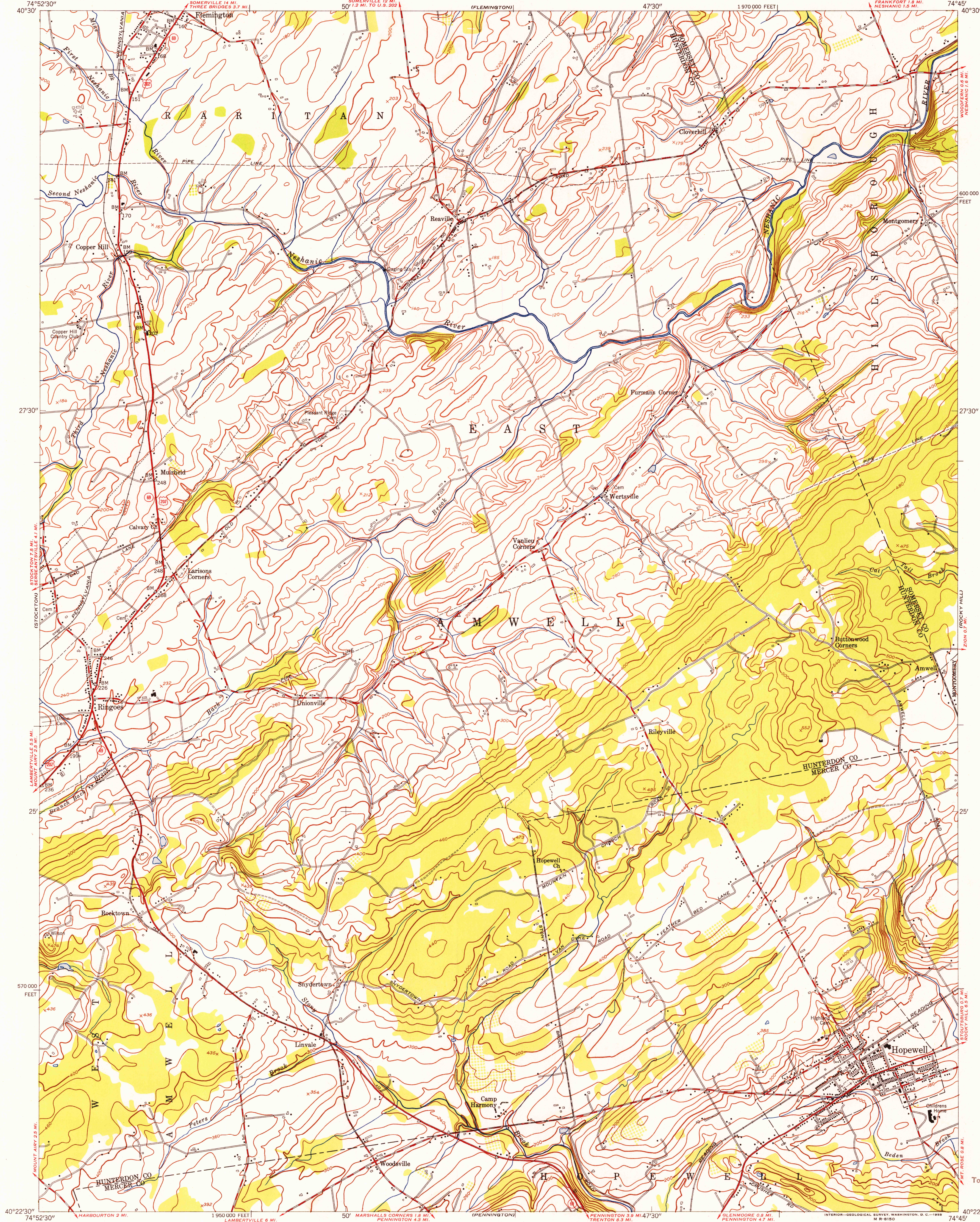


U.S.G.S.
FILE COPY
TOPOGRAPHIC DIVISION



Mapped by the Army Map Service
Edited and published by the Geological Survey

Control by USC&GS and New Jersey Geodetic Survey
Topography from aerial photographs by stereophotogrammetric
methods. Aerial photographs taken 1942
Culture revised by the Geological Survey 1954

Polyconic projection. 1927 North American datum
10,000-foot grid based on New Jersey coordinate system
Unchecked elevations are shown in brown

10°
TRUE NORTH
MAGNETIC NORTH
APPROXIMATE MEAN
DECLINATION, 1954

SCALE 1:24,000
1 0 1000 2000 3000 4000 5000 6000 7000 FEET
1 5 0 5 10 KILOMETER

CONTOUR INTERVAL 20 FEET
DATUM IS MEAN SEA LEVEL

THIS MAP COMPLIES WITH NATIONAL MAP ACCURACY STANDARDS
FOR SALE BY U. S. GEOLOGICAL SURVEY, WASHINGTON 25, D. C.
A FOLDER DESCRIBING TOPOGRAPHIC MAPS AND SYMBOLS IS AVAILABLE ON REQUEST



ROAD CLASSIFICATION
Heavy-duty ——— Light-duty ———
Medium-duty ——— Unimproved dirt ———
U. S. Route ——— State Route ———

HOPEWELL, N. J.
NE/4 LAMBERTVILLE 15' QUADRANGLE
N4022.5-W7445/7.5

1954

U.S.G.S.
FILE COPY
TOPOGRAPHIC DIVISION

NOV 8 1955
2155