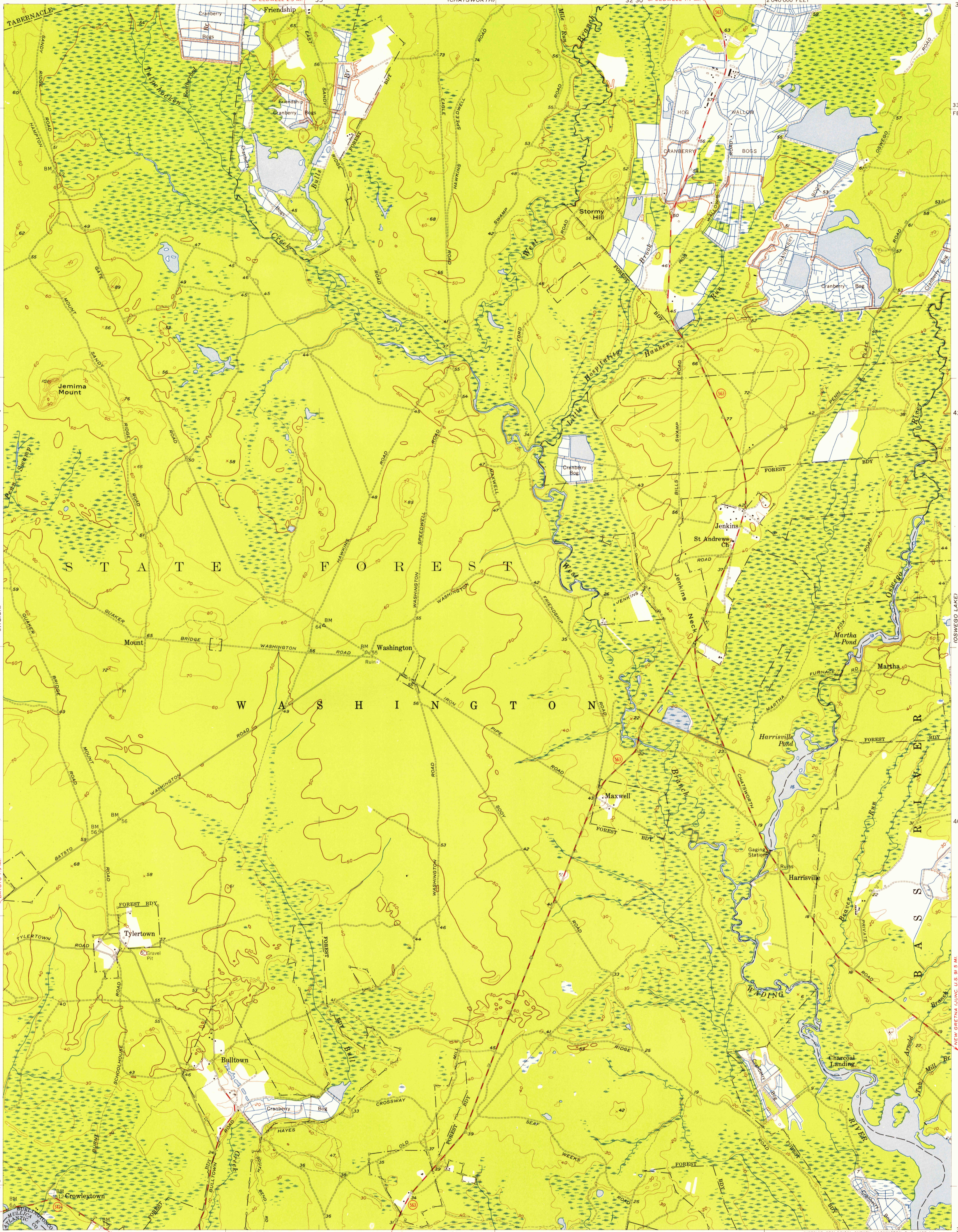
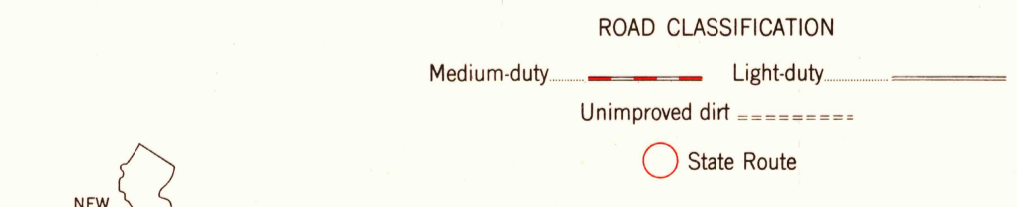
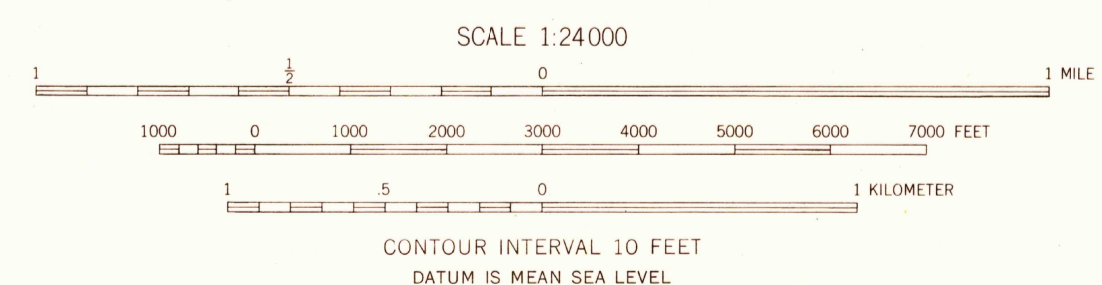
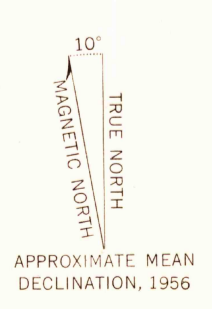


74°37'30" 39°45' 204000 FEET 74°30' 39°45'



Mapped, edited, and published by the Geological Survey
Control by USGS, USC&GS, USCE, and New Jersey Geodetic Survey
Culture and drainage in part compiled from aerial photographs taken 1951. Topography by planetable surveys 1955 and 1956
Polyconic projection. 1927 North American datum
10,000-foot grid based on New Jersey coordinate system



JENKINS, N. J.
NE/4 EGG HARBOR 15' QUADRANGLE
N3937.5-W7430/7.5

1956

THIS MAP COMPLIES WITH NATIONAL MAP ACCURACY STANDARDS
FOR SALE BY U. S. GEOLOGICAL SURVEY, WASHINGTON 25, D. C.
A FOLDER DESCRIBING TOPOGRAPHIC MAPS AND SYMBOLS IS AVAILABLE ON REQUEST

U.S.G.S.
FILE COPY
TOPOGRAPHIC DIVISION

U.S.G.S.
FILE COPY
TOPOGRAPHIC DIVISION

USGS
Historical File
Topographic Division

JUL 19 1957

3170