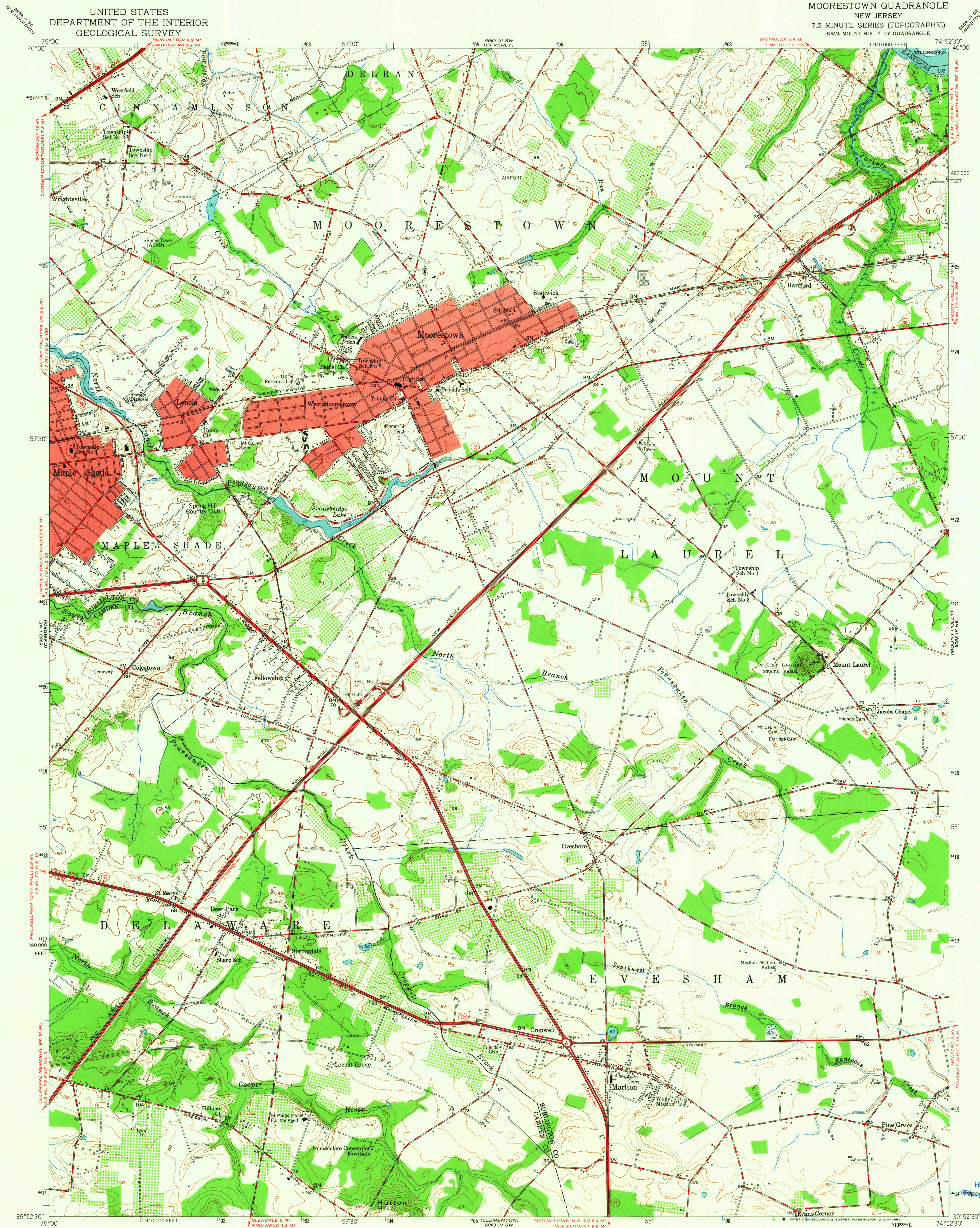
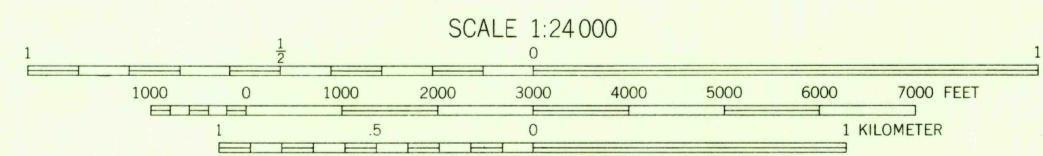
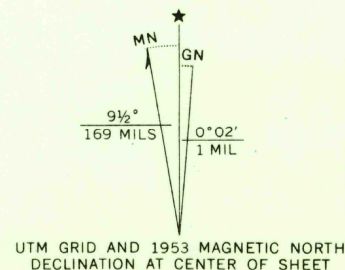


UNITED STATES  
DEPARTMENT OF THE INTERIOR  
GEOLOGICAL SURVEY

MOORESTOWN QUADRANGLE  
NEW JERSEY  
7.5 MINUTE SERIES (TOPOGRAPHIC)  
NW/4 MOUNT HOLLY 15' QUADRANGLE



Mapped, edited, and published by the Geological Survey  
Control by USC&GS and New Jersey Geodetic Survey  
Culture and drainage in part compiled from aerial photographs  
taken 1951. Topography from plane-table surveys 1953  
Polyconic projection. 1927 North American datum  
10,000-foot grid based on New Jersey coordinate system  
Red tint indicates areas in which only  
landmark buildings are shown  
1000-meter Universal Transverse Mercator grid ticks,  
zone 18, shown in blue



CONTOUR INTERVAL 10 FEET  
DATUM IS MEAN SEA LEVEL

THIS MAP COMPLIES WITH NATIONAL MAP ACCURACY STANDARDS  
FOR SALE BY U. S. GEOLOGICAL SURVEY, WASHINGTON 25, D. C.  
A FOLDER DESCRIBING TOPOGRAPHIC MAPS AND SYMBOLS IS AVAILABLE ON REQUEST

ROAD CLASSIFICATION  
Heavy-duty 4 LANE 6 LANE Light-duty  
Medium-duty 4 LANE 6 LANE Unimproved dirt  
U. S. Route State Route

MOORESTOWN, N. J.  
NW/4 MOUNT HOLLY 15' QUADRANGLE  
N 3952 5-W 7452 5/7.5

1953

AMS 6063 IV NW-SERIES V822

U.S.G.S.  
TOPOGRAPHIC DIVISION

JAN 1 5 1965  
4240