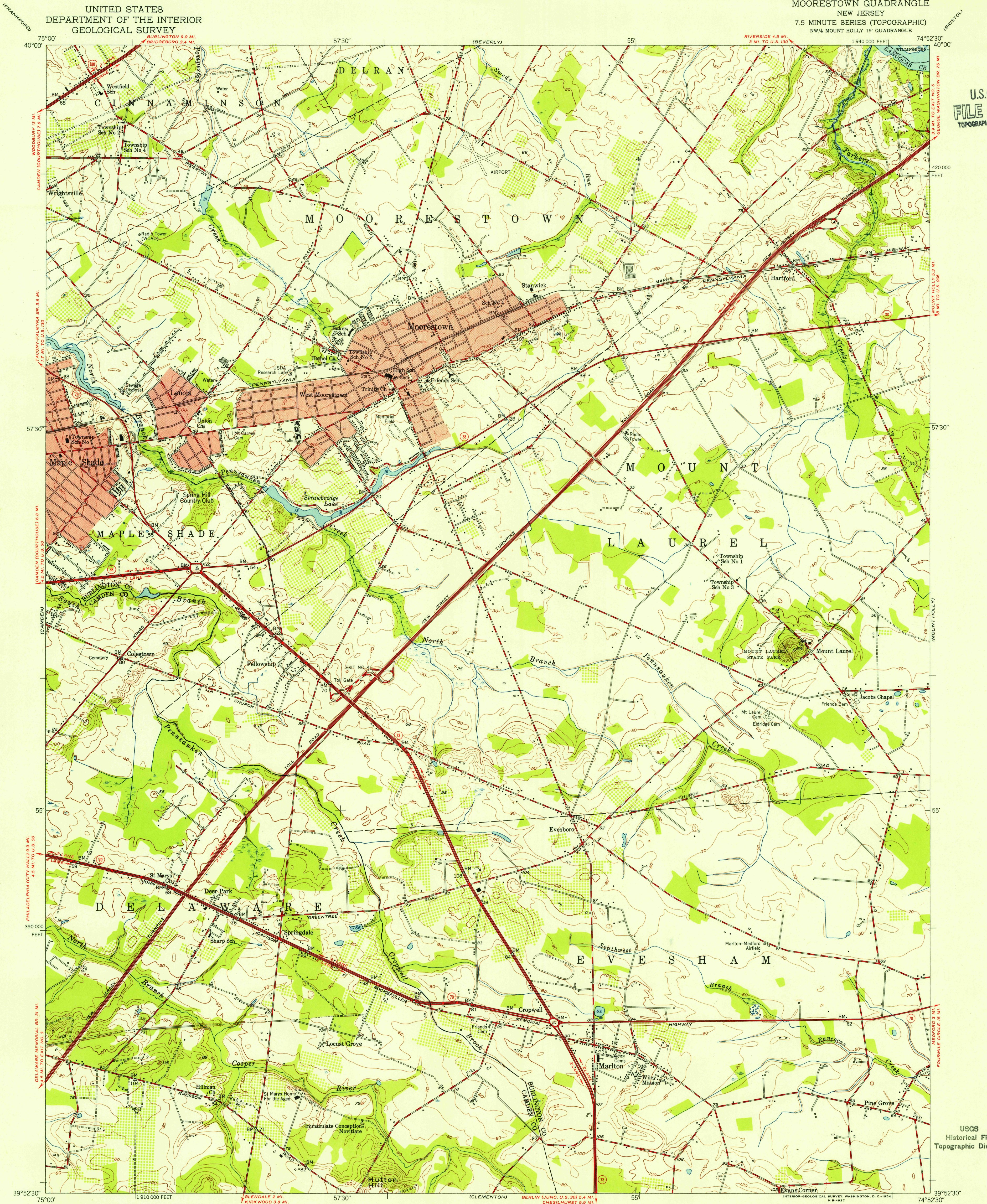


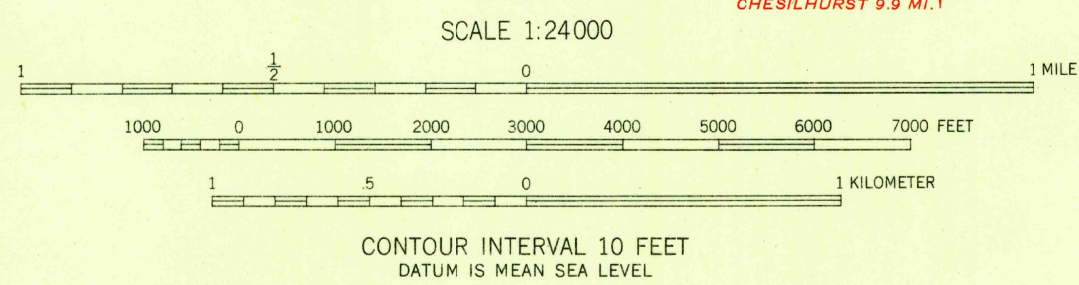
UNITED STATES
DEPARTMENT OF THE INTERIOR
GEOLOGICAL SURVEY

MOORESTOWN QUADRANGLE
NEW JERSEY
7.5 MINUTE SERIES (TOPOGRAPHIC)
NW/4 MOUNT HOLLY 15' QUADRANGLE

U.S.G.S.
FILE COPY
TOPOGRAPHIC DIVISION



Mapped, edited, and published by the Geological Survey
Control by USC&GS and New Jersey Geodetic Survey
Culture and drainage in part compiled from aerial photographs
taken 1951. Topography from plane-table surveys 1953
Polyconic projection. 1927 North American datum
10,000-foot grid based on New Jersey coordinate system
Red tint indicates areas in which only
landmark buildings are shown



ROAD CLASSIFICATION
Heavy-duty ——— + LANE 6 LANE Light-duty ———
Med-um-duty ——— + LANE 6 LANE Unimproved dirt ———
U. S. Route ——— State Route ———

MOORESTOWN, N. J.
NW/4 MOUNT HOLLY 15' QUADRANGLE
N 3952.5—W 7452.5/7.5

1953

U.S.G.S.
FILE COPY
TOPOGRAPHIC DIVISION
OCT 13 1954

THIS MAP COMPLIES WITH NATIONAL MAP ACCURACY STANDARDS
FOR SALE BY U. S. GEOLOGICAL SURVEY, WASHINGTON 25, D. C.
A FOLDER DESCRIBING TOPOGRAPHIC MAPS AND SYMBOLS IS AVAILABLE ON REQUEST

4185