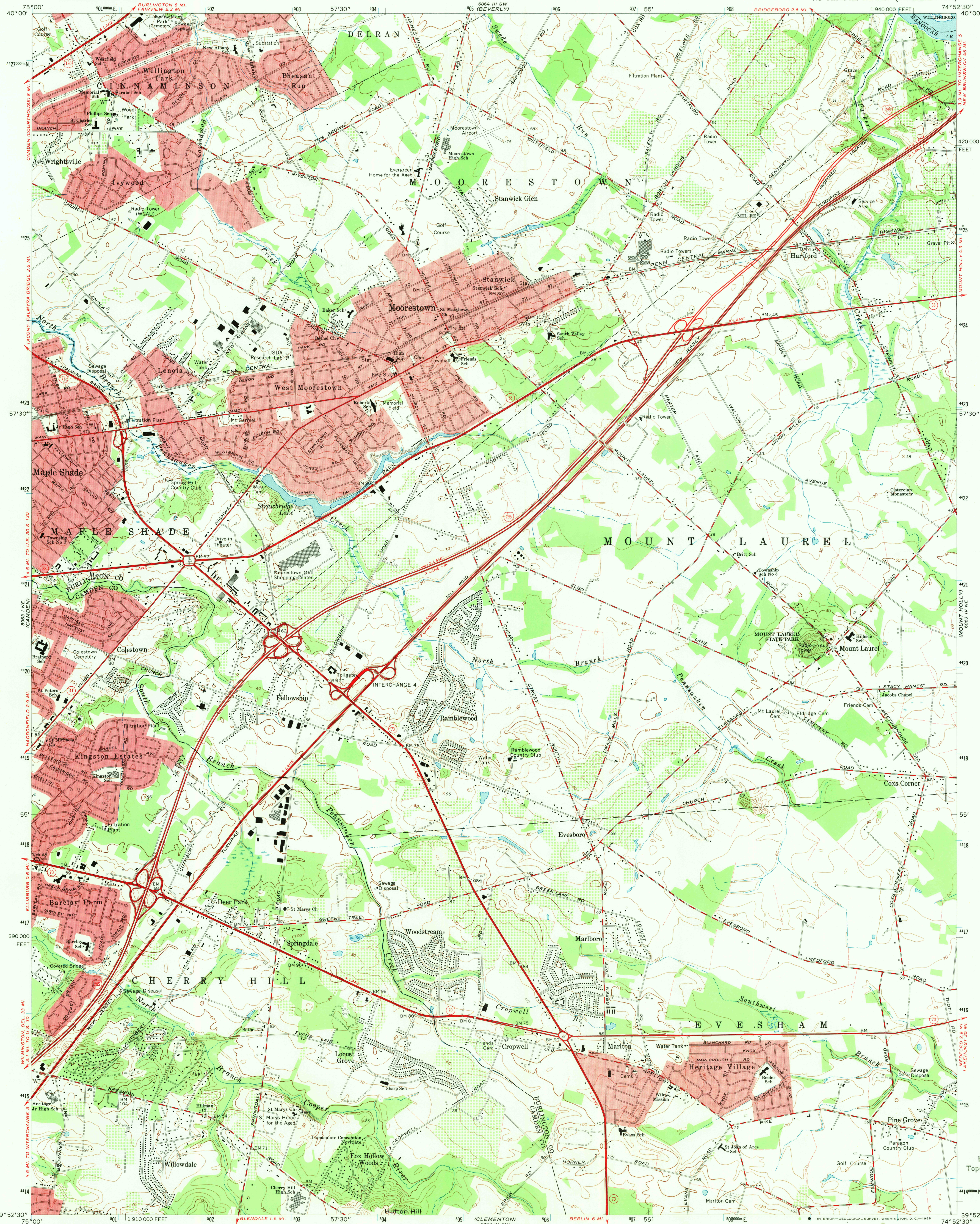
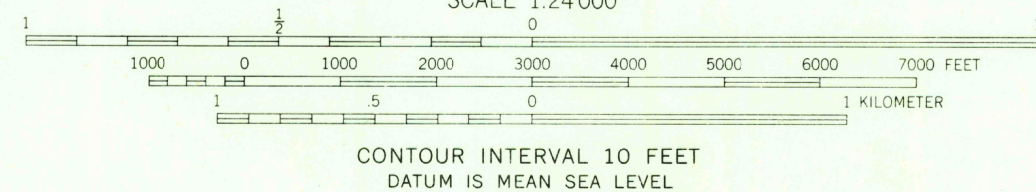
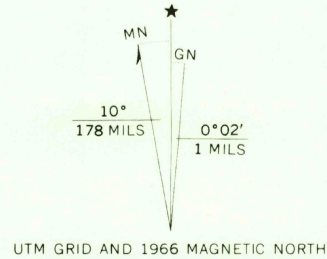


UNITED STATES
DEPARTMENT OF THE INTERIOR
GEOLOGICAL SURVEY

MOORESTOWN QUADRANGLE
NEW JERSEY
7.5 MINUTE SERIES (TOPOGRAPHIC)



Mapped, edited, and published by the Geological Survey
Control by USGS, USCGS, and New Jersey Geodetic Survey
Planimetry by photogrammetric methods from aerial photographs
taken 1951. Topography by planetable surveys 1953. Revised 1966
Polyconic projection. 1927 North American datum
10,000-foot grid based on New Jersey coordinate system
1000-meter Universal Transverse Mercator grid ticks,
zone 18, shown in blue
Red tint indicates areas in which only landmark buildings are shown
Fine red dashed lines indicate selected fence and field lines where
generally visible on aerial photographs. This information is unchecked



THIS MAP COMPLIES WITH NATIONAL MAP ACCURACY STANDARDS
FOR SALE BY U. S. GEOLOGICAL SURVEY, WASHINGTON, D. C. 20242
A FOLDER DESCRIBING TOPOGRAPHIC MAPS AND SYMBOLS IS AVAILABLE ON REQUEST

ROAD CLASSIFICATION
Heavy-duty ——— Light-duty ———
Medium-duty ——— Unimproved dirt ———
Interstate Route U. S. Route State Route



U.S.G.S.
FILE COPY
TOPOGRAPHIC DIVISION

MOORESTOWN, N. J.
N3952.5-W7452.5/7.5

1966
AMS 6063 IV NW—SERIES V822

USGS
Historical File
Topographic Division

DEC 17 1968