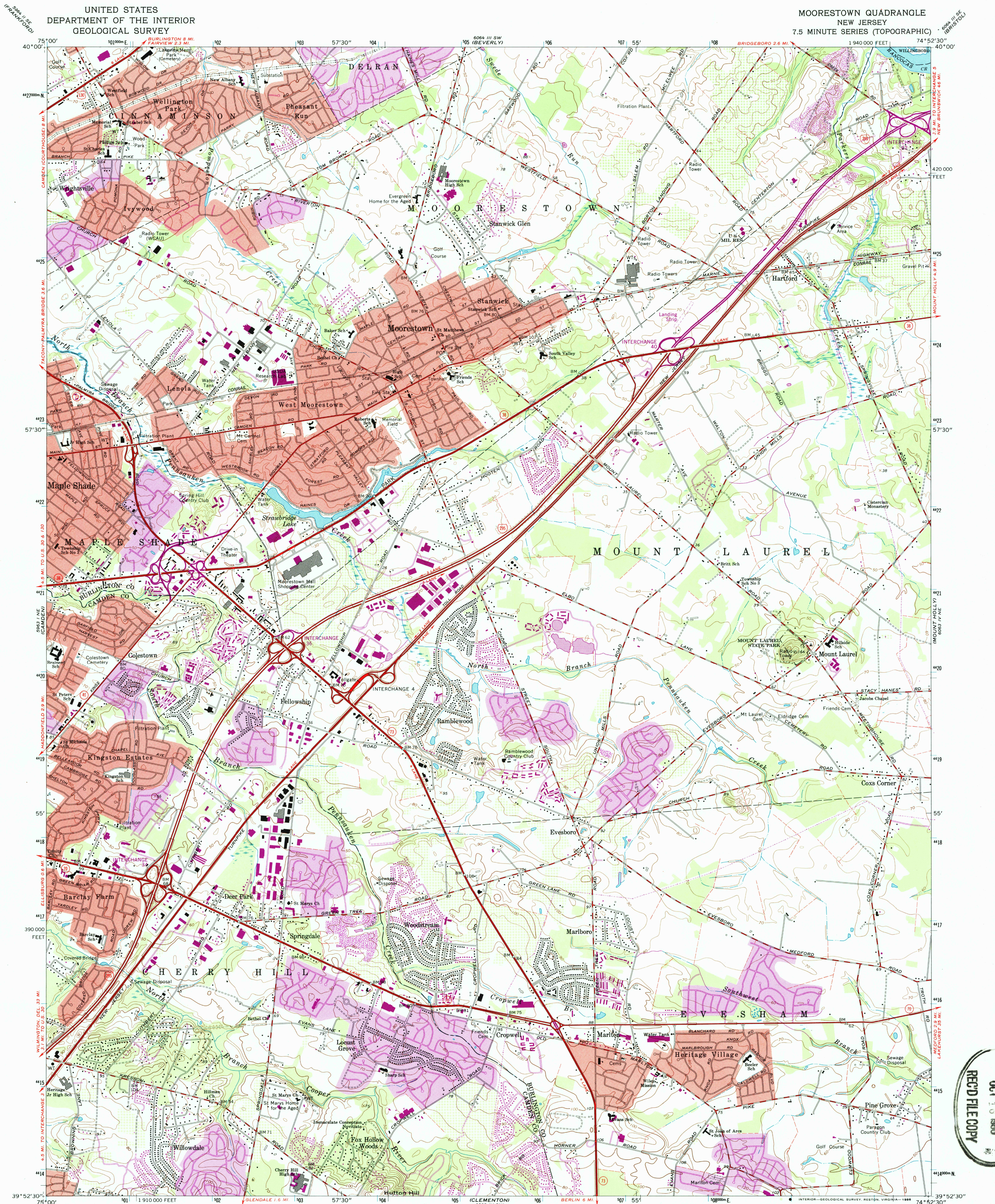
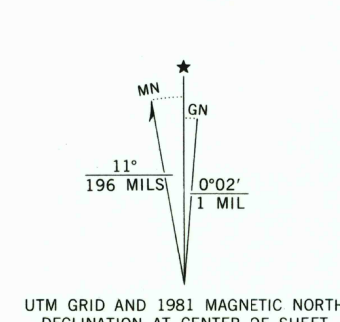


UNITED STATES
DEPARTMENT OF THE INTERIOR
GEOLOGICAL SURVEY

MOORESTOWN QUADRANGLE
NEW JERSEY
7.5 MINUTE SERIES (TOPOGRAPHIC)



Mapped, edited, and published by the Geological Survey
Control by USGS, NOS/NOAA, and New Jersey Geodetic Survey
Planimetry by photogrammetric methods from aerial photographs
taken 1951. Topography by planimetry surveys 1953. Revised 1966
Polyconic projection. 10,000-foot grid ticks based on New Jersey
coordinate system. 1000-meter Universal Transverse Mercator
grid ticks, zone 18, shown in blue. 1927 North American
Datum. To place on the predicted North American Datum
1983 move the projection lines 6 meters south and 32
meters west as shown by dashed corner ticks
Red tint indicates areas in which only landmark buildings are shown
Fine red dashed lines indicate selected fence and field lines where
generally visible on aerial photographs. This information is unchecked
There may be private inholdings within the boundaries of
the National or State reservations shown on this map



SCALE 1:24,000
CONTOUR INTERVAL 10 FEET
NATIONAL GEODETIC VERTICAL DATUM OF 1929

THIS MAP COMPLIES WITH NATIONAL MAP ACCURACY STANDARDS
FOR SALE BY U.S. GEOLOGICAL SURVEY, RESTON, VIRGINIA 22092
A FOLDER DESCRIBING TOPOGRAPHIC MAPS AND SYMBOLS IS AVAILABLE ON REQUEST

Revisions shown in purple compiled from aerial photographs
taken 1975 and other sources. This information not
field checked. Map edited 1981
Purple tint indicates extension of urban areas

ROAD CLASSIFICATION
Heavy-duty ——— Light-duty ———
Medium-duty ——— Unimproved dirt ———
Interstate Route U.S. Route State Route

MOORESTOWN, N. J.
39074-H8-TF-024
1966
PHOTOREVISED 1981
DMA 6063 IV NW-SERIES V822

