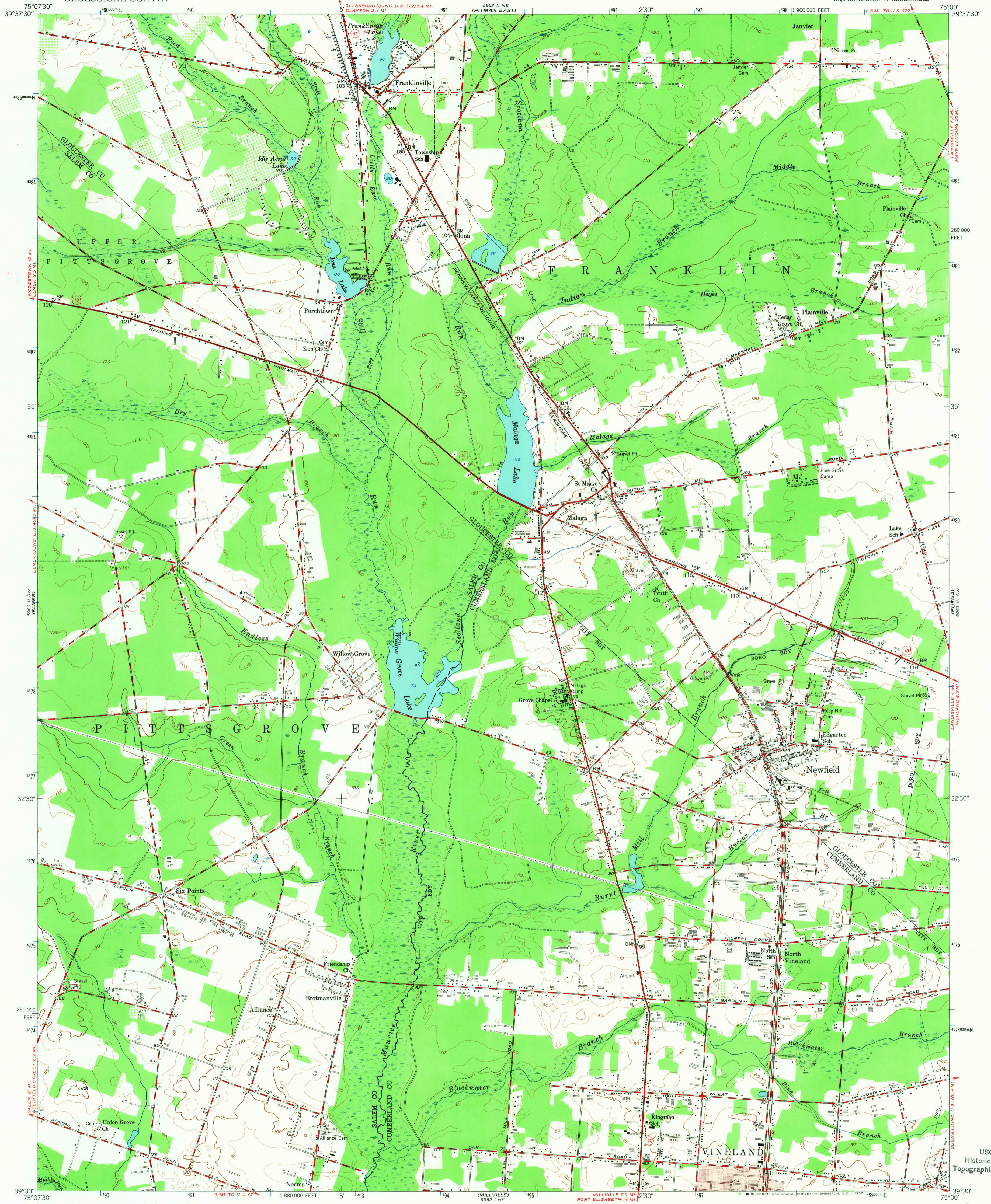


UNITED STATES
DEPARTMENT OF THE INTERIOR
GEOLOGICAL SURVEY

NEWFIELD QUADRANGLE
NEW JERSEY
7.5 MINUTE SERIES (TOPOGRAPHIC)
SE/4 GLASSBORO 15' QUADRANGLE



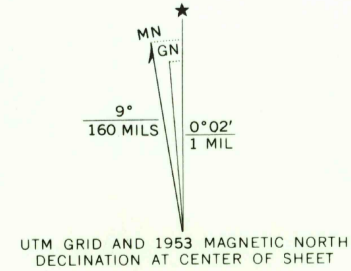
Mapped, edited, and published by the Geological Survey

Control by USC&GS and New Jersey Geodetic Survey
Culture and drainage in part compiled from aerial photographs
taken 1951. Topography by plane-table surveys 1953

Polyconic projection. 1927 North American datum
10,000-foot grid based on New Jersey coordinate system

Red tint indicates area in which only
landmark buildings are shown

1000-meter Universal Transverse Mercator grid ticks,
zone 18, shown in blue



CONTOUR INTERVAL 10 FEET
DATUM IS MEAN SEA LEVEL

ROAD CLASSIFICATION	
Heavy-duty	4 LANE 16 LANE Light-duty
Medium-duty	2 LANE 6 LANE Unimproved dirt
U. S. Route	State Route



U.S.G.S.

TOPOGRAPHIC DIVISION

NEWFIELD, N. J.
SE/4 GLASSBORO 15' QUADRANGLE
N 3930-W 7500/7.5

1953
AMS 5963 II SE-SERIES V822

THIS MAP COMPLIES WITH NATIONAL MAP ACCURACY STANDARDS
FOR SALE BY U. S. GEOLOGICAL SURVEY, WASHINGTON, D. C. 20242
A FOLDER DESCRIBING TOPOGRAPHIC MAPS AND SYMBOLS IS AVAILABLE ON REQUEST

USCS
Historical File
Topographic Division

2695
FEB 1 1957