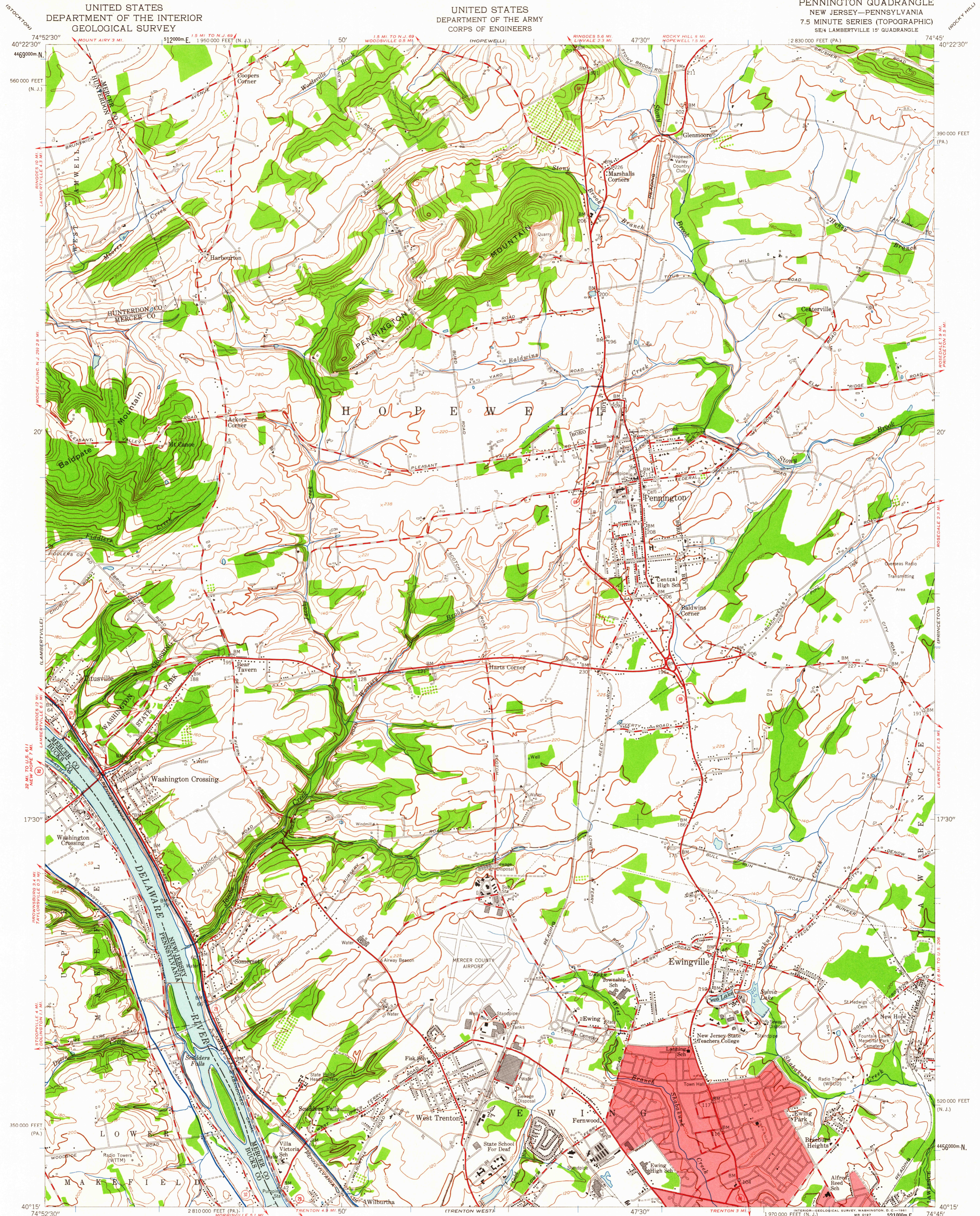


UNITED STATES
DEPARTMENT OF THE INTERIOR
GEOLOGICAL SURVEY

UNITED STATES
DEPARTMENT OF THE ARMY
CORPS OF ENGINEERS

PENNINGTON QUADRANGLE
NEW JERSEY-PENNSYLVANIA
7.5 MINUTE SERIES (TOPOGRAPHIC)
SE/4 LAMBERTVILLE 15' QUADRANGLE



Map by the Army Map Service
Edited and published by the Geological Survey

Control by USC&GS and New Jersey Geodetic Survey

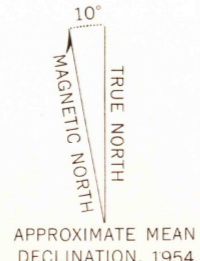
Topography from aerial photographs by stereophotogrammetric methods. Aerial photographs taken 1942
Culture revised by the Geological Survey 1954

Polyconic projection. 1927 North American datum
10,000-foot grids based on New Jersey coordinate system, and Pennsylvania coordinate system, south zone

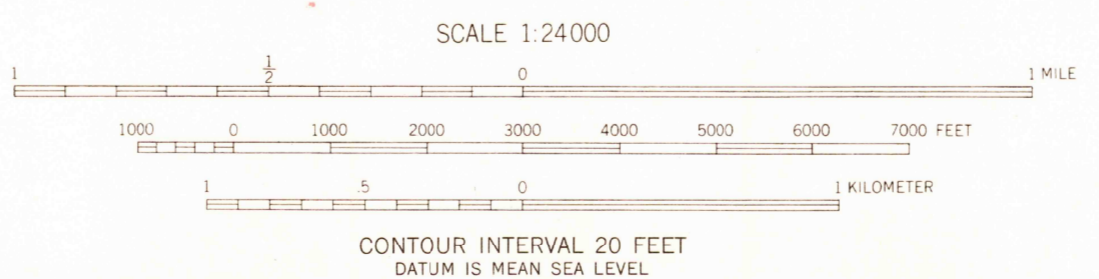
Red tint indicates areas in which only
landmark buildings are shown

Unchecked elevations are shown in brown

1000-meter Universal Transverse Mercator grid ticks,
zone 18, shown in blue



APPROXIMATE MEAN
DECLINATION, 1954



SCALE 1:24000

CONTOUR INTERVAL 20 FEET
DATUM IS MEAN SEA LEVEL

THIS MAP COMPLIES WITH NATIONAL MAP ACCURACY STANDARDS
FOR SALE BY U. S. GEOLOGICAL SURVEY, WASHINGTON 25, D. C.
A FOLDER DESCRIBING TOPOGRAPHIC MAPS AND SYMBOLS IS AVAILABLE ON REQUEST

ROAD CLASSIFICATION
Heavy-duty ——— Light-duty ———
Medium-duty ——— Unimproved dirt ———
○ State Route



QUADRANGLE LOCATION

U.S.G.S. PENNINGTON, N. J.-PA.
SE/4 LAMBERTVILLE 15' QUADRANGLE
N4015-W7445/7.5
1954

USGS
Historical File
Topographic Division

4645