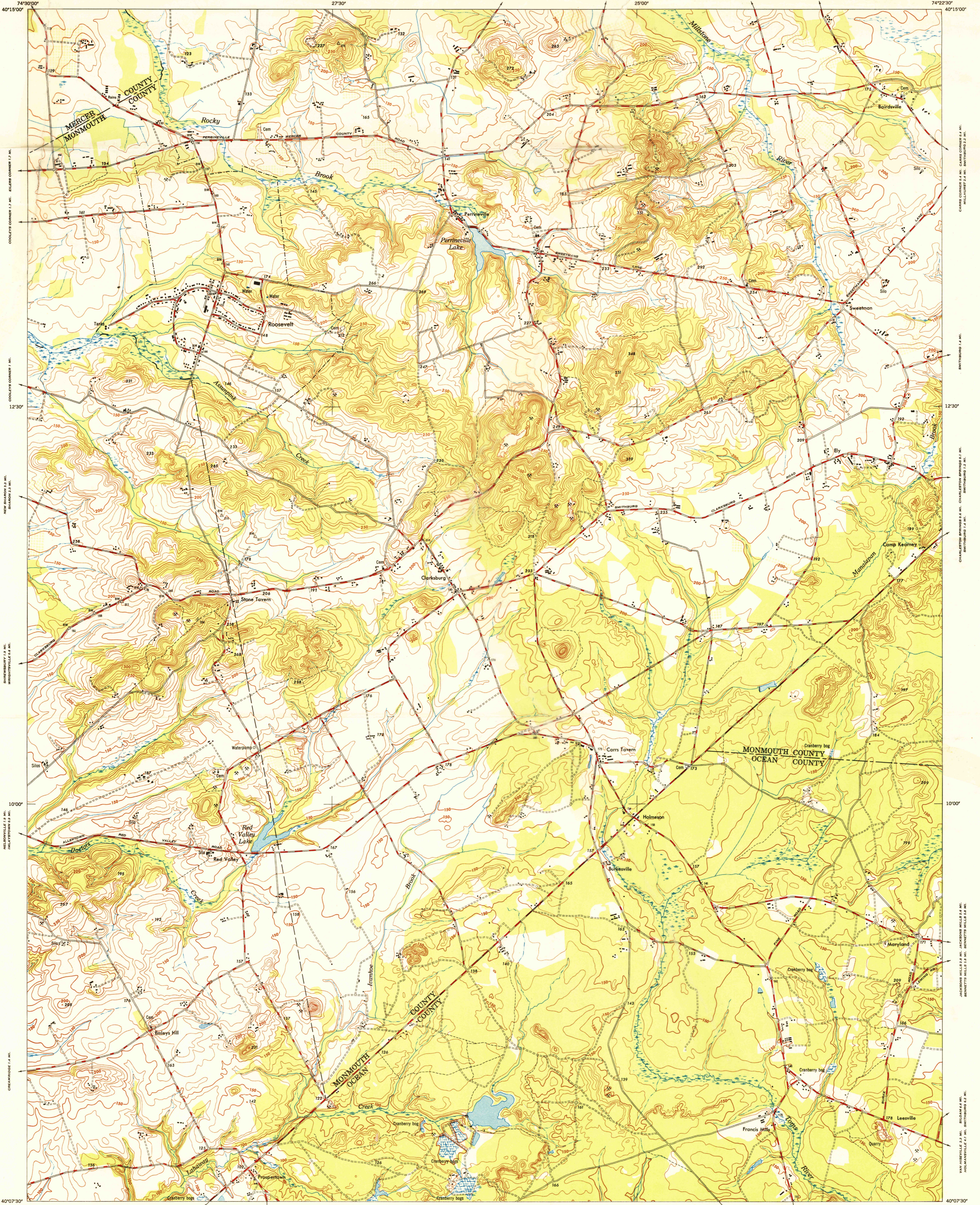


Roosevelt

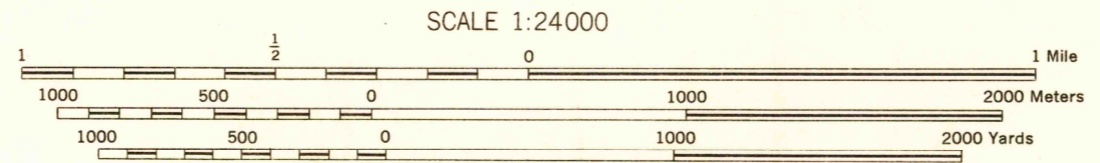


U.S.G.S. FILE COPY Inspection and Mailing

U.S.G.S. FILE COPY Inspection and Mailing

AMS 3, 1948

Prepared under the direction of the Chief of Engineers by the Army Map Service (AM), Corps of Engineers, Department of the Army, Washington, D. C. Compiled in 1948 by stereogrammetric (multiplex) methods by reference to New Jersey 1:25,000, A.M.S. Jersey Highlands, 1944. Aerial photography April 1947. Horizontal and vertical control by USCGS, USGS, CE and New Jersey Geodetic Control Survey, Map field checked.



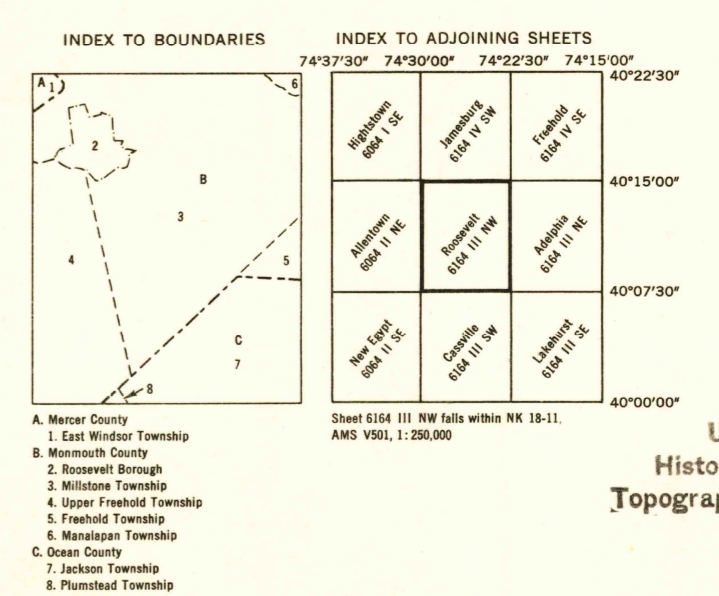
SCALE 1:24000  
CONTOUR INTERVAL 10 FEET  
DATUM IS 1929 MEAN SEA LEVEL  
TRANSVERSE MERCATOR PROJECTION  
1927 NORTH AMERICAN DATUM

LEGEND

Table with 4 columns: Road types (e.g., Hard surface, heavy duty road), Railroads (e.g., Standard gauge, Single track), Boundaries (e.g., National, County), and other features (e.g., Loose surface, graded and drained, Spot elevation in feet).

REPRINTED FROM MILITARY EDITION FOR CIVIL USE  
SOLD AND DISTRIBUTED BY U. S. GEOLOGICAL SURVEY, WASHINGTON 25, D. C.

101° TRUE NORTH  
MAGNETIC NORTH  
APPROXIMATE MEAN DECLINATION, 1947



USGS Historical File Topographic Division

U.S.G.S. FILE COPY Inspection and Mailing

Roosevelt, New Jersey  
N4007.5-W7422.5/7.5

11-5-49  
2025