

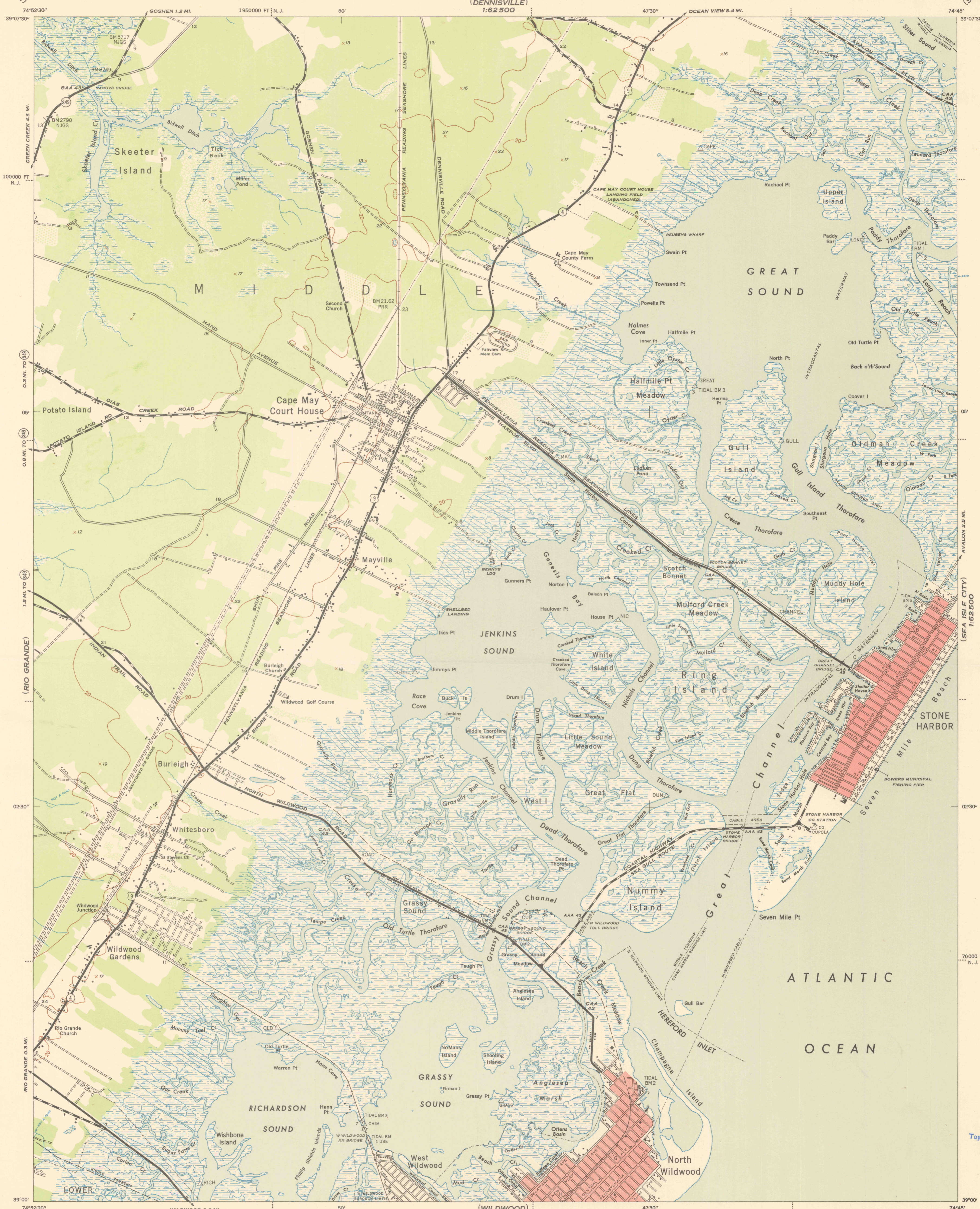
(DENNISVILLE)
1:62,500

NEW JERSEY
CAPE MAY COUNTY

WAR DEPARTMENT
CORPS OF ENGINEERS, U. S. ARMY

STONE HARBOR QUADRANGLE
7 1/2-MINUTE SERIES

(SEA ISLE CITY)
1:62,500



Mapped by the U. S. Coast and Geodetic Survey under the direction of the Chief of Engineers, U. S. Army, 1943. Control by the U. S. Coast and Geodetic Survey. Planimetry by U. S. C. & G. S. from 1943 air photographs. Planimetric topography and field edit by U. S. C. & G. S., 1943. Polyconic projection, North American datum of 1927. Recoverable horizontal control stations of less than third order accuracy are shown by circles.

ROAD CLASSIFICATION 1943

Dependable hard-surface, heavy-duty road. Loose-surface graded, dry-weather road. U. S. route 74

Secondary, hard-surface, all-weather road. Dirt road. State route 26

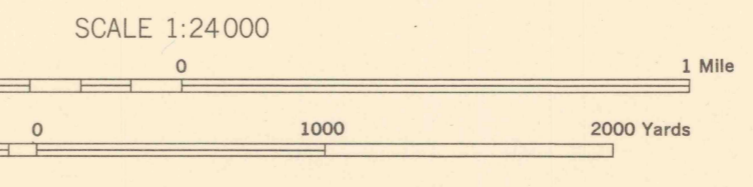
More than two lanes indicated by note along road with tick at point of change

3 LANE 1 LANE

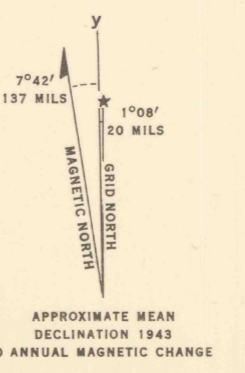
THIS MAP COMPLIES WITH THE NATIONAL STANDARD MAP ACCURACY REQUIREMENTS

LETTERED CONTROL STATIONS

A-5760 NGS BM Elev. 6
B-5761 NGS
C-CLUB 2
D-TIDAL BM NO 2 Elev. 7
E-STANDPIPE
F-HERFORD INLET LIGHT
G-ALUMINUM TANK
H-5770 NGS



CONTOUR INTERVAL 20 FEET
DATUM IS MEAN SEA LEVEL



WOODLAND CLASSIFICATION

Dense woodland
Dense brush
Scattered brush and trees
Orchard
Marsh or swamp
Low ground, intermittently flooded

Gray tint indicates areas in which only landmark buildings are shown.

STONE HARBOR, N.J.
N3900-W7445/7.5
EDITION OF 1944

USGS
Historical File
Topographic Division

USGS
Historical File
Topographic Division

U.S.G.S.
FILE COPY

5-17-50
3130