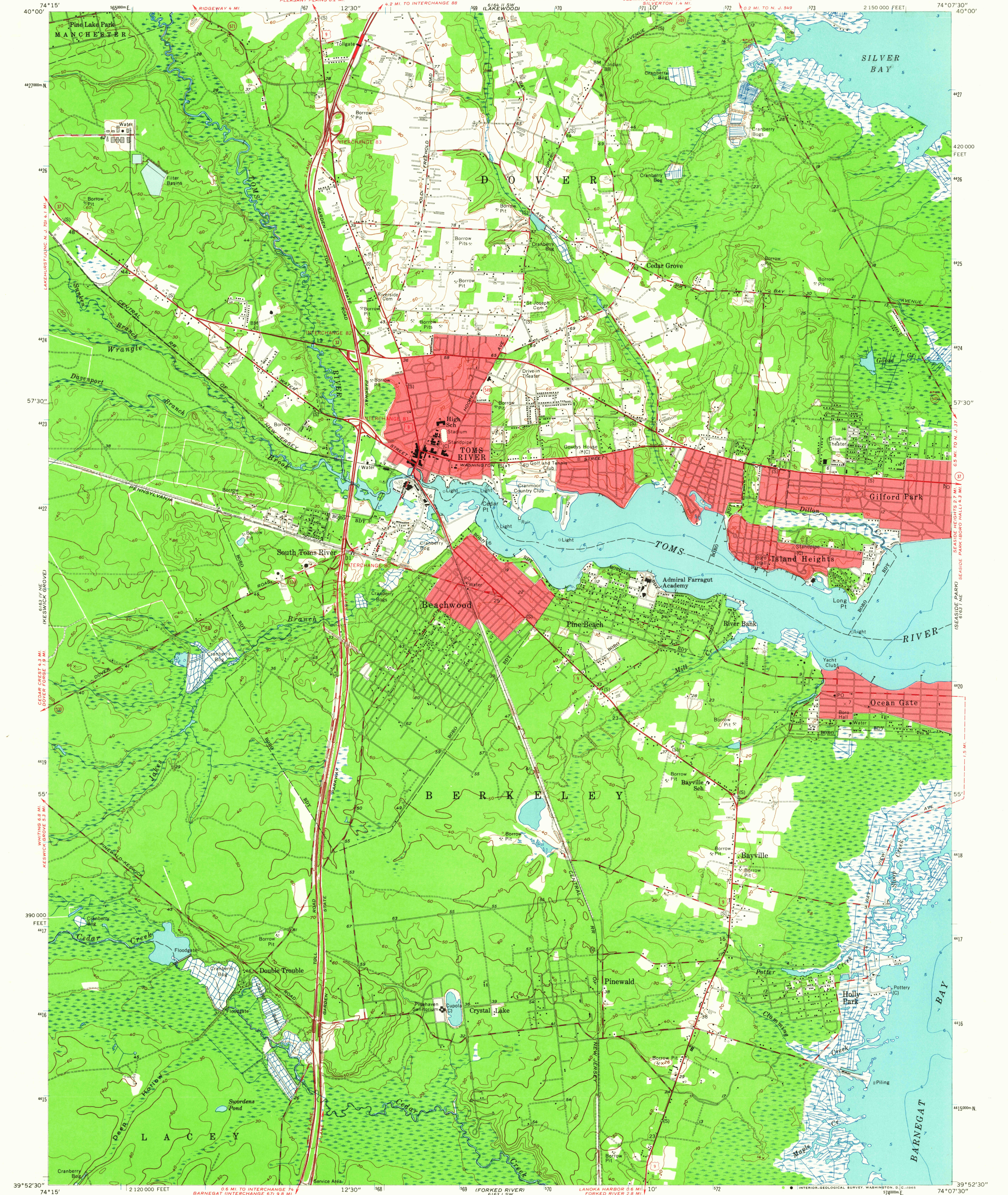


UNITED STATES
DEPARTMENT OF THE INTERIOR
GEOLOGICAL SURVEY

UNITED STATES
DEPARTMENT OF COMMERCE
COAST AND GEODETIC SURVEY

TOMS RIVER QUADRANGLE
NEW JERSEY—OCEAN CO.
7.5 MINUTE SERIES (TOPOGRAPHIC)
NW/4 TOMS RIVER 15' QUADRANGLE



Maped by U. S. Coast and Geodetic Survey
Edited and published by the Geological Survey

Control by USC&GS(C), USCE(E), and New Jersey
Geodetic Survey(S)

Culture and drainage in part compiled from aerial
photographs taken 1952. Topography by Kelsh plotter
and by planetable surveys 1951. Field check 1953

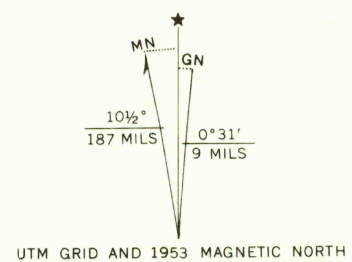
Hydrography compiled from USC&GS chart 825 (1954)

Polyconic projection. 1927 North American datum
10,000-foot grid based on New Jersey coordinate system
1000-meter Universal Transverse Mercator grid ticks,
zone 18, shown in blue

Red tint indicates areas in which only
landmark buildings are shown

Unchecked elevations are shown in brown

Ocean Gate borough boundary
in Toms River is low water line



SCALE 1:24,000

1000 0 1000 2000 3000 4000 5000 6000 7000 FEET

1 5 0 5 1 KILOMETER

CONTOUR INTERVAL 10 FEET
DATUM IS MEAN SEA LEVEL

DEPTH CURVES AND SOUNDINGS IN FEET—DATUM IS MEAN LOW WATER
SHORELINE SHOWN REPRESENTS THE APPROXIMATE LINE OF MEAN HIGH WATER
THE MEAN RANGE OF TIDE IS APPROXIMATELY 0.6 FEET

THIS MAP COMPLIES WITH NATIONAL MAP ACCURACY STANDARDS
FOR SALE BY U. S. GEOLOGICAL SURVEY, WASHINGTON 25, D. C.

A FOLDER DESCRIBING TOPOGRAPHIC MAPS AND SYMBOLS IS AVAILABLE ON REQUEST



NEW JERSEY
QUADRANGLE LOCATION

ROAD CLASSIFICATION

Heavy-duty ——— Light-duty ———

Medium-duty ——— Unimproved dirt ———

U. S. Route ——— State Route ———

U. S. Route ——— State Route ———

U. S. Route ——— State Route ———

U. S. Route ——— State Route ———

U. S. Route ——— State Route ———

TOMS RIVER, N. J.

NW/4 TOMS RIVER 15' QUADRANGLE
N3952.5—W7407.5/7.5

1953

AMS 6163 1 NW—SERIES V822

U.S.G.S.
FILE COPY
TOPOGRAPHIC DIVISION

MAR 17 1965

5070

USGS

Historical File

Topographic Division