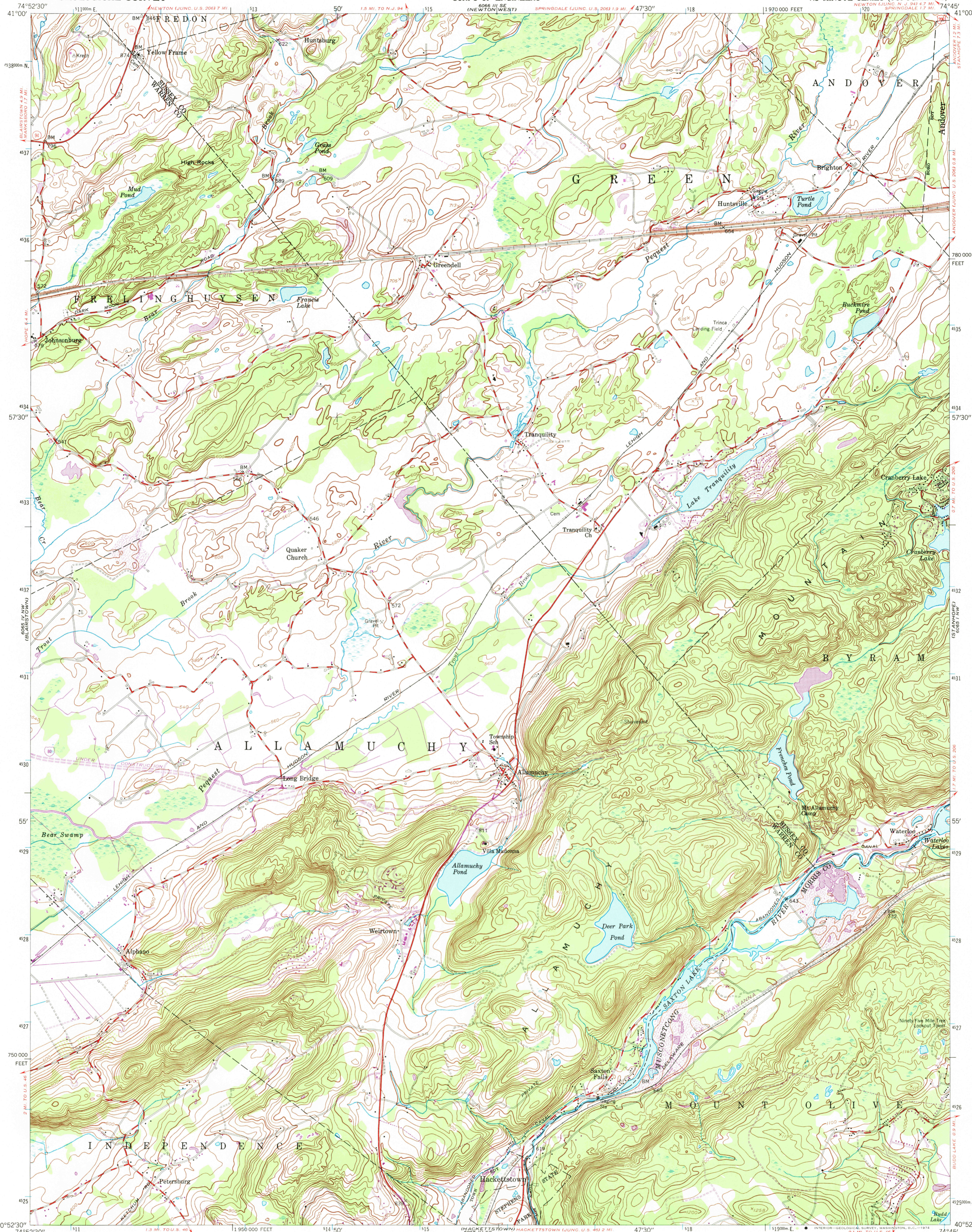
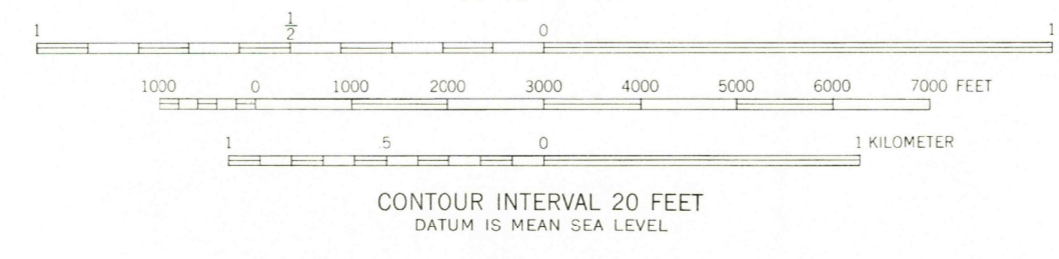
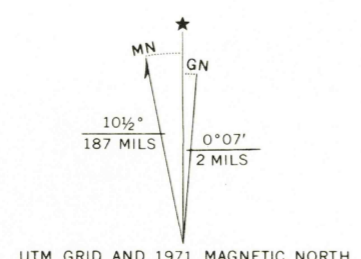


6888 BY
INSE-ONLY E-2571



Mapped by the Army Map Service
Edited and published by the Geological Survey
Control by USGS, USC&GS, and New Jersey Geodetic Survey
Topography from aerial photographs by stereophotogrammetric methods. Aerial photographs taken 1942. Field check 1943
Culture revised by the Geological Survey 1954
Polyconic projection 1927 North American datum
10,000-foot grid based on New Jersey coordinate system
1000 meter Universal Transverse Mercator grid ticks, zone 18, shown in blue
Revisions shown in purple compiled by the Geological Survey from aerial photographs taken 1971. This information not field checked



ROAD CLASSIFICATION

Primary highway, hard surface	Light-duty road, hard or improved surface
Secondary highway, hard surface	Unimproved road
Interstate Route	U. S. Route
	State Route



THIS MAP COMPLIES WITH NATIONAL MAP ACCURACY STANDARDS
FOR SALE BY U. S. GEOLOGICAL SURVEY, WASHINGTON, D. C. 20242
A FOLDER DESCRIBING TOPOGRAPHIC MAPS AND SYMBOLS IS AVAILABLE ON REQUEST

TRANQUILITY, N. J.
N4052.5-W7445/7.5
1954
PHOTOREVISED 1971
AMS 6065 IV NE-SERIES V822

FEB 0 4 1974

3440