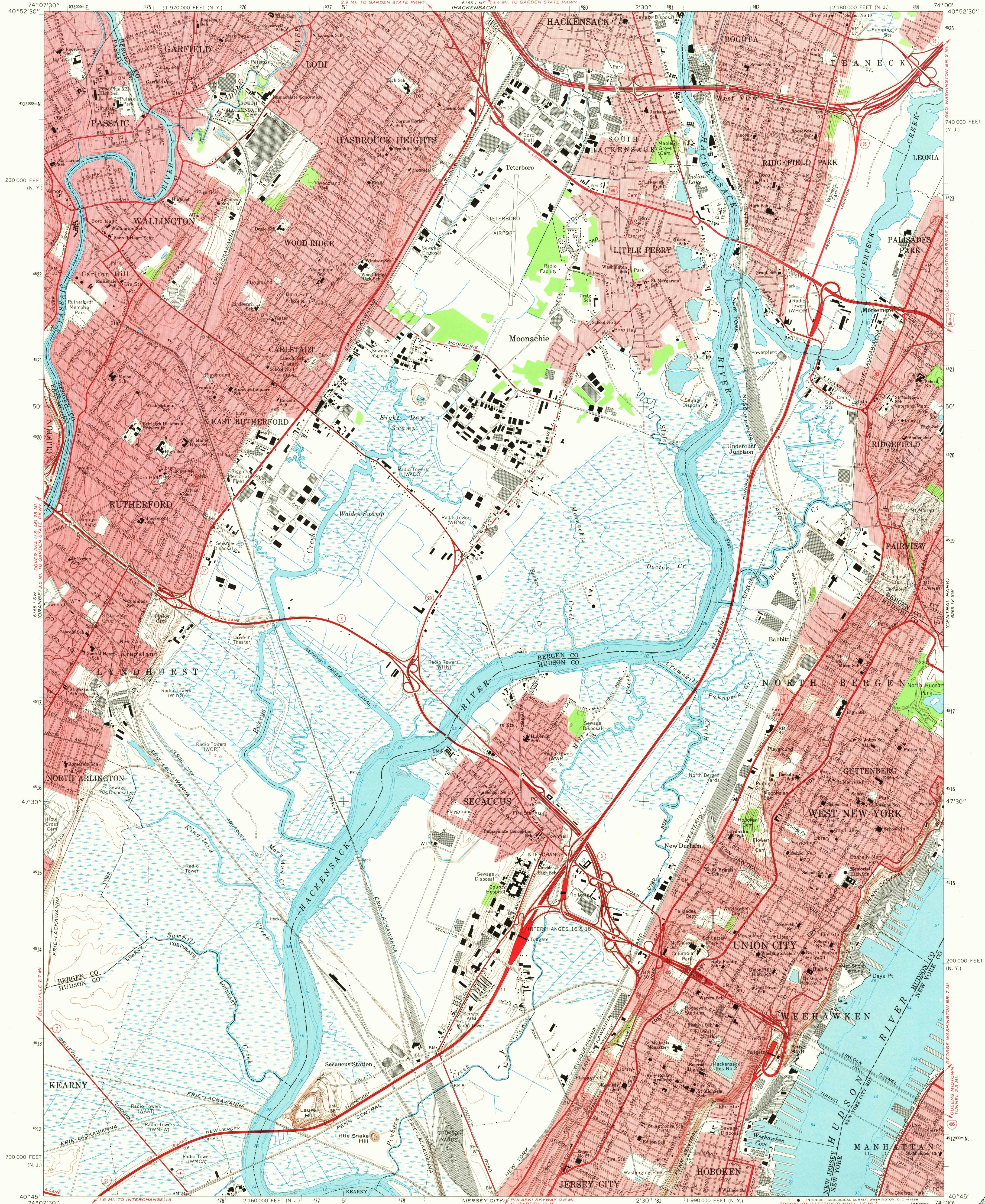


UNITED STATES
DEPARTMENT OF THE INTERIOR
GEOLOGICAL SURVEY

WEEHAWKEN QUADRANGLE
NEW JERSEY—NEW YORK
7.5 MINUTE SERIES (TOPOGRAPHIC)



Maped, edited, and published by the Geological Survey
Revised in cooperation with New York Department of Transportation
Control by USGS, USC&GS, USCE, and New Jersey Geodetic Survey
Topography by planetable surveys 1935.
Revised from aerial photographs taken 1966. Field checked 1967
Selected hydrographic data compiled from USC&GS Charts 287, 745,
and 746 (1966). This information is not intended for navigational purposes
Polyconic projection. 1927 North American datum
10,000-foot grids based on New Jersey coordinate system,
and New York coordinate system, Long Island zone
1000-meter Universal Transverse Mercator grid ticks,
zone 18, shown in blue
Red tint indicates areas in which only landmark buildings are shown

SCALE 1:24,000
CONTOUR INTERVAL 10 FEET
DATUM IS MEAN SEA LEVEL
DEPTH CURVES AND SOUNDINGS IN FEET—DATUM IS MEAN LOW WATER
SHORELINE SHOWN REPRESENTS THE APPROXIMATE LINE OF MEAN HIGH WATER
THE MEAN RANGE OF TIDE IS APPROXIMATELY 4.2 FEET IN THE HUDSON RIVER
AND 5.1 FEET IN THE HACKENSACK AND PASSAIC RIVERS
THIS MAP COMPLIES WITH NATIONAL MAP ACCURACY STANDARDS
FOR SALE BY U. S. GEOLOGICAL SURVEY, WASHINGTON, D. C. 20542
A FOLDER DESCRIBING TOPOGRAPHIC MAPS AND SYMBOLS IS AVAILABLE ON REQUEST

ROAD CLASSIFICATION
Heavy-duty ——— Light-duty ———
Medium-duty ——— Unimproved dirt ———
Interstate Route U. S. Route State Route

U.S.G.S.
FILE COPY
TOPOGRAPHIC DIVISION
WEEHAWKEN, N. J.—N. Y.
N4045—W7400/7.5
1967
AMS 6165 I SE—SERIES V822

8235
DEC 17 1968
U.S.G.S. Historical File
Topographic Division