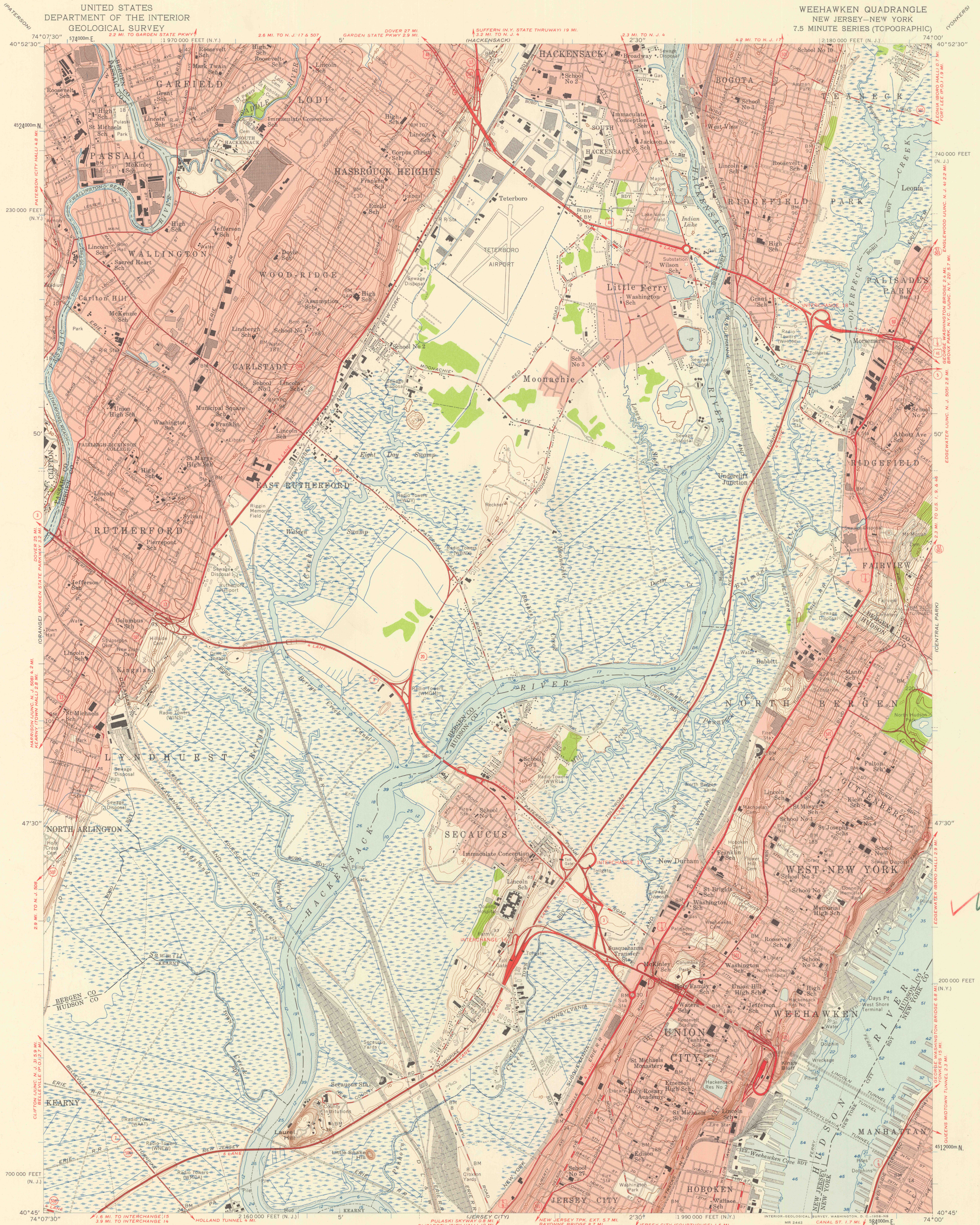


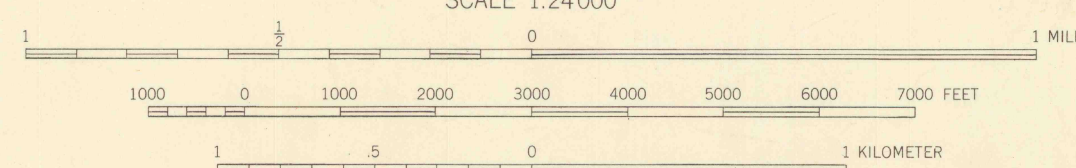
UNITED STATES
DEPARTMENT OF THE INTERIOR
GEOLOGICAL SURVEY

WEEHAWKEN QUADRANGLE
NEW JERSEY-NEW YORK
7.5 MINUTE SERIES (TOPOGRAPHIC)



Mapped, edited, and published by the Geological Survey
Control by USGS, USC&GS, USCE, and New Jersey Geodetic Survey
Culture and drainage in part compiled from aerial photographs
Topography by planetable surveys 1935. Culture revised 1955
Hydrography compiled from USC&GS charts 287 (1954), 745 (1956),
and 746 (1956)
Polyconic projection. 1927 North American datum
10,000-foot grids based on New Jersey coordinate system,
and New York coordinate system, Long Island zone
1000-meter Universal Transverse Mercator grid ticks,
zone 18, shown in blue
Red tint indicates areas in which only
landmark buildings are shown

TRUE NORTH
MAGNETIC NORTH
APPROXIMATE MEAN
DECLINATION, 1955



CONTOUR INTERVAL 10 FEET
CAPTURE IS MEAN SEA LEVEL
DEPTH CURVES AND SOUNDINGS IN FEET-DATUM IS MEAN LOW WATER
SHORELINE SHOWN REPRESENTS THE APPROXIMATE LINE OF MEAN HIGH WATER
THE MEAN RANGE OF TIDE IS APPROXIMATELY 4.2 FEET IN THE HUDSON RIVER
AND 5.2 FEET IN THE HACKENSACK AND PASSAIC RIVERS

THIS MAP COMPLIES WITH NATIONAL MAP ACCURACY STANDARDS
FOR SALE BY U. S. GEOLOGICAL SURVEY, WASHINGTON 25, D. C.
A FOLDER DESCRIBING TOPOGRAPHIC MAPS AND SYMBOLS IS AVAILABLE ON REQUEST



ROAD CLASSIFICATION
Heavy-duty ——— Light-duty ———
Medium-duty ——— Unimproved dirt ———
U. S. Route ——— State Route ———

WEEHAWKEN, N. J.-N. Y.
N4045-W7400/7.5

1955



FILE COPY
JAY 8 1958
MAP INFORMATION OFFICE
GEOLOGICAL SURVEY