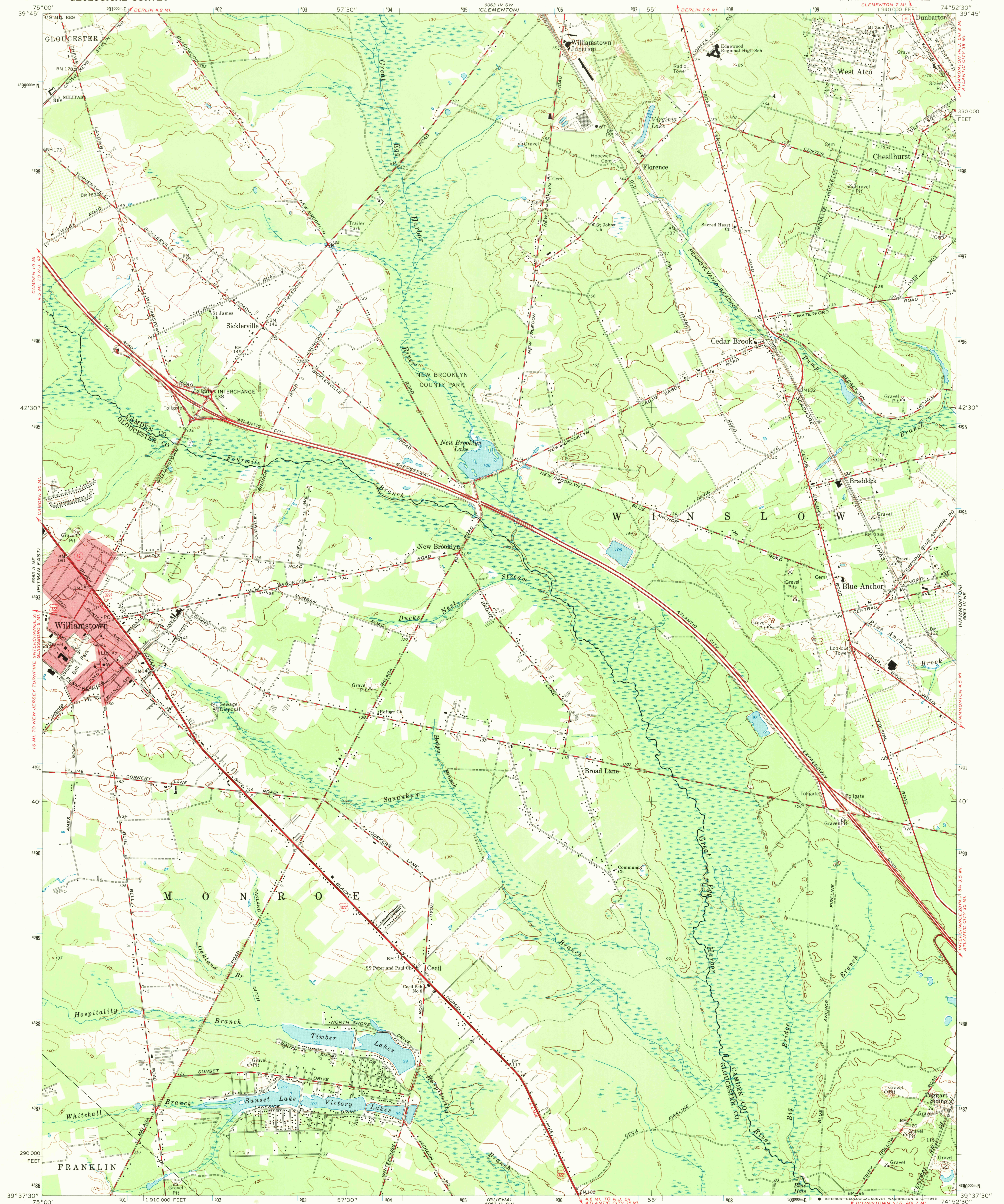


UNITED STATES
DEPARTMENT OF THE INTERIOR
GEOLOGICAL SURVEY

WILLIAMSTOWN QUADRANGLE
NEW JERSEY
7.5 MINUTE SERIES (TOPOGRAPHIC)
NW/4 HAMMONTON 15' QUADRANGLE



Mapped, edited, and published by the Geological Survey
Control by USGS, USC&GS, and New Jersey Geodetic Survey
Planimetry by photogrammetric methods from aerial photographs taken 1951. Topography by planimetric surveys 1953. Revised 1966
Polyconic projection. 1927 North American datum
10,000-foot grid based on New Jersey coordinate system
1000-meter Universal Transverse Mercator grid ticks, zone 18, shown in blue
Fine red dashed lines indicate selected fence and field lines where generally visible on aerial photographs. This information is unchecked
Red tint indicates area in which only landmark buildings are shown

UTM GRID AND 1966 MAGNETIC NORTH DECLINATION AT CENTER OF SHEET

SCALE 1:24,000
CONTOUR INTERVAL 10 FEET
DATUM IS MEAN SEA LEVEL

ROAD CLASSIFICATION
Heavy-duty ——— Light-duty ———
Medium-duty ——— Unimproved dirt ———
U.S. Route State Route

U.S.G.S. FILE COPY TOPOGRAPHIC DIVISION
WILLIAMSTOWN, N.J.
NW/4 HAMMONTON 15' QUADRANGLE
N3937.5—W7452.7/5
1966
AMS 6063 III NW—SERIES V822

THIS MAP COMPLIES WITH NATIONAL MAP ACCURACY STANDARDS
FOR SALE BY U.S. GEOLOGICAL SURVEY, WASHINGTON, D. C. 20242
A FOLDER DESCRIBING TOPOGRAPHIC MAPS AND SYMBOLS IS AVAILABLE ON REQUEST