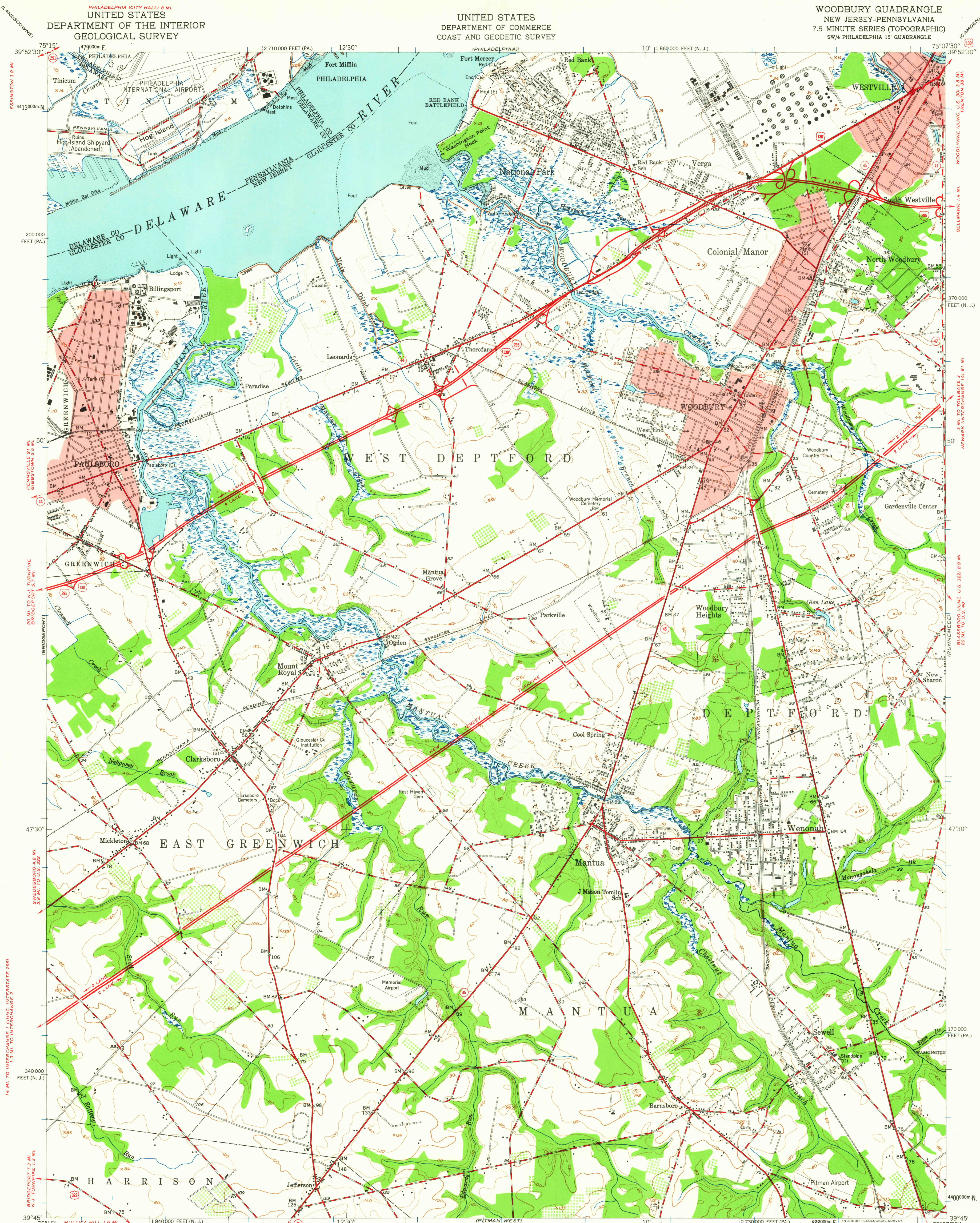


UNITED STATES  
DEPARTMENT OF THE INTERIOR  
GEOLOGICAL SURVEY

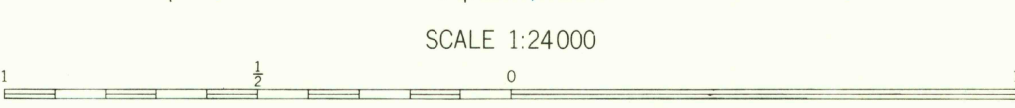
UNITED STATES  
DEPARTMENT OF COMMERCE  
COAST AND GEODETIC SURVEY

WOODBURY QUADRANGLE  
NEW JERSEY-PENNSYLVANIA  
7.5 MINUTE SERIES (TOPOGRAPHIC)  
SW/4 PHILADELPHIA 15' QUADRANGLE



Maped by the U. S. Coast & Geodetic Survey  
Edited and published by the Geological Survey  
Control by USC&GS (C), USED (E), and  
New Jersey Geodetic Control Survey (S)  
Culture and drainage in part compiled from  
aerial photographs taken 1946  
Topography by plane-table methods 1946. Field check 1949  
Polyconic projection. 1927 North American datum  
10,000-foot grids based on New Jersey coordinate system and  
Pennsylvania coordinate system, south zone  
No distinction is made between dwellings, barns,  
commercial and industrial buildings  
Red tint indicates areas in which only  
landmark buildings are shown  
Unchecked elevations are shown in brown  
1000-meter Universal Transverse Mercator grid ticks,  
zone 18, shown in blue

WOODSTOWN (U.S. 322) 9.9 MI.  
APPROXIMATE MEAN  
DECLINATION, 1949



CONTOUR INTERVAL 20 FEET  
DOTTED LINES REPRESENT HALF-INTERVAL CONTOURS  
DATUM IS MEAN SEA LEVEL  
SHORELINE SHOWN REPRESENTS THE APPROXIMATE LINE OF MEAN HIGH WATER  
THE AVERAGE RANGE OF TIDE IS APPROXIMATELY 5 FEET  
THIS MAP COMPLIES WITH NATIONAL MAP ACCURACY STANDARDS  
FOR SALE BY U. S. GEOLOGICAL SURVEY, WASHINGTON 25, D. C.  
A FOLDER DESCRIBING TOPOGRAPHIC MAPS AND SYMBOLS IS AVAILABLE ON REQUEST

ROAD CLASSIFICATION  
Heavy-duty ——— Light-duty ———  
Medium-duty ——— Unimproved dirt ———  
Interstate Route U. S. Route State Route  
GLASSBORO (U.S. 322) 3.5 MI.  
PITMAN (U.S. 322) 3.5 MI.  
WOODBURY, N. J.-PA  
SW/4 PHILADELPHIA 15' QUADRANGLE  
N3945-W7507.5/7.5  
USGS  
Historical File  
Topographic Division  
1949

1935