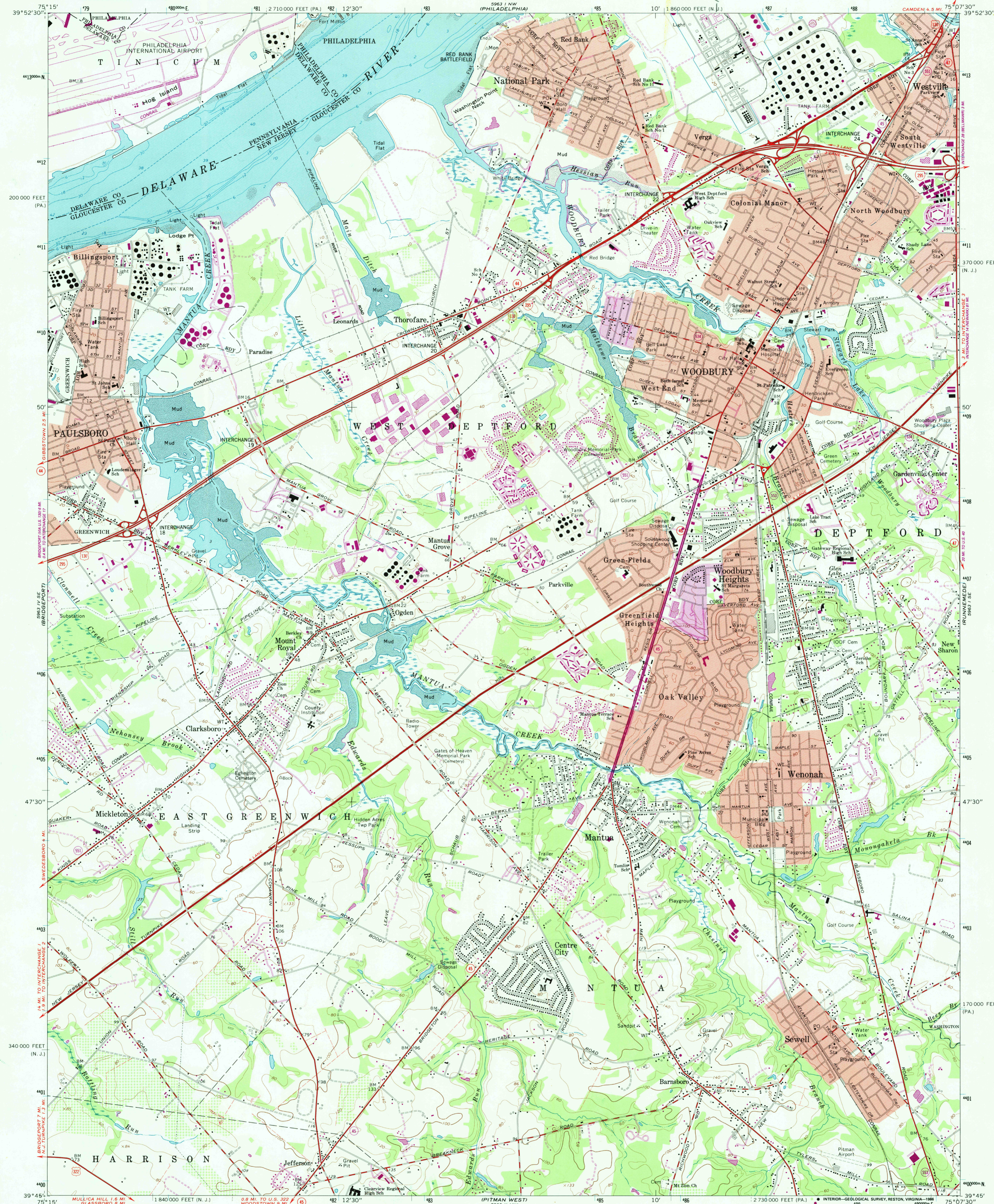
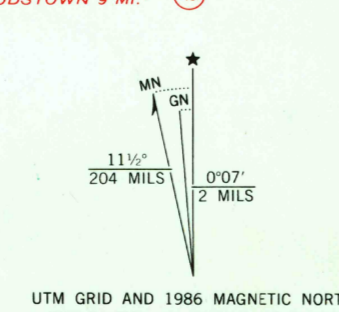


UNITED STATES
DEPARTMENT OF THE INTERIOR
GEOLOGICAL SURVEY

WOODBURY QUADRANGLE
NEW JERSEY-PENNSYLVANIA
7.5 MINUTE SERIES (TOPOGRAPHIC)



Mapped by the U. S. Coast & Geodetic Survey
Edited and published by the Geological Survey
Control by USGS, NOS/NOAA, USCE, and New Jersey Geodetic Survey
Planimetry by photogrammetric methods from aerial photographs
taken 1946. Topography by planetable surveys 1946. Revised from
aerial photographs taken 1965. Field checked 1967.
Selected hydrographic data compiled from NOS Charts 280 and
295 (1967). This information is not intended for navigational purposes.
Polyconic projection. 10,000-foot grid ticks based on New Jersey
coordinate system and Pennsylvania coordinate system, south zone
1000-meter Universal Transverse Mercator grid ticks,
zone 18, shown in blue.
1927 North American Datum
To place on the predicted North American Datum 1983
move the projection lines 6 meters south and
31 meters west as shown by dashed corner ticks.
Fine red dashed lines indicate selected fence and field lines where
generally visible on aerial photographs. This information is unchecked.
Red tint indicates areas in which only landmark buildings are shown.



SCALE 1:24,000
CONTOUR INTERVAL 20 FEET
DOTTED LINES REPRESENT 10-FOOT CONTOURS
NATIONAL GEODETIC VERTICAL DATUM OF 1929
DEPTH CURVES AND SOUNDINGS IN FEET—DATUM IS MEAN LOW WATER
SHORELINE SHOWN REPRESENTS THE APPROXIMATE LINE OF MEAN HIGH WATER
THE MEAN RANGE OF TIDE IS APPROXIMATELY 5.7 FEET
THIS MAP COMPLIES WITH NATIONAL MAP ACCURACY STANDARDS
FOR SALE BY U.S. GEOLOGICAL SURVEY, RESTON, VIRGINIA 22092
A FOLDER DESCRIBING TOPOGRAPHIC MAPS AND SYMBOLS IS AVAILABLE ON REQUEST

RETURN TO:
USGS AND HISTORICAL MAP ARCHIVES

ROAD CLASSIFICATION
Heavy-duty ————— Light-duty —————
Medium-duty ————— Unimproved dirt —————
Interstate Route U.S. Route State Route



WOODBURY, N. J. - PA.
39075-G2-TF-024

1967
PHOTOREVISED 1986
DMA 5963 I-S-W SERIES V922