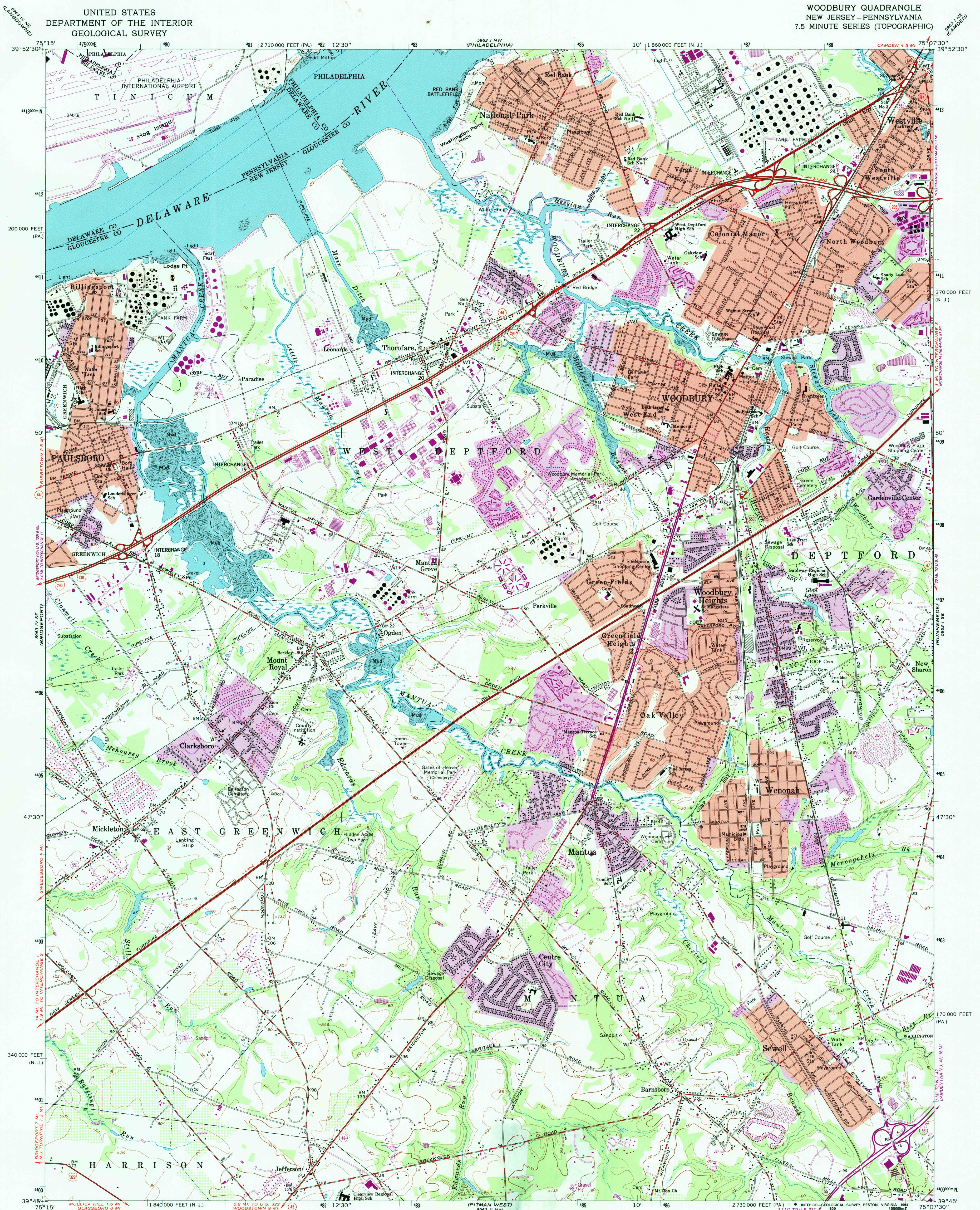
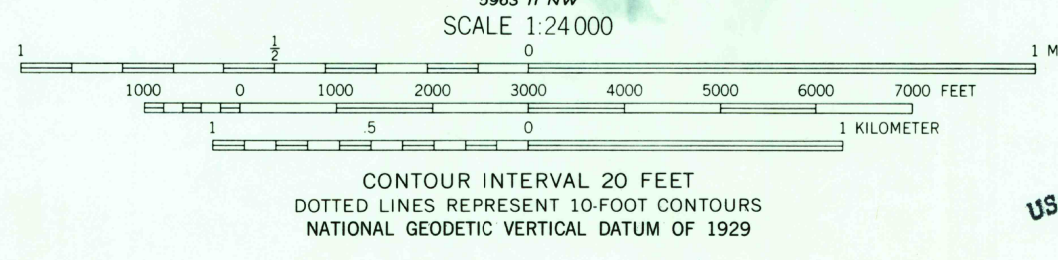
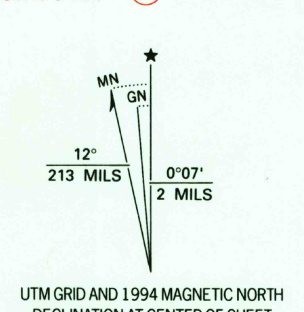


UNITED STATES
DEPARTMENT OF THE INTERIOR
GEOLOGICAL SURVEY

WOODBURY QUADRANGLE
NEW JERSEY-PENNSYLVANIA
7.5 MINUTE SERIES (TOPOGRAPHIC)



Mapped by the U.S. Coast and Geodetic Survey
Revised by the United States Geological Survey
Control by USGS, NOS/NOAA, USCE, and New Jersey Geodetic Survey
Planimetry by photogrammetric methods from aerial photographs
taken 1946. Topography by planimetric surveys 1946. Revised from
aerial photographs taken 1965. Field checked 1967
Projection: New Jersey coordinate system, (transverse Mercator)
10,000-foot grid ticks: New Jersey coordinate system,
and Pennsylvania coordinate system, south zone
1000-meter Universal Transverse Mercator grid ticks, zone 18, shown in blue
1927 North American Datum (NAD 27)
North American Datum of 1983 (NAD 83) is shown by dashed corner ticks
The values of the shift between NAD 27 and NAD 83 for 7.5-minute
intersections are given in USGS Bulletin 1875
There may be private inholdings within the boundaries of
the National or State reservations shown on this map
Red tint indicates areas in which only landmark buildings are shown
Fine red dashed lines indicate selected fence and field lines
generally visible on aerial photographs. This information is unchecked



RETURN TO:
USGS AND HISTORICAL MAP ARCHIVES
NEW JERSEY

ROAD CLASSIFICATION

Primary highway, hard surface	Light-duty road, hard or improved surface
Secondary highway, hard surface	Unimproved road
Interstate Route	U.S. Route
	State Route

THIS MAP COMPLIES WITH NATIONAL MAP ACCURACY STANDARDS
FOR SALE BY U.S. GEOLOGICAL SURVEY, DENVER, COLORADO 80225, OR RESTON, VIRGINIA 22092
A FOLDER DESCRIBING TOPOGRAPHIC MAPS AND SYMBOLS IS AVAILABLE ON REQUEST

Revisions shown in purple compiled from aerial
photographs taken 1990 and other sources. This
information not field checked. Map edited 1994
Information shown in purple may not meet USGS content
standards and may conflict with previously mapped contours
Purple tint indicates extension of urban areas

WOODBURY, N.J.-PA.
39075-G2-1F-024
1967
REVISED 1994
DMA 5963 1 SW-SERIES V822