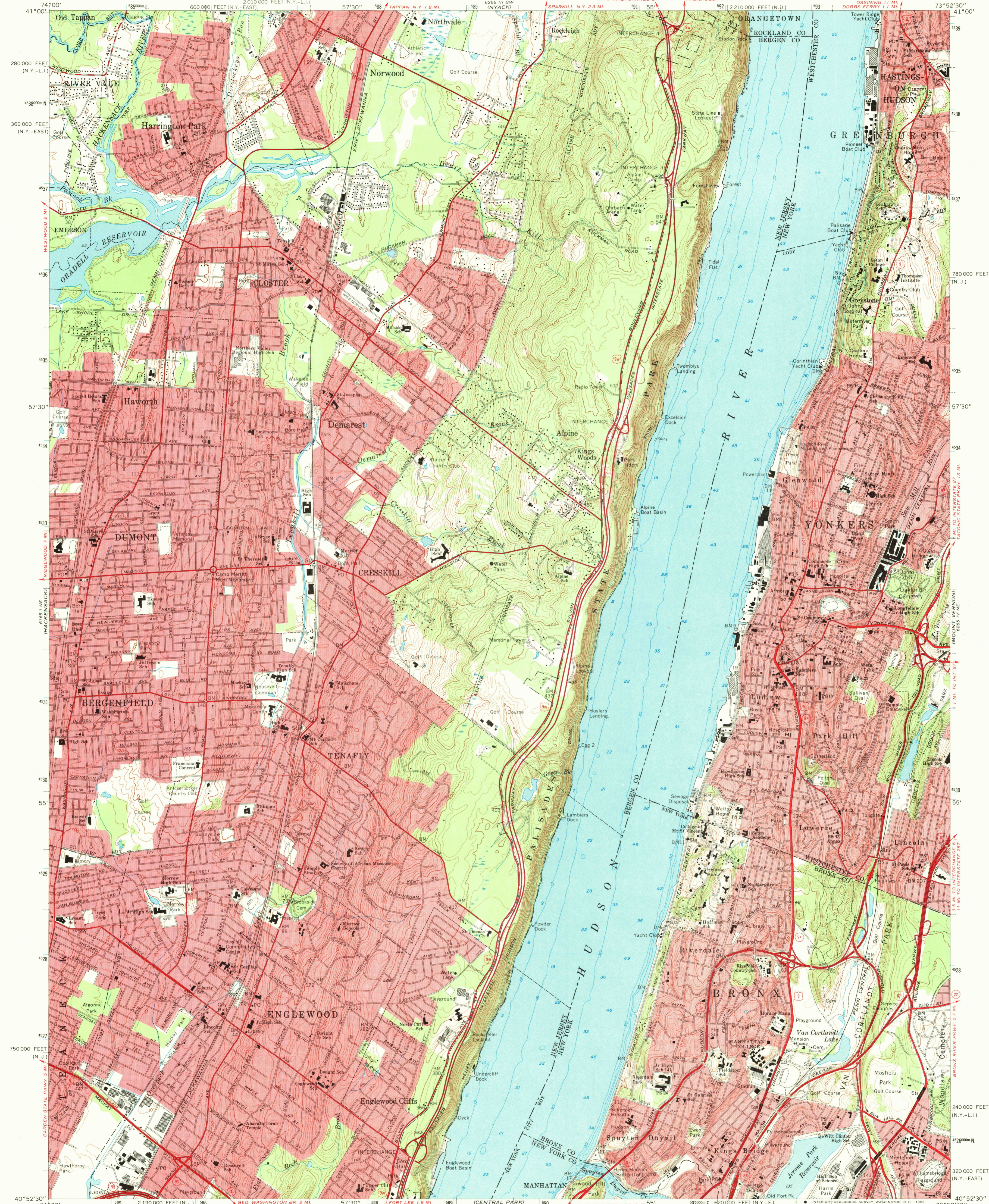
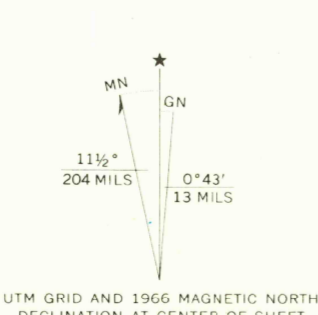


UNITED STATES
DEPARTMENT OF THE INTERIOR
GEOLOGICAL SURVEY

YONKERS, N.J.—N.Y.
NEW JERSEY—NEW YORK
7.5 MINUTE SERIES (TOPOGRAPHIC)
NW/4 HARLEM 15 QUADRANGLE
DOBS LAKE 1.1 MI.
OSKINS 1.1 MI.
TOWER RIDGE 1.1 MI.
YACHT CLUB 1.1 MI.
PALISADES N.Y. 7 MI.
SPARKILL N.Y. 2.3 MI.
3 MI. TO INTERCHANGE 5
8 MI. TO INT. 287
1.1 MI. TO U.S. 1
1.1 MI. TO INTERCHANGE 2
1.1 MI. TO INTERCHANGE 3
1.1 MI. TO INTERCHANGE 4
1.1 MI. TO INTERCHANGE 5
1.1 MI. TO INTERCHANGE 6
1.1 MI. TO INTERCHANGE 7
1.1 MI. TO INTERCHANGE 8
1.1 MI. TO INTERCHANGE 9
1.1 MI. TO INTERCHANGE 10
1.1 MI. TO INTERCHANGE 11
1.1 MI. TO INTERCHANGE 12
1.1 MI. TO INTERCHANGE 13
1.1 MI. TO INTERCHANGE 14
1.1 MI. TO INTERCHANGE 15
1.1 MI. TO INTERCHANGE 16
1.1 MI. TO INTERCHANGE 17
1.1 MI. TO INTERCHANGE 18
1.1 MI. TO INTERCHANGE 19
1.1 MI. TO INTERCHANGE 20
1.1 MI. TO INTERCHANGE 21
1.1 MI. TO INTERCHANGE 22
1.1 MI. TO INTERCHANGE 23
1.1 MI. TO INTERCHANGE 24
1.1 MI. TO INTERCHANGE 25
1.1 MI. TO INTERCHANGE 26
1.1 MI. TO INTERCHANGE 27
1.1 MI. TO INTERCHANGE 28
1.1 MI. TO INTERCHANGE 29
1.1 MI. TO INTERCHANGE 30
1.1 MI. TO INTERCHANGE 31
1.1 MI. TO INTERCHANGE 32
1.1 MI. TO INTERCHANGE 33
1.1 MI. TO INTERCHANGE 34
1.1 MI. TO INTERCHANGE 35
1.1 MI. TO INTERCHANGE 36
1.1 MI. TO INTERCHANGE 37
1.1 MI. TO INTERCHANGE 38
1.1 MI. TO INTERCHANGE 39
1.1 MI. TO INTERCHANGE 40
1.1 MI. TO INTERCHANGE 41
1.1 MI. TO INTERCHANGE 42
1.1 MI. TO INTERCHANGE 43
1.1 MI. TO INTERCHANGE 44
1.1 MI. TO INTERCHANGE 45
1.1 MI. TO INTERCHANGE 46
1.1 MI. TO INTERCHANGE 47
1.1 MI. TO INTERCHANGE 48
1.1 MI. TO INTERCHANGE 49
1.1 MI. TO INTERCHANGE 50
1.1 MI. TO INTERCHANGE 51
1.1 MI. TO INTERCHANGE 52
1.1 MI. TO INTERCHANGE 53
1.1 MI. TO INTERCHANGE 54
1.1 MI. TO INTERCHANGE 55
1.1 MI. TO INTERCHANGE 56
1.1 MI. TO INTERCHANGE 57
1.1 MI. TO INTERCHANGE 58
1.1 MI. TO INTERCHANGE 59
1.1 MI. TO INTERCHANGE 60
1.1 MI. TO INTERCHANGE 61
1.1 MI. TO INTERCHANGE 62
1.1 MI. TO INTERCHANGE 63
1.1 MI. TO INTERCHANGE 64
1.1 MI. TO INTERCHANGE 65
1.1 MI. TO INTERCHANGE 66
1.1 MI. TO INTERCHANGE 67
1.1 MI. TO INTERCHANGE 68
1.1 MI. TO INTERCHANGE 69
1.1 MI. TO INTERCHANGE 70
1.1 MI. TO INTERCHANGE 71
1.1 MI. TO INTERCHANGE 72
1.1 MI. TO INTERCHANGE 73
1.1 MI. TO INTERCHANGE 74
1.1 MI. TO INTERCHANGE 75
1.1 MI. TO INTERCHANGE 76
1.1 MI. TO INTERCHANGE 77
1.1 MI. TO INTERCHANGE 78
1.1 MI. TO INTERCHANGE 79
1.1 MI. TO INTERCHANGE 80
1.1 MI. TO INTERCHANGE 81
1.1 MI. TO INTERCHANGE 82
1.1 MI. TO INTERCHANGE 83
1.1 MI. TO INTERCHANGE 84
1.1 MI. TO INTERCHANGE 85
1.1 MI. TO INTERCHANGE 86
1.1 MI. TO INTERCHANGE 87
1.1 MI. TO INTERCHANGE 88
1.1 MI. TO INTERCHANGE 89
1.1 MI. TO INTERCHANGE 90
1.1 MI. TO INTERCHANGE 91
1.1 MI. TO INTERCHANGE 92
1.1 MI. TO INTERCHANGE 93
1.1 MI. TO INTERCHANGE 94
1.1 MI. TO INTERCHANGE 95
1.1 MI. TO INTERCHANGE 96
1.1 MI. TO INTERCHANGE 97
1.1 MI. TO INTERCHANGE 98
1.1 MI. TO INTERCHANGE 99
1.1 MI. TO INTERCHANGE 100



Mapped, edited, and published by the Geological Survey
New York area revised in cooperation with New York
Department of Transportation
Control by USGS, USC&GS, USCE, New Jersey Geodetic Survey,
and City of New York Board of Estimate and Apportionment
Topography by photogrammetric methods from aerial photographs
taken 1954. Field checked 1956. Revised 1966
Selected hydrographic data compiled from USC&GS Charts 747 and 748
(1966). This information is not intended for navigational purposes
Polyconic projection. 1927 North American datum.
10,000-foot grids based on New Jersey coordinate system, and
New York coordinate system, east and Long Island zones
1000-meter Universal Transverse Mercator grid ticks,
zone 18, shown in blue
Red tint indicates areas in which only landmark buildings are shown



SCALE 1:24,000
CONTOUR INTERVAL 10 FEET
DATUM IS MEAN SEA LEVEL
DEPTH CURVES AND SOUNDINGS IN FEET—DATUM IS MEAN LOW WATER
SHORELINE SHOWN REPRESENTS THE APPROXIMATE LINE OF MEAN HIGH WATER
THE MEAN RANGE OF TIDE IS APPROXIMATELY 3.7 FEET

ROAD CLASSIFICATION
Heavy-duty ——— Light-duty ———
Medium-duty ——— Unimproved dirt ———
Interstate Route U.S. Route State Route
NEW JERSEY
QUADRANGLE LOCATION
U.S.G.S.
FILE COPY
TOPOGRAPHIC DIVISION
YONKERS, N.J.—N.Y.
NW/4 HARLEM 15 QUADRANGLE
N4052.5—W7352.5/7.5
1966
AMS 6265 IV NW—SERIES V821
USGS
Historical File
Topographic Division