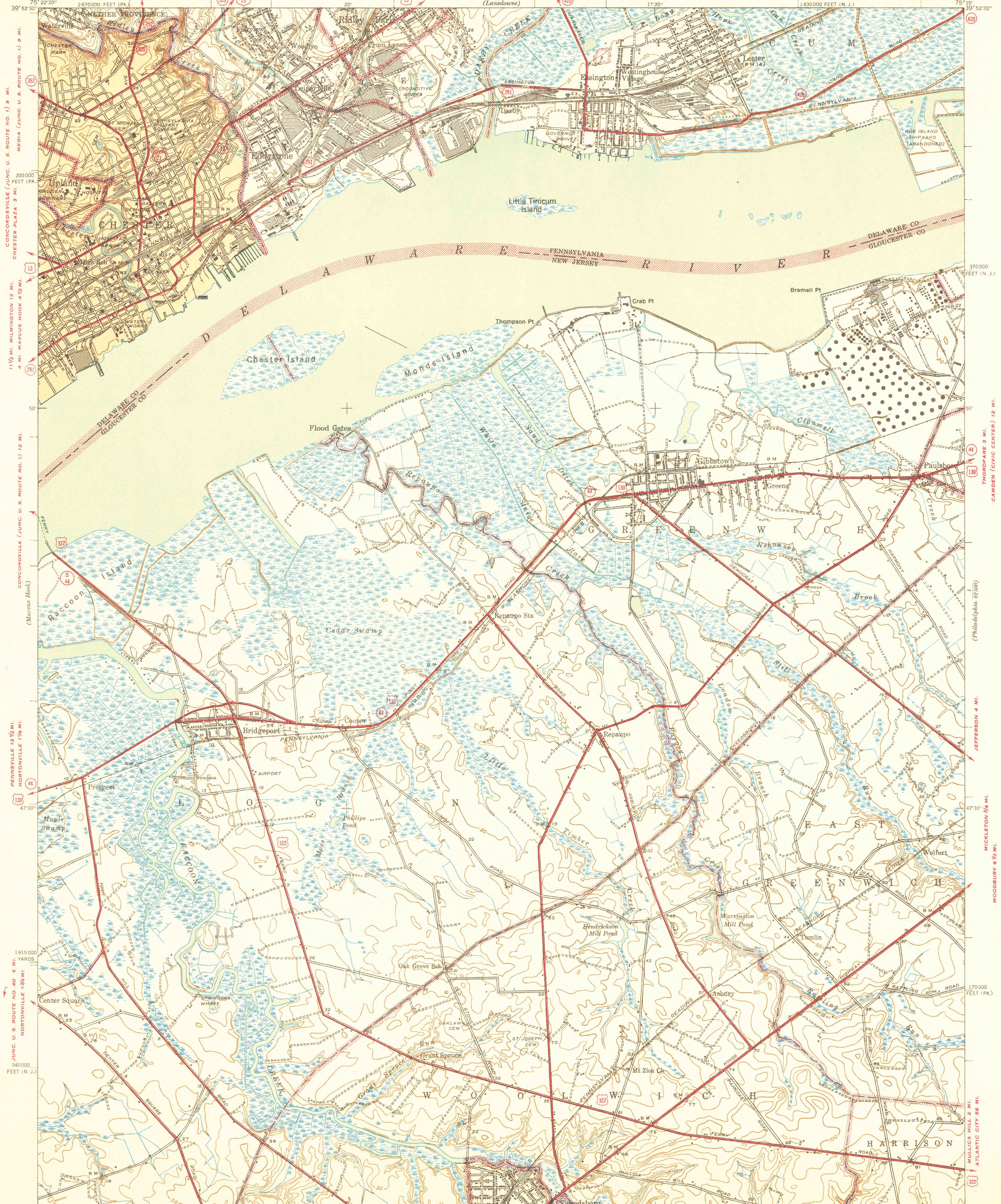
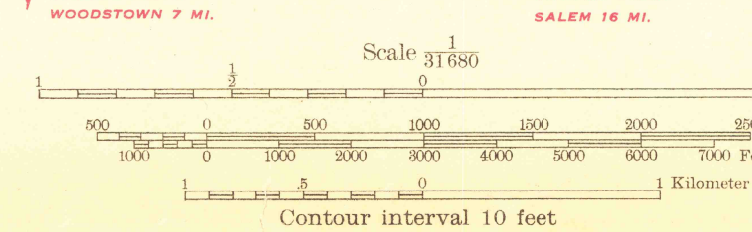


UNITED STATES
DEPARTMENT OF THE INTERIOR
GEOLOGICAL SURVEY

PHILADELPHIA (CITY HALL) 8 MI.
NEW JERSEY-PENNSYLVANIA
BRIDGEPORT QUADRANGLE
7½-MINUTE SERIES



Topography by R. H. Runyan, E. V. Holloway,
J. A. Mattingly, R. J. Scott, and J. W. V. Somers
Surveyed in 1939-40
Gray tint indicates areas in which only
landmark buildings are shown



ROUTES USUALLY TRAVELED
HARD IMPROVED SURFACES
OTHER SURFACE IMPROVEMENTS
1940
② U. S. ROUTE
③ STATE ROUTE
BRIDGEPORT, N. J.-PA.
N3945-W7515/7.5

USGS LIBRARY - RESTON
3 1818 00256378 9