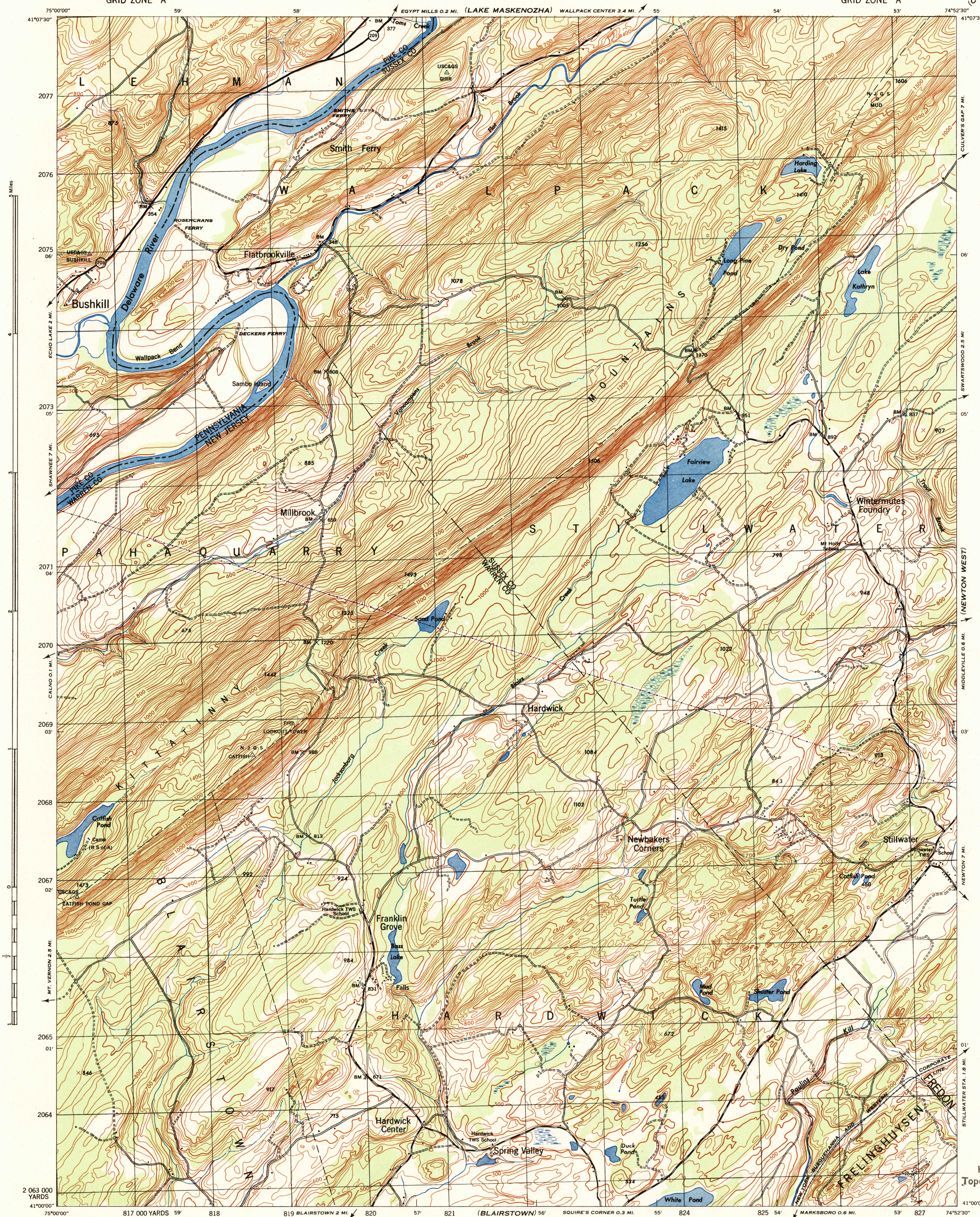


(CULVERS GAP)



First Edition 1943
Prepared under the direction of the Chief of Engineers
U. S. Army 1942
Topography by Fairchild Aerial Surveys, Inc.
Los Angeles, California
By Stereophotogrammetric Process.
Control by U. S. Coast and Geodetic Survey
and Fairchild Aerial Surveys, Inc.
Aerial photography by Fairchild Aerial Surveys, Inc.
Polyconic Projection, North American Datum 1927

Dependable hard surface, heavy-duty road.
Secondary, hard surface, all-weather road.
Dirt road.
State Route.
More than two lanes indicated by note along road with tick at point of change.

ROAD CLASSIFICATION 1943

U. S. Route
State Route
3 LANE | 4 LANE

Scale 1:31,680

1000 500 0 1000 2000 Yards

CONTOUR INTERVAL 20 FEET
DATUM IS MEAN SEA LEVEL

THOUSAND YARD GRID COMPUTED FROM "GRID SYSTEM FOR PROGRESSIVE MAPS
IN THE U. S. - ZONE A - U. S. C. & G. S. SPECIAL PUBLICATION NO. 58"
THE LAST THREE DIGITS OF THE GRID NUMBERS ARE OMITTED

NOTE: OFFICERS USING THIS MAP WILL HAVE HEREON CORRECTIONS AND ADDITIONS WHICH COME
TO THEIR ATTENTION AND MAIL DIRECT TO THE CHIEF OF ENGINEERS, WASHINGTON, D. C.

APPROXIMATE MEAN
DECLINATION 1942
ANNUAL MAGNETIC CHANGE 0'

USGS
Historical File
Topographic Division

FLATBROOKVILLE, N. J.
N4100-W7452.5/7.5

FILE COPY
Inspection and Editing