

NEW JERSEY
GLADSTONE QUADRANGLE
GRID ZONE "A"

WAR DEPARTMENT
CORPS OF ENGINEERS, U. S. ARMY

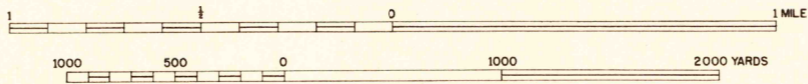
NEW JERSEY
GLADSTONE QUADRANGLE
GRID ZONE "A"



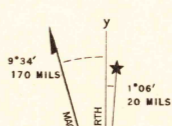
Prepared under the direction of the Chief of Engineers
U. S. Army 1942
Topography by Fairchild Aerial Surveys, Inc.
Los Angeles, California
By Stereophotogrammetric Process
and Fairchild Aerial Surveys, Inc.
Control by U. S. Coast and Geodetic Surveys
Aerial photography by Fairchild Aerial Surveys, Inc.
Polyconic Projection, North American Datum 1927

ROAD CLASSIFICATION
Dependable hard-surface, heavy-duty road. Loose surface graded, dry weather road. U. S. Route 160
Secondary, hard-surface, all-weather road. Unimproved road. State Route 30
More than two lanes indicated by note along road with tick at point of change. 3 LANE 1 LANE

SCALE 1:31680



CONTOUR INTERVAL 20 FEET
DATUM IS MEAN SEA LEVEL
THOUSAND YARD GRID COMPUTED FROM GRID SYSTEM FOR PROGRESSIVE MAPS
IN THE U. S. ZONE A U. S. C. & G. S. SPECIAL PUBLICATION NO. 59
THE LAST THREE DIGITS OF THE GRID NUMBERS ARE OMITTED
NOTE: OFFICERS USING THIS MAP WILL WANT PERSON CORRECTIONS AND ADDITIONS WHICH COME
TO THEIR ATTENTION AND MAIL DIRECT TO "THE CHIEF OF ENGINEERS, WASHINGTON, D. C."



GLADSTONE, N. J.
N4037.5-W7437.5/7.5

USGS
HISTORICAL FILE
TOPOGRAPHIC DIVISION