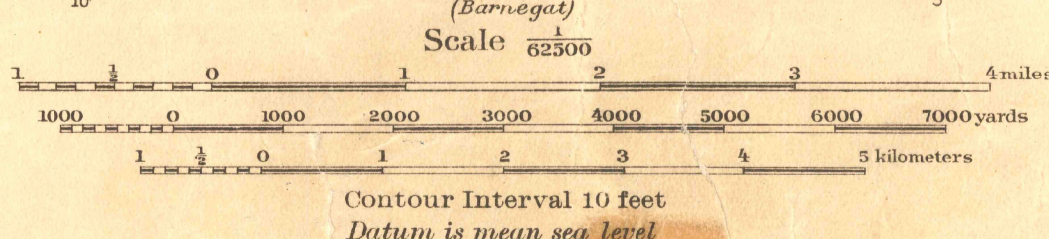


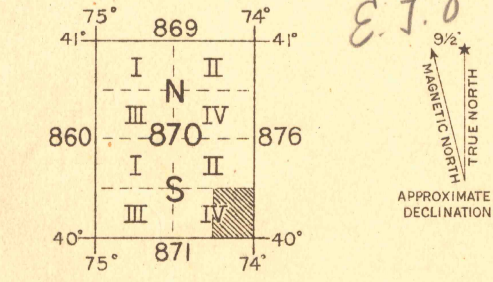


Base map from U. S. G. S. engravings.
Surveyed in 1884.
Corrections and additions by
Department Engineer, Eastern Department.
Soundings expressed in feet and referred to mean
low water, are from U.S.C. & G.S. Chart. No. 121
Additional field work and compilation under the direction
of Col. W. M. Black, Corps of Engineers, U. S. A.,
Department Engineer, Eastern Department.
Nov. 1913
Additional field work under the immediate supervision of
1st. Lieut. P. H. Herman, C.A.C., U. S. A.



NOTE: OFFICERS USING THIS MAP WILL MARK HEREON CORRECTIONS AND ADDITIONS WHICH COME
TO THEIR ATTENTION AND MAIL DIRECT TO 'THE CHIEF OF ENGINEERS, WASHINGTON, D.C.'

Central Map Reproduction Plant, Engineer School, Washington Barracks, D.C.
1919



ASBURY PARK
New Jersey