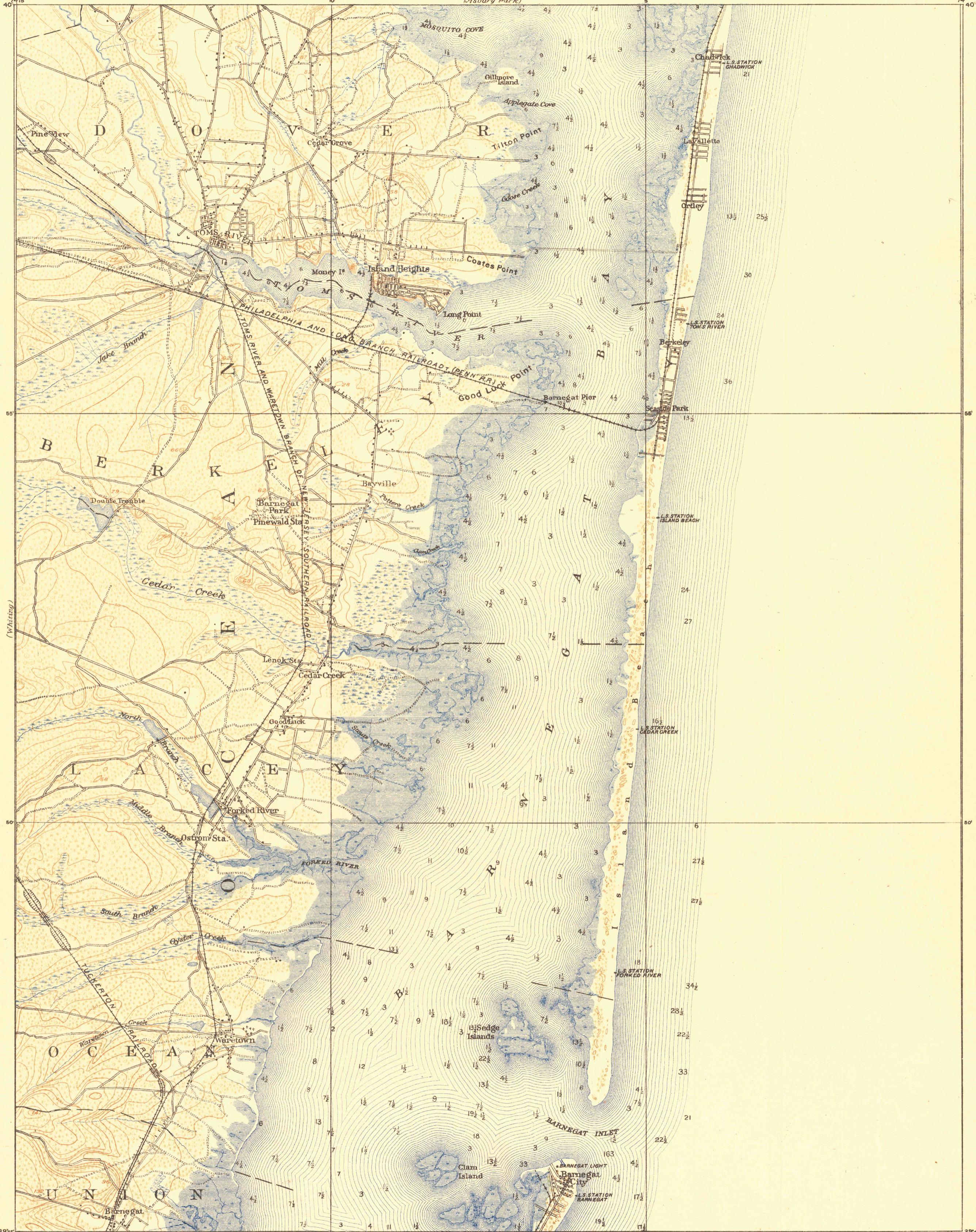
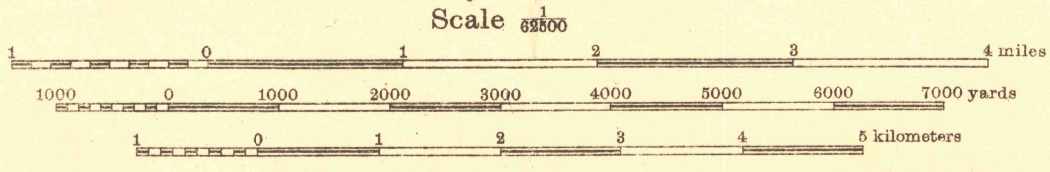


MADE BY U.S.G.S. 1884

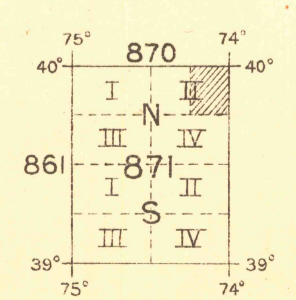


Base map from U. S. G. S. engravings.
Corrections and additions by
Department Engineer, Eastern Department.
Soundings expressed in feet and referred to mean
low water, are from U. S. C. & G. S. Chart, No. 1216.
Additional field work and compilation under the direction
of Col. Amos Stickney, Corps of Engineers, U. S. A.
Chief Engineer Officer, Atlantic Division.
Additional field work under the immediate supervision of
2nd. Lieut. C. S. Blakely, Artillery Corps, U. S. A.



Contour Interval 10 feet
Datum is mean sea level

NOTE: OFFICERS USING THIS MAP WILL MARK HEREON CORRECTIONS AND ADDITIONS WHICH COME
TO THEIR ATTENTION AND MAIL DIRECT TO THE CHIEF OF ENGINEERS, WASHINGTON, D. C.



APPROXIMATE MEAN
DECLINATION 1921

BARNEGAT

N.J.