

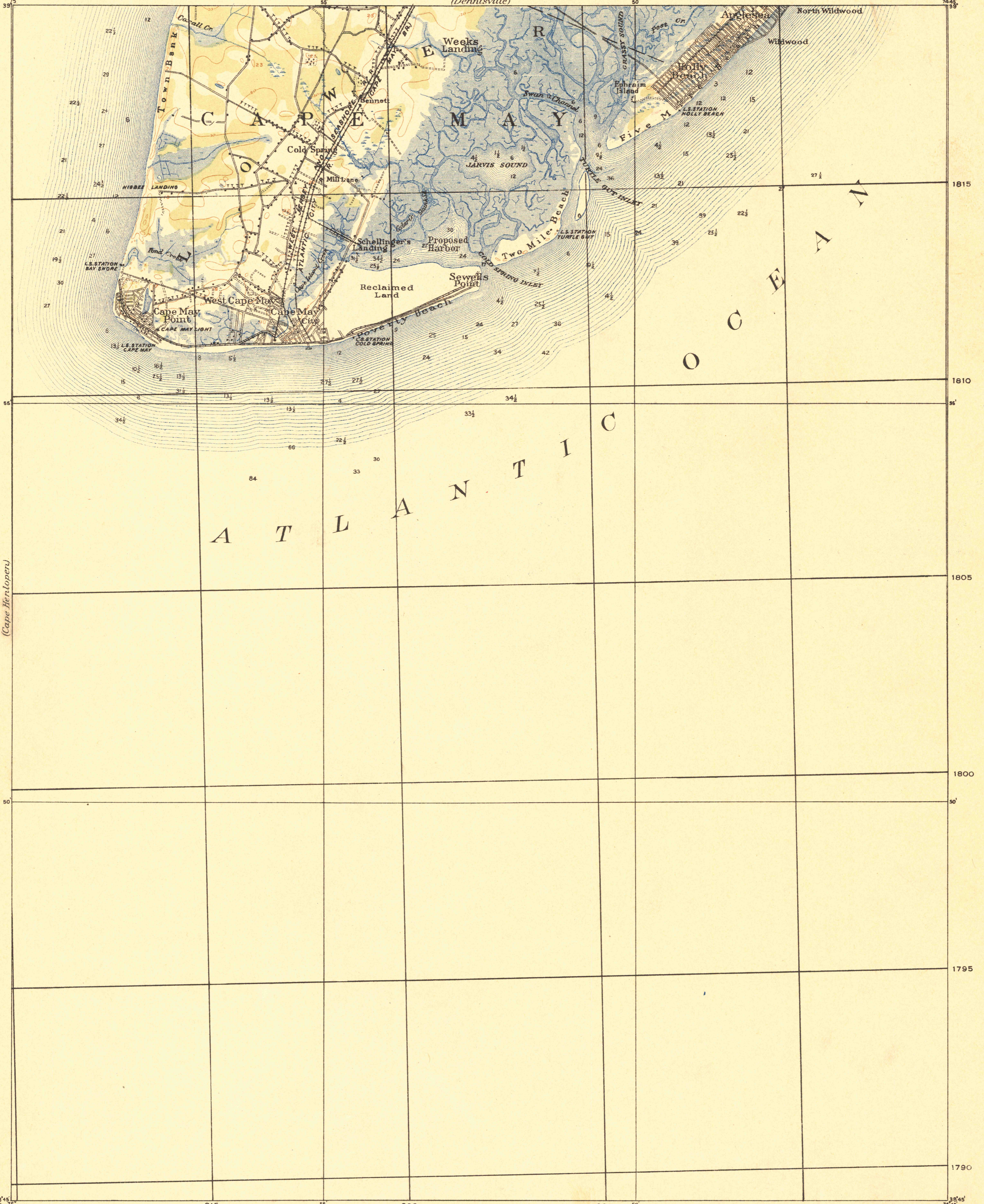
(Vineyard)

CORPS OF ENGINEERS, U. S. ARMY  
TACTICAL MAP

871a-N-I-W/2  
(Dennisville)

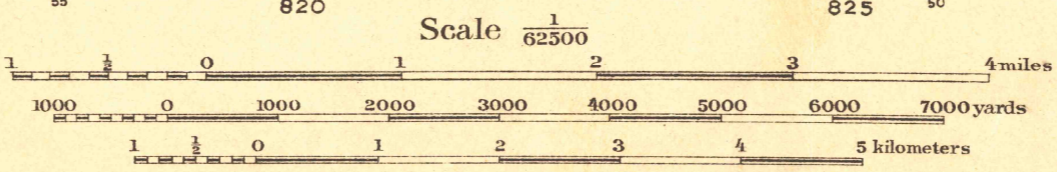
NEW JERSEY  
CAPE MAY QUADRANGLE  
GRID ZONE "A"

(Sea Isle)



Triangulation by the U. S. Coast and Geodetic Survey.  
 Topography by the Geological Survey of New Jersey, surveyed in 1884.  
 Additional field work and compilation under the direction of Colonel Amos Stickney, Corps of Engineers, U. S. Army, Department Engineer, Atlantic Division.  
 Additional field work under the immediate supervision of 2nd Lieut. C. S. Blakely, Artillery Corps, U. S. A. May 15, 1906.  
 Soundings expressed in feet and referred to mean low water are from U. S. C. & G. S. Chart No. 1219.

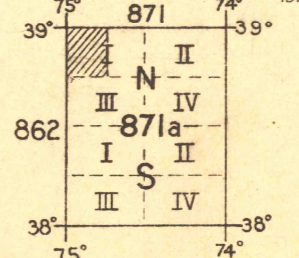
Reprint E. R. P. 1921



FIVE THOUSAND YARD GRID COMPUTED FROM "GRID SYSTEM FOR PROGRESSIVE MAPS IN THE U. S." ZONE A, U. S. C. & G. S. SPECIAL PUBLICATION NO. 59. (THE LAST THREE DIGITS OF THE GRID NUMBERS ARE OMITTED)

NOTE: OFFICERS USING THIS MAP WILL MARK HEREON CORRECTIONS AND ADDITIONS WHICH COME TO THEIR ATTENTION AND MAIL DIRECT TO "THE CHIEF OF ENGINEERS, WASHINGTON, D. C."

Central Map Reproduction Plant, Engineer School, Washington Barracks, D. C. 1918



APPROXIMATE MEAN DECLINATION 1921  
 TRUE NORTH

CAPE MAY

NJ

*Areas shown on index map Sept 6/21*

FILE COPY  
 MAP INFORMATION OFFICE