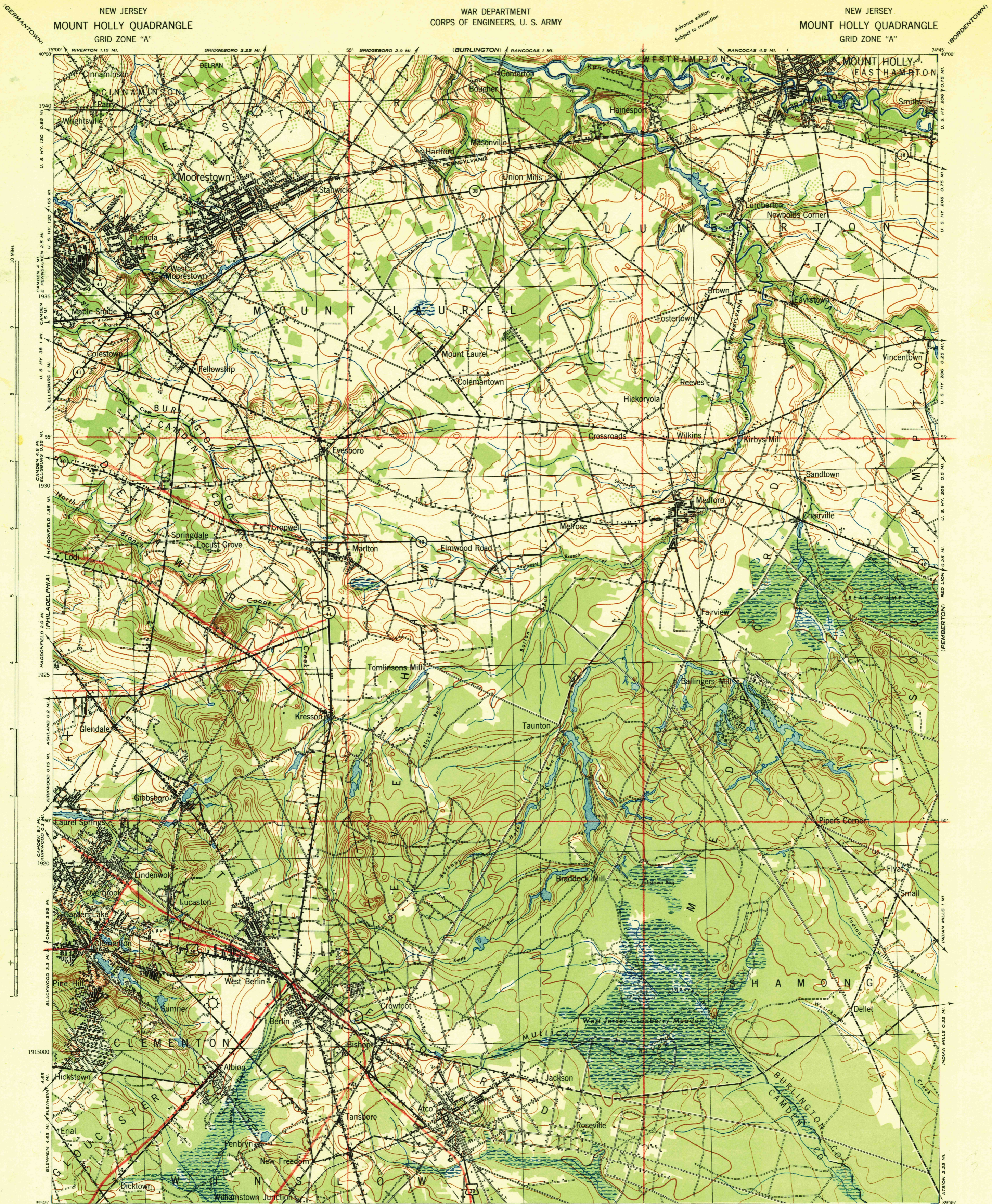


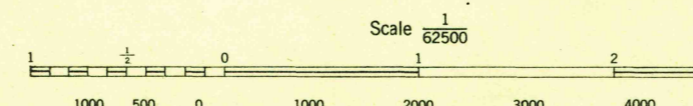
NEW JERSEY  
MOUNT HOLLY QUADRANGLE  
GRID ZONE "A"

WAR DEPARTMENT  
CORPS OF ENGINEERS, U. S. ARMY

NEW JERSEY  
MOUNT HOLLY QUADRANGLE  
GRID ZONE "A"



Work Projects Administration, O.P. 165-2 26-68, Washington, D. C.  
Prepared under the direction of the Chief of Engineers, U. S. Army, 1941.  
Base map from U. S. G. S. engravings.  
Planimetric compilation from aerial photos, A. A. A. Dept. of Agriculture, 1937,  
by Army Map Service, U. S. Army, Washington, D. C.  
Polyconic Projection, North American Datum.



ROAD CLASSIFICATION  
Dependable hard surface, heavy-duty road  
Secondary hard surface, all-weather road  
Loose surface graded, dry weather road  
Unimproved road  
U. S. Route  
State Route  
More than two lanes indicated by note along road with tick at point of change

**HISTORICAL FILES**  
(DO NOT REMOVE)

**HISTORICAL FILES**  
(DO NOT REMOVE)

CONTOUR INTERVAL 10 FEET  
DATUM IS MEAN SEA LEVEL  
FIVE THOUSAND YARD GRID COMPUTED FROM GRID SYSTEM FOR PROGRESSIVE MAPS  
IN THE U. S. ZONE A, U. S. G. S. SPECIAL PUBLICATION NO. 519  
THE LAST THREE DIGITS OF THE GRID NUMBERS ARE OMITTED  
NOTE: OFFICERS USING THIS MAP WILL MAKE THEIR OWN CORRECTIONS AND ADDITIONS WHICH COME  
TO THEIR ATTENTION AND WILL REPORT TO THE CHIEF OF ENGINEERS, WASHINGTON, D. C.

ARMY MAP SERVICE, U. S. ARMY, WASHINGTON, D. C. 1933  
MOUNT HOLLY, N. J.  
N3945-W7445/15

FILE COPY  
Not to be Removed From Files