

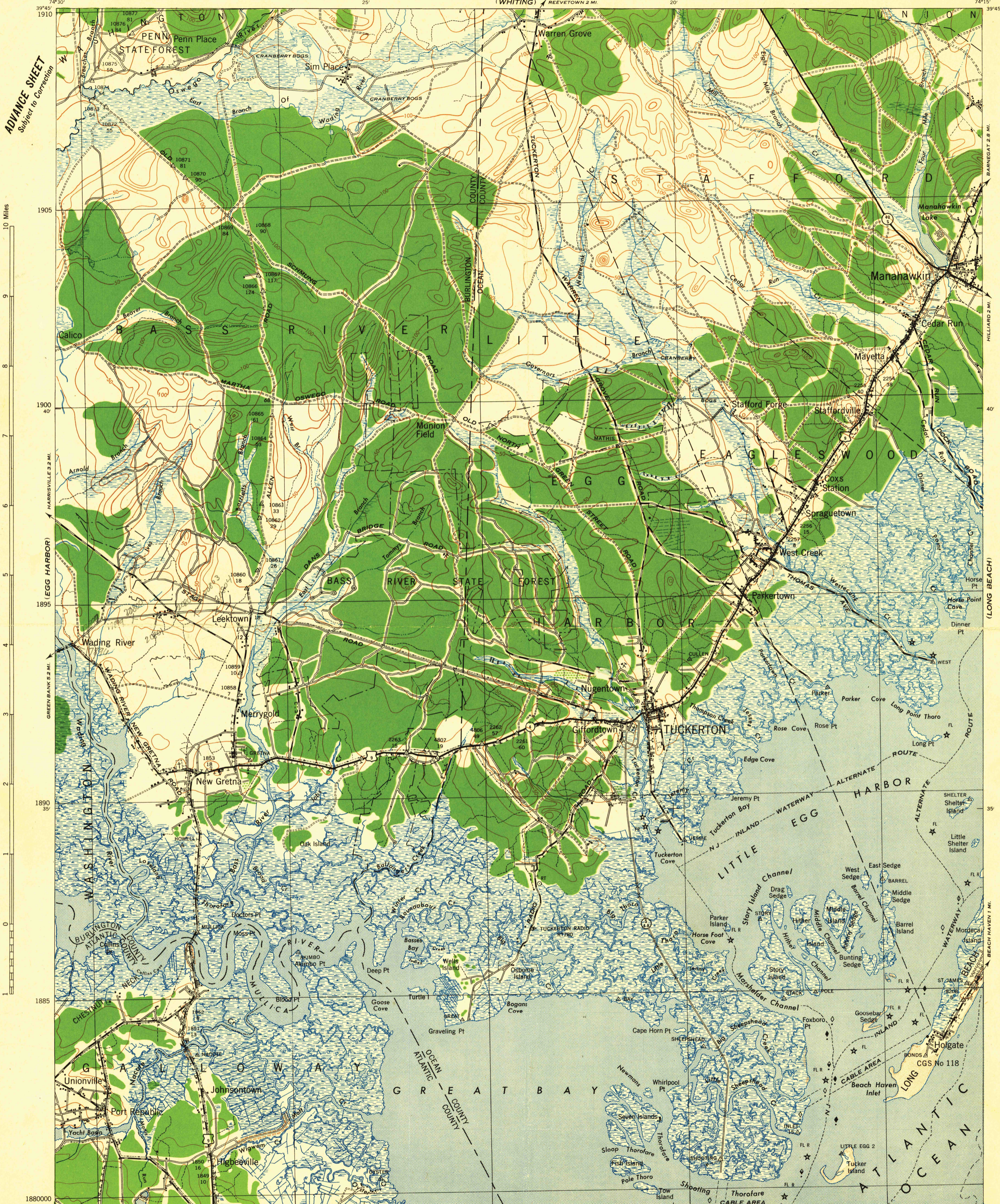
TUCKERTON QUADRANGLE

WAR DEPARTMENT
CORPS OF ENGINEERS, U. S. ARMY

TUCKERTON QUADRANGLE

GRID ZONE "A"

GRID ZONE "A"



ADVANCE SHEET
Subject to Correction

10 Miles

HARRISVILLE 3.2 MI.

EGG HARBOR

GREENBANK 5.2 MI.

1890

1895

1890

1885

1880

1885

1880000

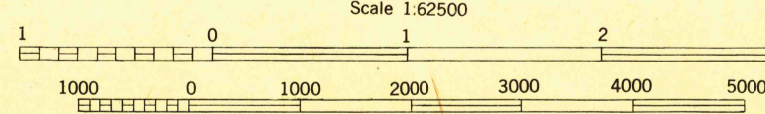
PLEASANTVILLE

30th Engineer Battalion, U.S. Army, Direction of Chief of Engineers.
Works Projects Administration, O. P. 165-2-97-45, New York, N. Y.
Surveyed by U.S.G.S., U.S.C. & G.S., 1932-37, and New Jersey G.C.S., 1935-38.
Revision by 30th Engineer Battalion, from Tandem T-3A photographs.
Photography by 1st Photographic Squadron, Air Corps, U.S. Army, 1940.
Polyconic Projection, North American, 1927 Datum.

ROAD CLASSIFICATION
Main Highway
Graded earth, gravel and stone
Unimproved

U.S. Route
State Route

CONTOUR INTERVAL 10 FEET—DATUM IS MEAN SEA LEVEL (1929 ADJ.)
NOTE: OFFICERS USING THIS MAP WILL MARK HEREON CORRECTIONS AND ADDITIONS WHICH COME TO THEIR ATTENTION AND MAIL DIRECT TO 'THE CHIEF OF ENGINEERS, WASHINGTON, D. C.'



HISTORICAL FILES
(DO NOT REMOVE)

TUCKERTON, N. J.
N3930-W7415/15

GRID TABLE, U.S.C. & G.S. SPECIAL PUBLICATION NO. 99
LET THREE DIGITS OF THE GRID NUMBERS ARE OMITTED
30TH ENGINEER BATTALION REPRODUCTION PLANT
FORT BELVOIR, VA., 1942