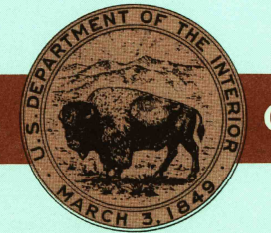


30 X 60 MINUTE QUADRANGLE SHOWING

- Contours and elevations in meters
- Highways, roads and other manmade structures
- Water features
- Woodland areas
- Geographic names



GEOLOGICAL SURVEY

1979

Produced by the United States Geological Survey in cooperation with the Bureau of Land Management. Compiled from USGS 1:24 000 and 1:62 500-scale topographic maps dated 1952-1971. Planimetry revised from aerial photographs taken 1975-1977 and other source data. Revised information not field checked. Map edited 1979.

Projection and 10 000-meter grid, zone 13, Universal Transverse Mercator. 25 000-foot grid ticks based on New Mexico coordinate system, central and west zones. 1927 North American Datum. To place on the predicted North American Datum 1983 move the projection lines 2 meters south and 52 meters east.

There may be private inholdings within the boundaries of the National or State reservations shown on this map. Where omitted, land lines have not been established or are not shown because of insufficient data.

CONTOUR INTERVAL 50 METERS  
SUPPLEMENTARY CONTOUR INTERVAL 25 METERS  
NATIONAL GEODETIC VERTICAL DATUM OF 1929

ELEVATIONS SHOWN TO THE NEAREST METER

THIS MAP COMPLIES WITH NATIONAL MAP ACCURACY STANDARDS

CONVERSION TABLE		DECLINATION DIAGRAM		ADJOINING MAPS		
Meters	Feet	Magnetic Declination		1	2	3
1	3.2808	10° 15' N		1	2	3
2	6.5617	10° 15' N		4	5	6
3	9.8425	10° 15' N		7	8	9
4	13.1234	10° 15' N		10	11	12
5	16.4043	10° 15' N		13	14	15
6	19.6852	10° 15' N		16	17	18
7	22.9661	10° 15' N		19	20	21
8	26.2470	10° 15' N		22	23	24
9	29.5279	10° 15' N		25	26	27
10	32.8088	10° 15' N		28	29	30

UTM grid convergence (GN) and 1979 magnetic declination magnetic at center of map. Diagram is approximate.

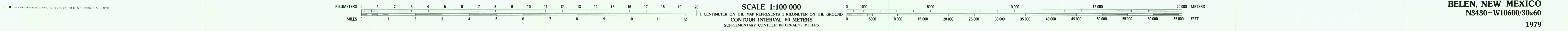
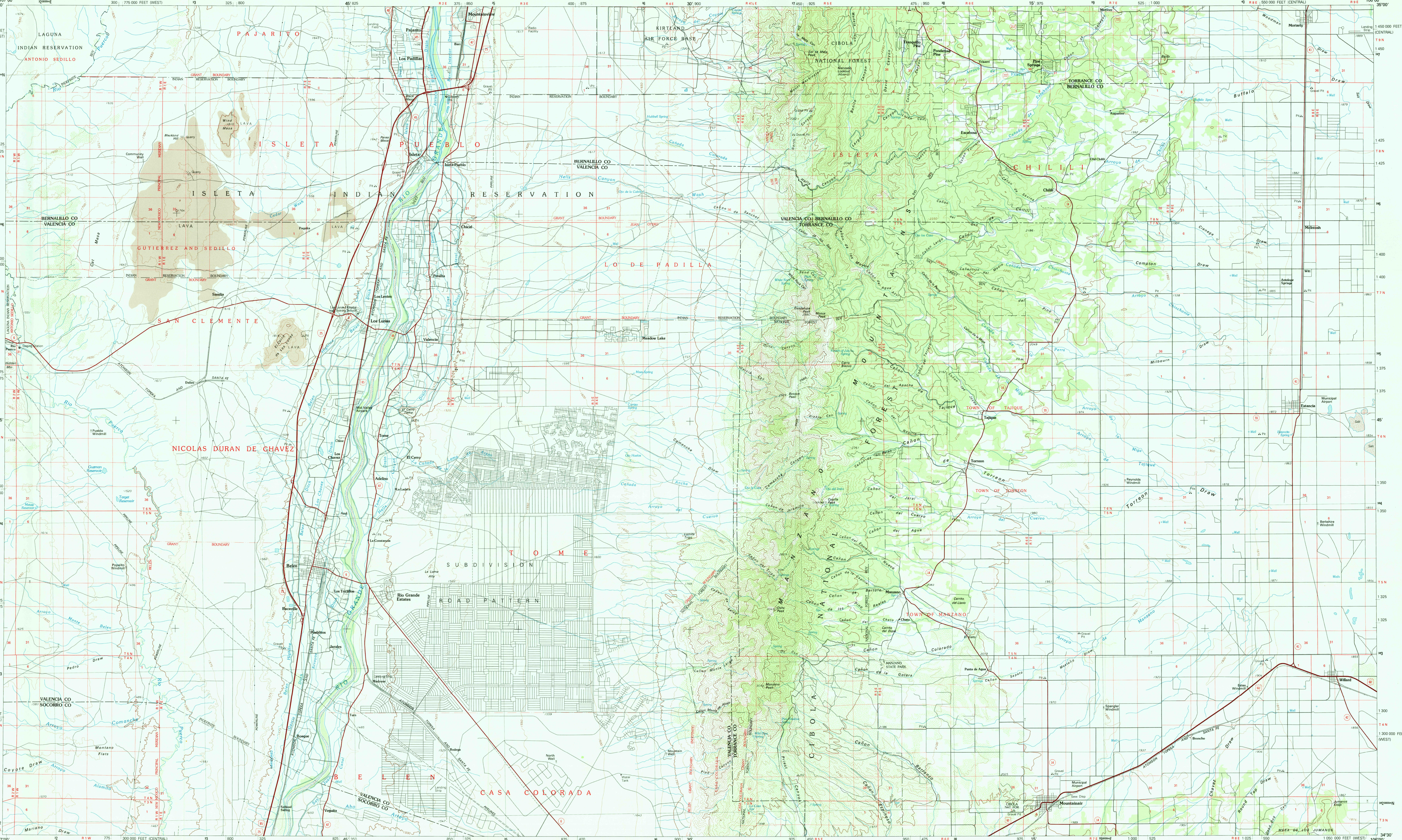
To convert meters to feet multiply by 3.2808  
To convert feet to meters multiply by 0.3048

FOR SALE BY U.S. GEOLOGICAL SURVEY, DENVER, COLORADO 80225 OR RESTON, VIRGINIA 22092

Topographic Map Symbols

- Primary highway, hard surface
- Secondary highway, hard surface
- Light duty road, principal street, hard or improved surface
- Other road or street, road
- Route marker: Interstate, U.S. State
- Railroad: standard gage, narrow gage
- Bridge, overpass, underpass
- Tunnel: road, railroad
- Built up area, locality, abutment
- Airport: landing field, landing strip
- National boundary
- State boundary
- County boundary
- National or State reservation boundary
- Land grant boundary
- U.S. public lands survey: range, township; section
- Range, township; section line: protracted
- Power transmission line: pipeline
- Built up area, locality, abutment
- Cemetery: building
- Windmill; water well; spring
- Mine shaft: adit or cave; mine, quarry; gravel pit
- Campground; picnic area, U.S. location monument
- Ruin; cliff dwelling
- Dotted surface: strip mine, lava, sand
- Contours: index, intermediate, supplementary
- Bathymetric contours: index, intermediate
- Stream, lake: perennial; intermittent
- Rapids, large and small; falls, large and small
- Area to be submerged; marsh, swamp
- Land subject to controlled inundation; woodland
- Scrub; mangrove
- Orchard; vineyard

A pamphlet describing topographic maps is available on request



BELEN, NEW MEXICO  
N3430-W10600/30x60  
1979