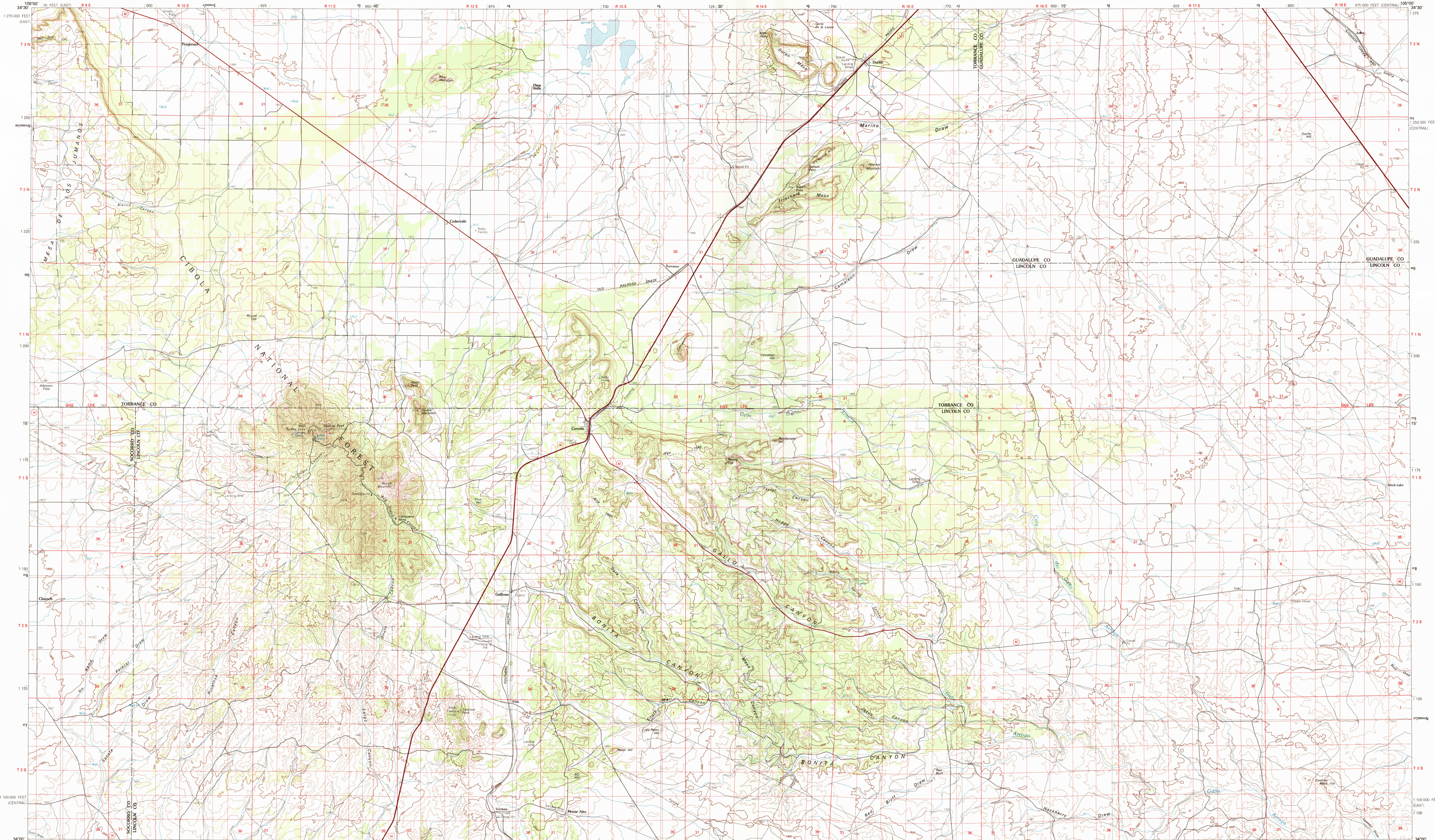


CORONA, NEW MEXICO

30X60 MINUTE SERIES (TOPOGRAPHIC)



USGS
science for a changing world

1:100 000-scale metric topographic map of
Corona
NEW MEXICO

30 X 60 MINUTE QUADRANGLE SHOWING

- Contours and elevations in meters
- Highways, roads and other manmade structures
- Water features
- Woodland areas
- Geographic names

GEOLOGICAL SURVEY

1980

Produced by the United States Geological Survey in cooperation with the Bureau of Land Management. Compiled from USGS 1:250,000-scale topographic map advance materials. Map dated 1980.

Projection and 10 000-meter grid, zone 13 Universal Transverse Mercator 25 000-foot grid ticks based on New Mexico coordinate system, central and east zones. 1927 North American datum. To place on the predicted North American Datum 1983 move the projection lines 4 meters south and 50 meters east. There may be private landholdings within the boundaries of the National or State reservations shown on this map.

CONTOUR INTERVAL 20 METERS
NATIONAL GEODETIC VERTICAL DATUM OF 1929

THIS MAP COMPLIES WITH NATIONAL MAP ACCURACY STANDARDS

FOR SALE BY U.S. GEOLOGICAL SURVEY,
P.O. BOX 25286, DENVER, COLORADO, 80225

CONVERSION TABLE		DECLINATION DIAGRAM		ADJOINING MAPS		
Meters	Feet	GN	MN	1	2	3
1	3.2808			4	5	
2	6.5617			5	6	
3	9.8425			6	7	8
4	13.1234					
5	16.4042					
6	19.6850					
7	22.9659					
8	26.2467					
9	29.5275					
10	32.8084					

To convert meters to feet multiply by 3.2808
To convert feet to meters multiply by 0.3048

UTM grid convergence (GN) and 1983 magnetic declination (MN) at center of map. Diagram is approximate.

1	Bellevue
2	Flagstaff
3	Flagstaff
4	Flagstaff
5	Fort Sumner
6	Owens Mountains
7	Roswell
8	Salt Creek



RECEIVED
DEC 3 2000
USGS WMD
HISTORICAL MAP ARCHIVES

Topographic Map Symbols

Primary highway, hard surface	
Secondary highway, hard surface	
Light duty road, principal street, hard or improved surface	
Other road or street, road	
Route marker, interstate; U. S. State	
Railroad, standard gage; narrow gage	
Bridge, overpass; underpass	
Tunnel, road; railroad	
Build-up area, quarry, excavation	
Airport, landing field, landing strip	
National boundary	
State boundary	
County boundary	
National or State reservation boundary	
Land grant boundary	
U. S. public lands survey; range, township; section	
Range, township; section line; protracted	
Power transmission line; pipeline	
Over, dam with lock	
Cemetery, building	
Windmill; water well; spring	
Mine shaft; adit or cave; mine, quarry; gravel pit	
Campground; picnic area; U. S. location monument	
Range, cliff dwelling	
Distorted surface; strip mine, lava, sand	
Contours: index; intermediate; supplementary	
Bathymetric contours: index; intermediate	
Stream, lake, perennial; intermittent	
Runoff, lake and small; bay, lagoon and small	
Area to be submerged; marsh, swamp	
Land subject to controlled inundation; woodland	
Sand; mangrove	
Drainage, viaduct	