

This sheet must not be taken from the files without an order from the Chief Topographic Engineer.

DEPARTMENT OF THE INTERIOR  
U. S. GEOLOGICAL SURVEY

299-S-II AND IV

Advance sheet  
Subject to correction

NEW MEXICO  
ABIQUIU QUADRANGLE

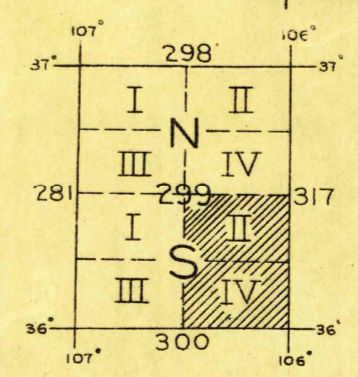
DEC 3 1924



Topography: Carson Forest from map by Forest Service remainder, reconnaissance by N.H. Darton 1914, 1918. Elevations mostly from Wheeler Survey and aneroid. Some work mainly from Land Office plats.

TRUE NORTH  
MAGNETIC NORTH  
APPROXIMATE MEAN DECLINATION, 1918

Scale: 25,000  
Miles  
Contour interval 100 feet  
(Datum is mean Sea Level)



U. S. BOARD ON GEOGRAPHICAL NAMES  
Accession .....  
Class .....  
Date .....  
ABIQUIU, N.M.