

DEPARTMENT OF THE INTERIOR
U. S. GEOLOGICAL SURVEY

NEW MEXICO
CERRO VERDE QUADRANGLE

Advance sheet
Subject to correction

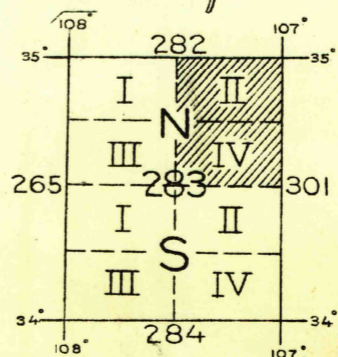


Topography: Rapid reconnaissance by N.H. Darton, 1917

Scale 1:25,000
Miles

Contour interval 100 feet
Datum is mean sea level

TRUE NORTH
MAGNETIC NORTH
APPROXIMATE MEAN
DECLINATION 1917



BOARD OF SURVEYS & MAPS
RECEIVED
JUL 1 - 1932
Map Information Office

CERRO VERDE, N.M.

3214 W
LADRONES PEAK
U.S. GEOLOGICAL SURVEY
Map 1075-221