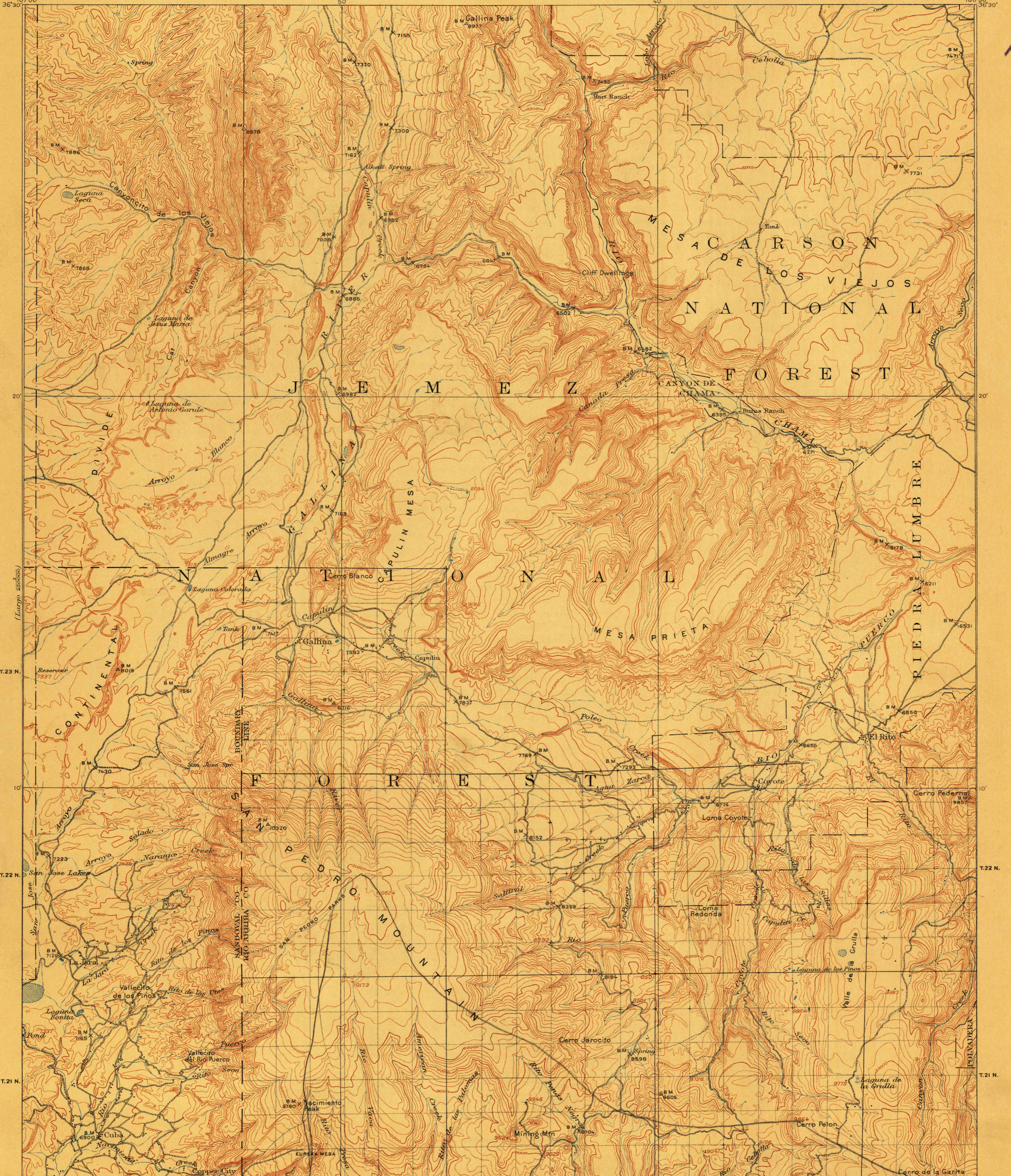


TOPOGRAPHY

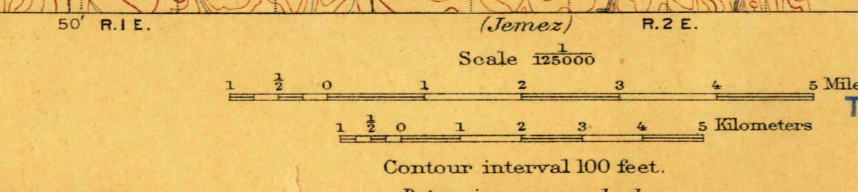
U.S. GEOLOGICAL SURVEY
GEORGE OTIS SMITH, DIRECTOR

NEW MEXICO
GALLINA QUADRANGLE



FILE

36°00' 107°00'
E. C. Barnard, Geographer in charge.
Topography by Gilbert Young, D.F.C. Moon, J.E. Blackburn,
Lee Morrison, and S.T. Penick.
Control by H.L. Baldwin, Jr.
Surveyed in 1906-1907.



USGS
Historical File
Topographic Division

DIAGRAM OF TOWNSHIP

6	5	4	3	2	1
7	8	9	10	11	12
13	14	15	16	17	18
19	20	21	22	23	24
25	26	27	28	29	30
31	32	33	34	35	36

Engraved Sept. 1908 by U.S.G.S.
Edition of Oct. 1909.

GALLINA, N. Mex.