

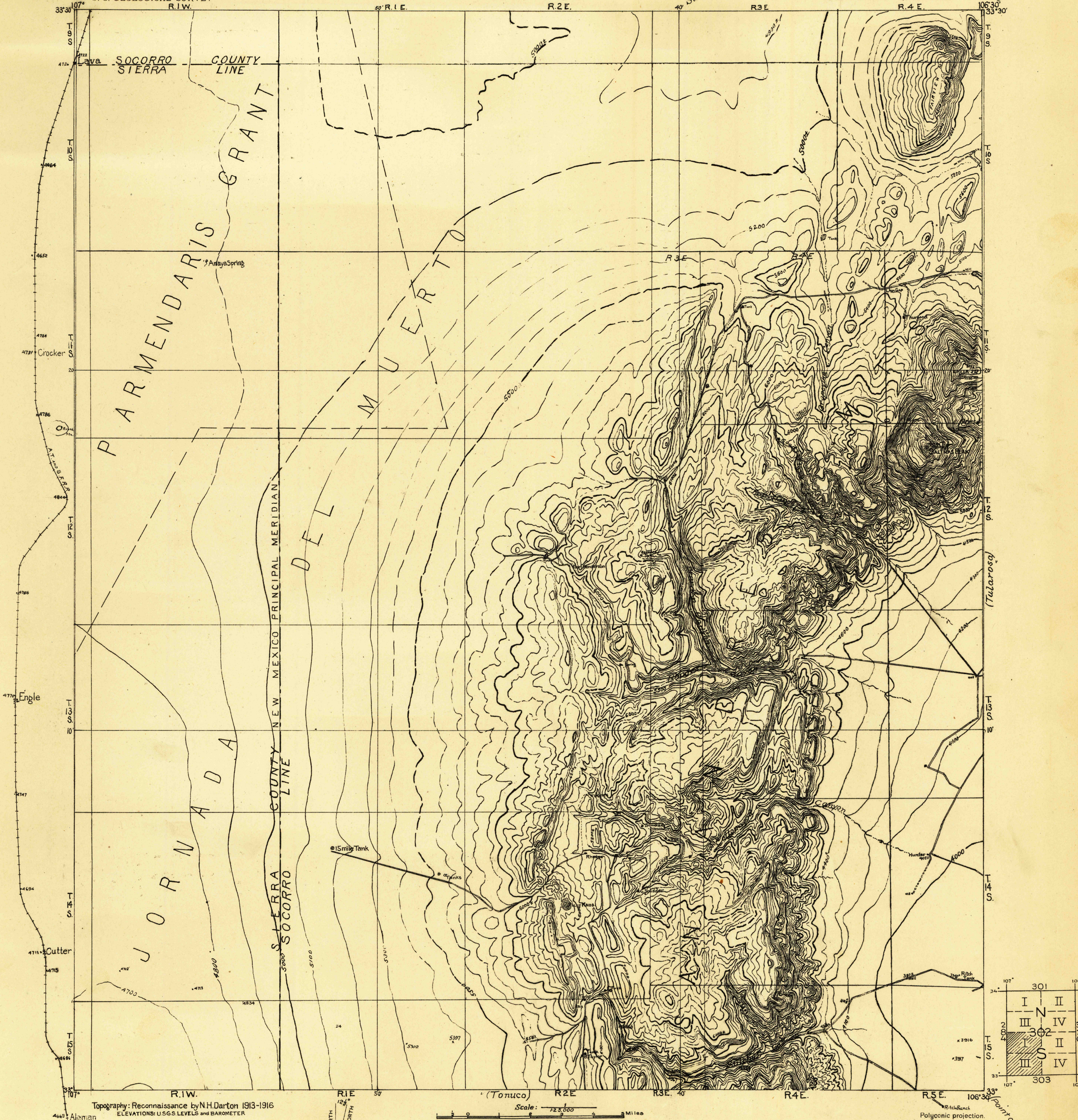
Advance sheet
Subject to correction

NEW MEXICO
SALINAS PEAK QUADRANGLE

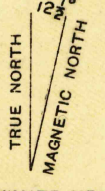
DEPARTMENT OF THE INTERIOR
U. S. GEOLOGICAL SURVEY

302-S-I AND III

(Oscura Peak)



Topography: Reconnaissance by N.H. Darton 1913-1916
ELEVATIONS: U.S.G.S. LEVELS and BAROMETER

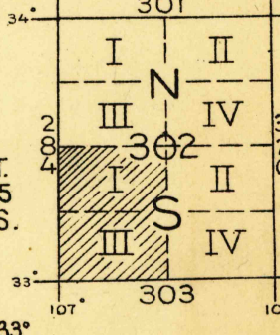


APPROXIMATE MEAN
DECLINATION 1918

Scale: 1:72,500
Miles
Contour interval 100 feet
Datum is mean sea level.

USGS
Historical File
Topographic Division

SALINAS PEAK, N.M. ✓



Polygonic projection.
(Point of Sands)