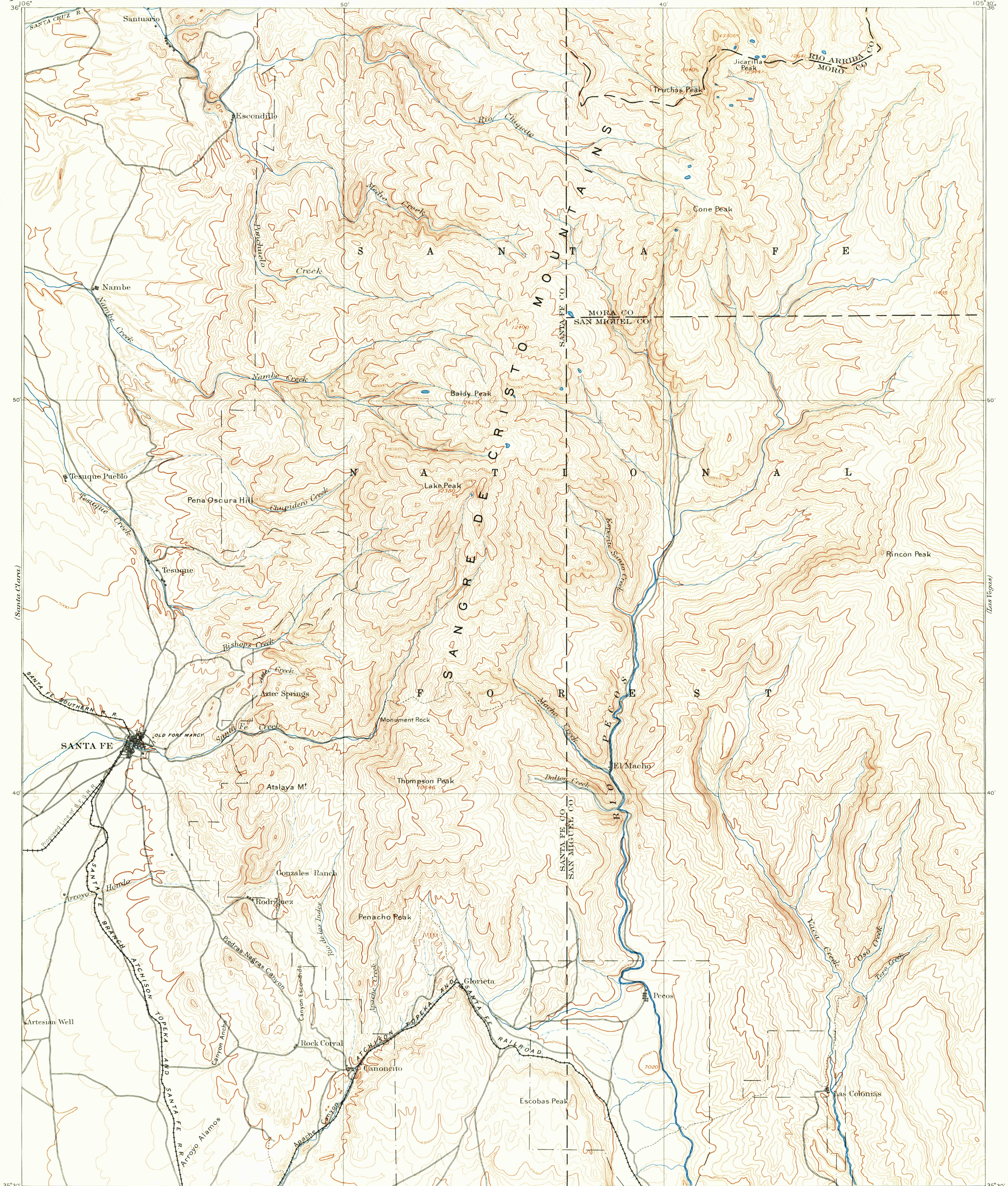
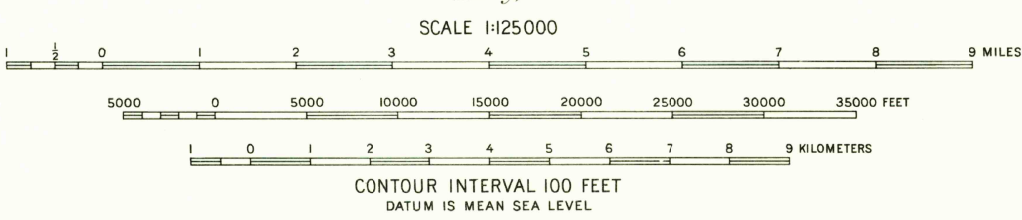


(San Juan Pueblo)
1:62,500



A. H. Thompson, Geographer.
A. P. Davis, Topographer in charge.
Triangulation by A. P. Davis.
Topography by A. P. Davis, W. W. Davis and C. C. Bassett.
Surveyed in 1888-9



INTERIOR—GEOLOGICAL SURVEY, WASHINGTON, D. C.—1963
MR 5739
Polyconic projection. 1927 North American datum

Surveyed by reconnaissance methods
USGS
Historical File
Topographic Division

SANTA FE, N. MEX.
N3530—W10530/30
1889

FOR SALE BY U. S. GEOLOGICAL SURVEY, DENVER 25, COLORADO OR WASHINGTON 25, D. C.
A FOLDER DESCRIBING TOPOGRAPHIC MAPS AND SYMBOLS IS AVAILABLE ON REQUEST

APR 2 1893

2165