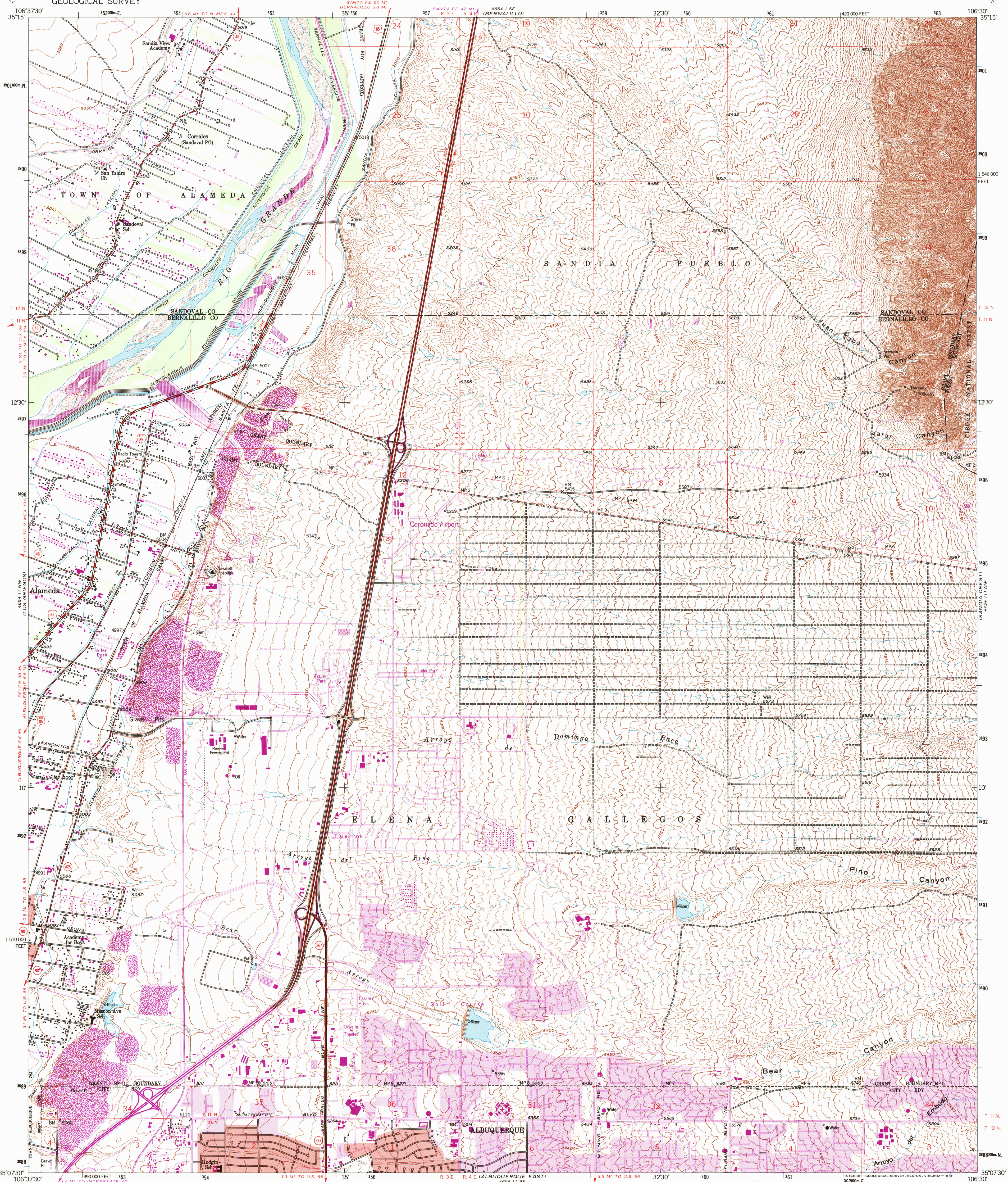
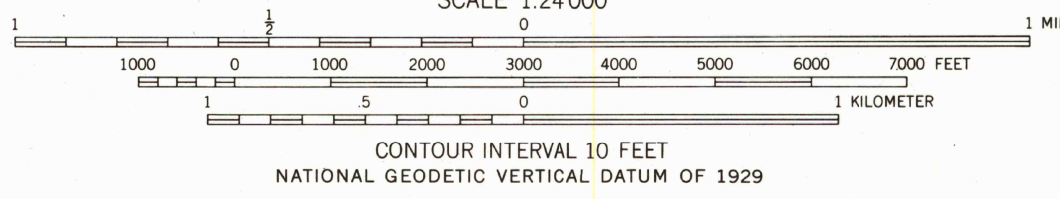
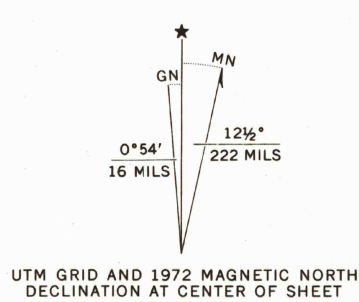


UNITED STATES
DEPARTMENT OF THE INTERIOR
GEOLOGICAL SURVEY

ALAMEDA QUADRANGLE
NEW MEXICO
7.5 MINUTE SERIES (TOPOGRAPHIC)

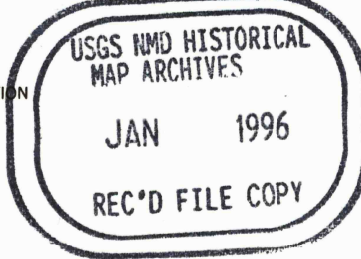


Mapped, edited, and published by the Geological Survey
Control by USGS and USC&GS
Culture and drainage in part compiled from aerial photographs
taken 1959. Topography by planetable surveys 1954. Revised 1960
Polyconic projection. 1927 North American datum
10,000-foot grid based on New Mexico coordinate system, central zone
1000-meter Universal Transverse Mercator grid ticks, zone 13, shown in blue
Red tint indicates areas in which only landmark buildings are shown
Areas covered by light-blue pattern are subject to controlled inundation
West boundary of Sandia Pueblo Grant adjacent to Rio Grande omitted
because of insufficient data
Revisions shown in purple compiled from aerial photographs
taken 1967 and 1972. This information not field checked
Purple tint indicates extension of urban areas



THIS MAP COMPLIES WITH NATIONAL MAP ACCURACY STANDARDS
FOR SALE BY U. S. GEOLOGICAL SURVEY, DENVER, COLORADO 80225, OR RESTON, VIRGINIA 22092
A FOLDER DESCRIBING TOPOGRAPHIC MAPS AND SYMBOLS IS AVAILABLE ON REQUEST

ROAD CLASSIFICATION
Heavy-duty ——— Light-duty ———
Medium-duty ——— Unimproved dirt ———
Interstate Route U.S. Route State Route



ALAMEDA, N. MEX.
N3507.5-W10630/7.5
1960
PHOTOREVISED 1967 AND 1972
AMS 4654 II NE - SERIES V881

