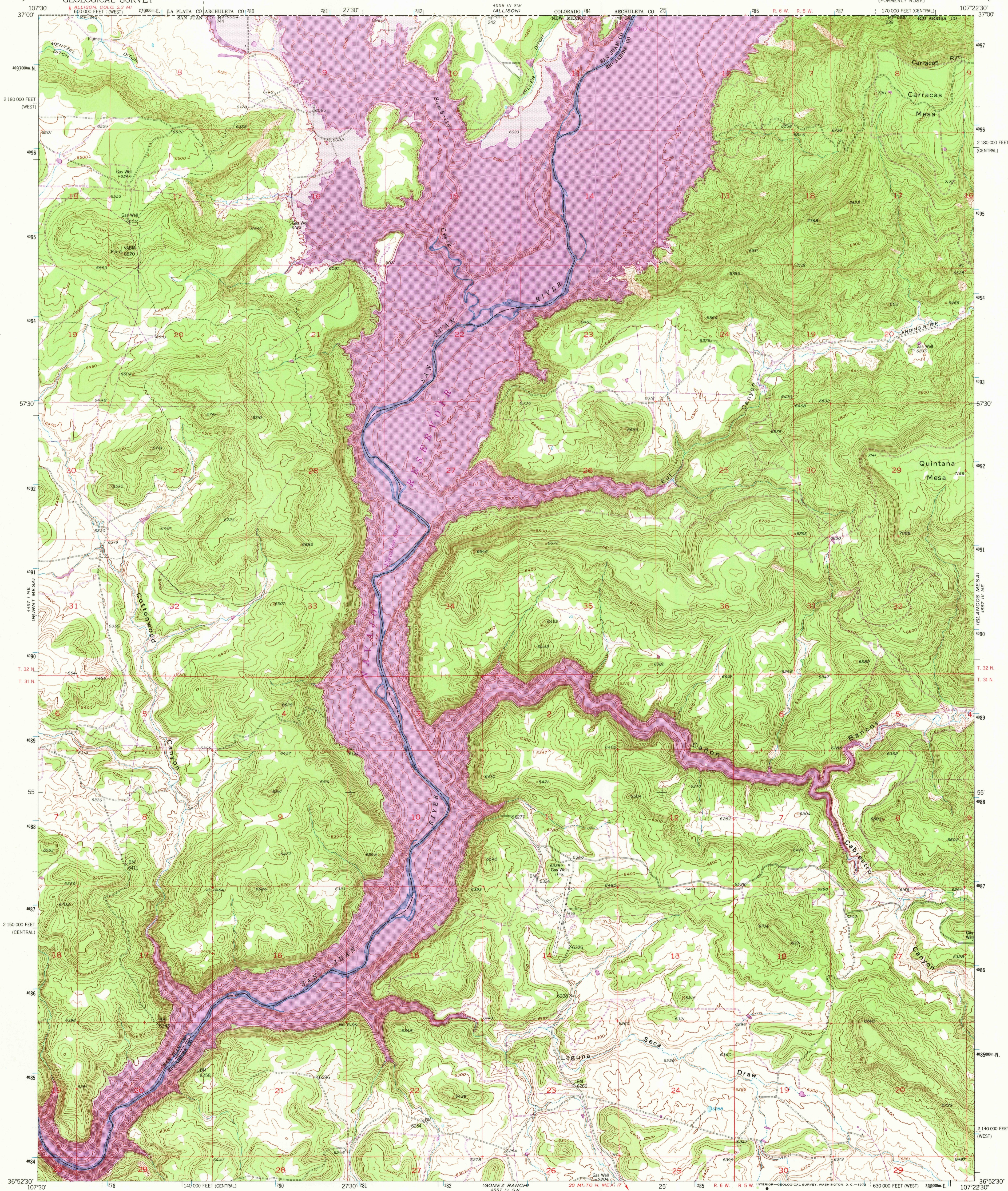
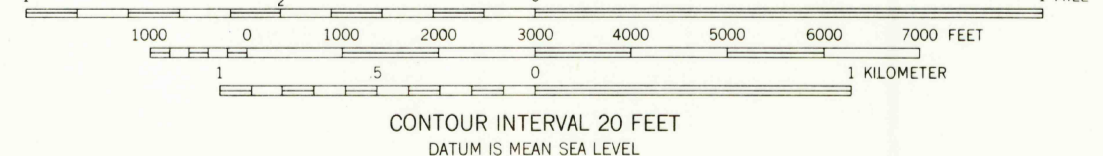
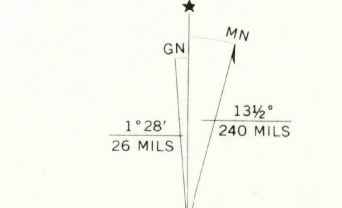


UNITED STATES  
DEPARTMENT OF THE INTERIOR  
GEOLOGICAL SURVEY

BANCOS MESA NW QUADRANGLE  
NEW MEXICO  
7.5 MINUTE SERIES (TOPOGRAPHIC)  
(FORMERLY ROSA)



Mapped, edited, and published by the Geological Survey  
Control by USGS and USC&GS  
Topography by photogrammetric methods from aerial photographs taken 1950. Field check 1954  
Polyconic projection. 1927 North American datum  
10,000-foot grid based on New Mexico coordinate system, central and west zones  
1000-meter Universal Transverse Mercator grid ticks, zone 13, shown in blue  
Revisions shown in purple compiled from aerial photographs taken 1971. This information not field checked  
Areas covered by dashed light purple pattern are subject to controlled inundation to 6101 feet



ROAD CLASSIFICATION  
Light duty ———— Unimproved dirt - - - - -

THIS MAP COMPLIES WITH NATIONAL MAP ACCURACY STANDARDS  
FOR SALE BY U. S. GEOLOGICAL SURVEY, DENVER, COLORADO 80225, OR WASHINGTON, D. C. 20242  
A FOLDER DESCRIBING TOPOGRAPHIC MAPS AND SYMBOLS IS AVAILABLE ON REQUEST

USGS  
HISTORICAL FILE  
TOPOGRAPHIC DIVISION

BANCOS MESA NW, N. MEX.  
(FORMERLY ROSA)  
N3652.5—W10722.5/7.5  
1954  
PHOTOREVISED 1971  
AMS 4557 IV NW—SERIES V881

FEB 22 1973  
2765