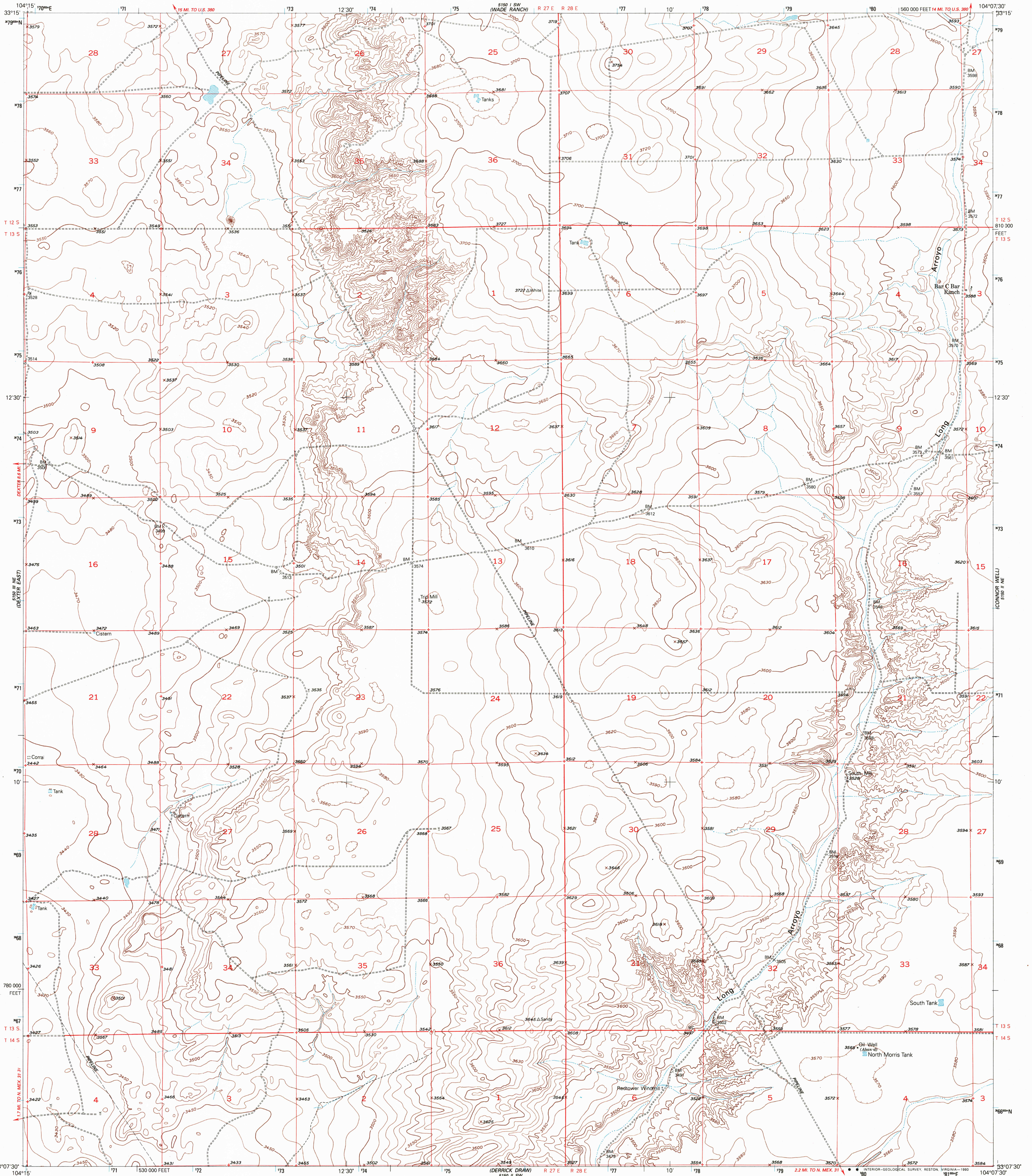


540 1/2 SE
6217000 N

UNITED STATES
DEPARTMENT OF THE INTERIOR
GEOLOGICAL SURVEY

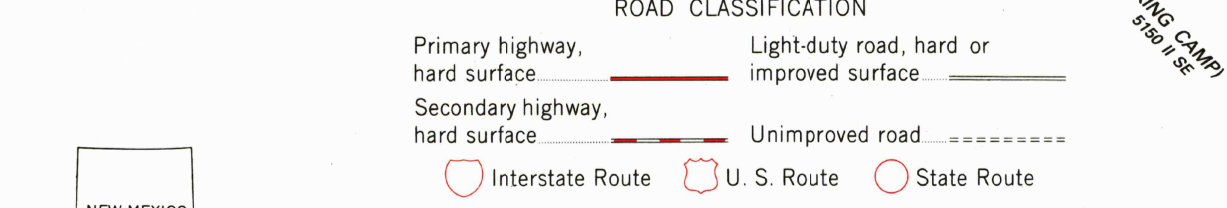
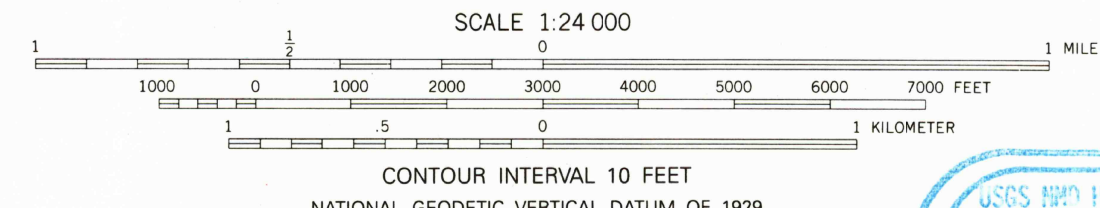
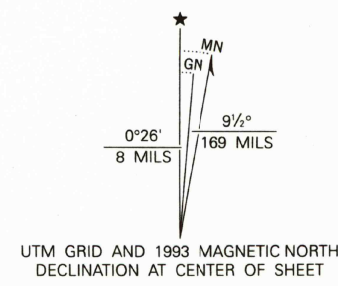
BAR C BAR RANCH QUADRANGLE
NEW MEXICO-CHAVES CO.
7.5 MINUTE SERIES (TOPOGRAPHIC)

710 1/2 SE
(MAGNETIC NORTH)



1/4 SECTION
540 1/2 SE

Produced by the United States Geological Survey
Control by USGS and NOS/NOAA
Compiled from aerial photographs taken 1947
Topography by plane-table surveys 1952
1927 North American Datum (NAD 27). Projection and
10,000-foot ticks: New Mexico Coordinate System, east zone
(Transverse Mercator)
Blue 1000 meter Universal Transverse Mercator ticks, zone 13
North American Datum of 1983 (NAD 83) is shown by dashed
corner ticks. The values of the shift between NAD 27 and NAD 83
for 7.5-minute intersections are given in USGS Bulletin 1875



THIS MAP COMPLIES WITH NATIONAL MAP ACCURACY STANDARDS
FOR SALE BY U.S. GEOLOGICAL SURVEY
DENVER, COLORADO 80225, OR RESTON, VIRGINIA 22092
A FOLDER DESCRIBING TOPOGRAPHIC MAPS AND SYMBOLS IS AVAILABLE ON REQUEST



BAR C BAR RANCH, N. MEX.
33104-B2-TF-024

1952

DMA 5150 11 NW-SERIES V881

1/4 SECTION
710 1/2 SE