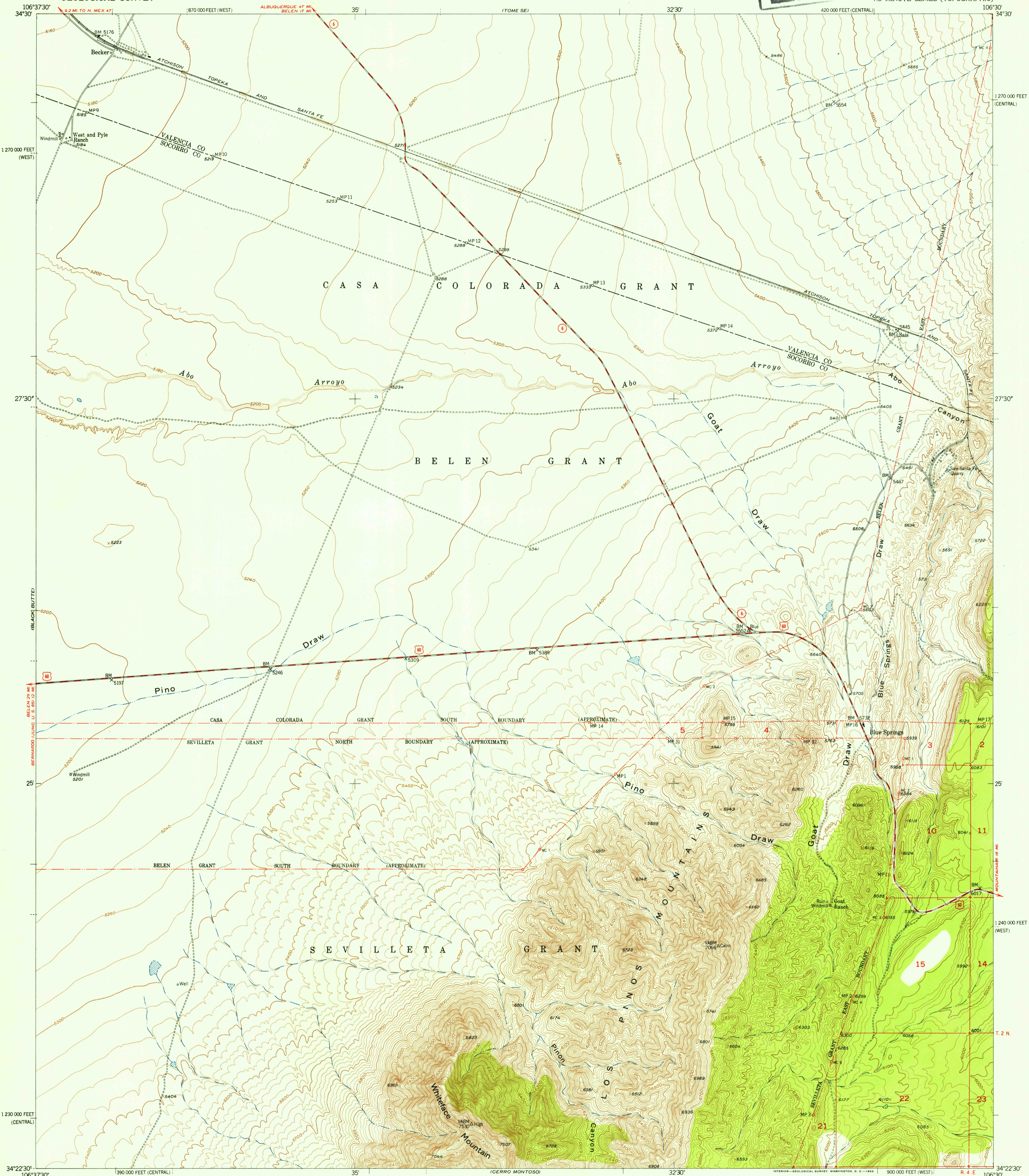
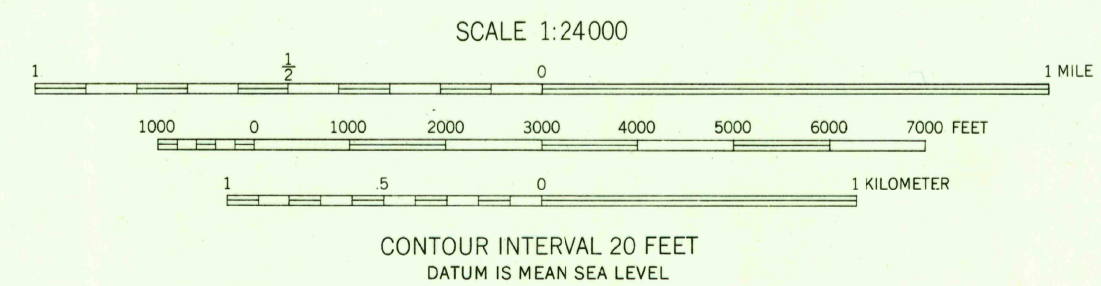
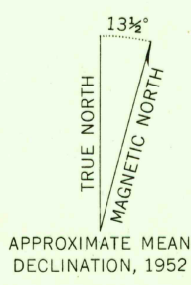


FILE COPY
Inspection and Editing



Mapped, edited, and published by the Geological Survey
Control by USGS and USC&GS
Topography from aerial photographs by multiplex methods
and by plane-table surveys 1952. Aerial photographs taken 1947
Polyconic projection. 1927 North American datum
10,000-foot grid based on New Mexico coordinate system,
central and west zones



USGS
Historical File
Topographic Division

ROAD CLASSIFICATION

Heavy-duty	4 LANE 16 LANE	Light-duty	2 LANE 16 LANE
Medium-duty	4 LANE 16 LANE	Unimproved dirt	-----
U. S. Route	⊠	State Route	○



FILE COPY
Inspection and Editing

BECKER, N. MEX.
N3422.5-W10630.7.5
1952