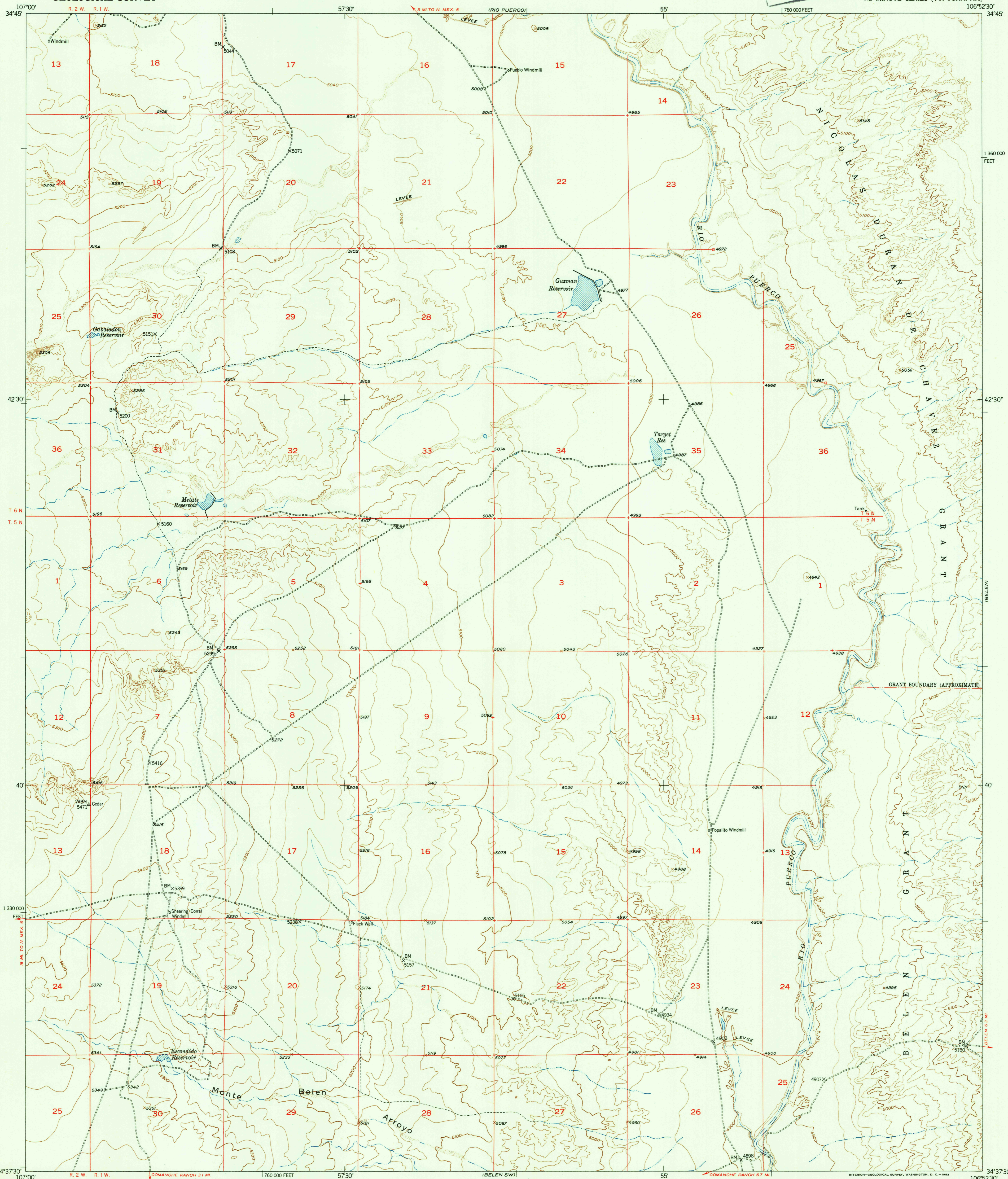
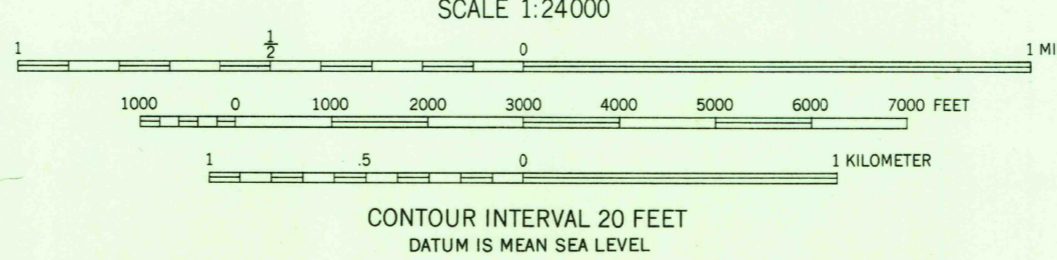


FILE COPY
Inspection and Editing



Mapped, edited, and published by the Geological Survey
Control by USGS and USC&GS
Topography from aerial photographs by multiplex methods
and by plane-table surveys 1952
Aerial photographs taken 1947
Polyconic projection, 1927 North American datum
10,000-foot grid based on New Mexico coordinate system,
west zone
Boundary line of Belen Grant and Nicolas Duran de Chavez Grant
is omitted in part because of insufficient data

TRUE NORTH
MAGNETIC NORTH
APPROXIMATE MEAN
DECLINATION, 1952



USGS
Historical File
Topographic Division

ROAD CLASSIFICATION
Heavy-duty 4 LANE 6 LANE Light-duty
Medium-duty 4 LANE 6 LANE Unimproved dirt
U.S. Route State Route



BELEN NW, N. MEX.
N3437.5-W10652.5/7.5
1952

FILE COPY
Inspection and Editing

MAR 18 1953