

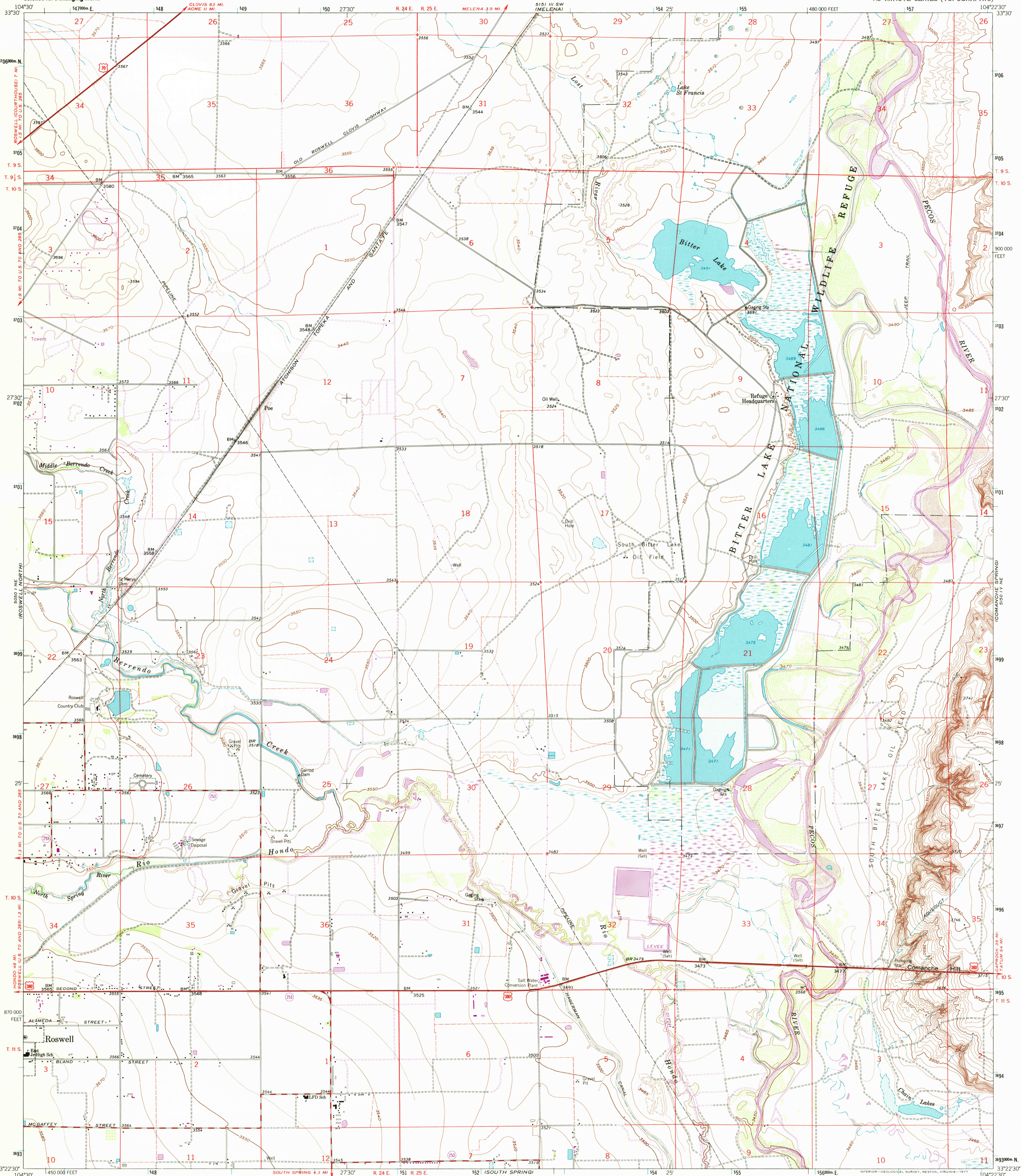
50° 11' E
104° 22' 30"



U.S. DEPARTMENT OF THE INTERIOR
U.S. GEOLOGICAL SURVEY

BITTER LAKE QUADRANGLE
NEW MEXICO-CHAVES CO.
7.5 MINUTE SERIES (TOPOGRAPHIC)

50° 11' E
104° 22' 30"



Mapped, edited, and published by the Geological Survey in cooperation with U.S. Corps of Engineers

Control by USGS and USC&GS

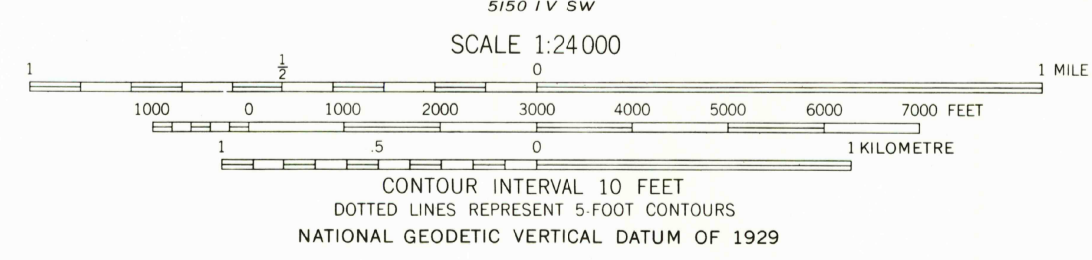
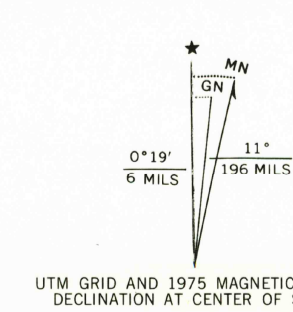
Planimetry by photogrammetric methods from aerial photographs taken 1961. Topography by planetable surveys 1950. Revised 1962

Polyconic projection. 1927 North American datum 10,000-foot grid based on New Mexico coordinate system, east zone 1000-metre Universal Transverse Mercator grid ticks, zone 13, shown in blue

Fine red dashed lines indicate selected fence lines

Area covered by dashed light-blue pattern is subject to controlled inundation

Revisions shown in purple compiled from aerial photographs taken 1975. This information not field checked



ROAD CLASSIFICATION

Heavy-duty	Light-duty
Medium-duty	Unimproved dirt
U.S. Route	State Route

RECEIVED
SEP 30 2000

USGS/NMID
HISTORICAL MAP ARCHIVES

BITTER LAKE, N. MEX.
N3322.5-W10422.5/7.5

1962
PHOTOREVISED 1975
AMS 5150 IV NW-SERIES V881

NEW MEXICO
QUADRANGLE LOCATION

ISSN 0-107-37010-9
9 780607 370102

THIS MAP COMPLIES WITH NATIONAL MAP ACCURACY STANDARDS
FOR SALE BY U.S. GEOLOGICAL SURVEY, P.O. BOX 25286, DENVER, COLORADO 80225
A FOLDER DESCRIBING TOPOGRAPHIC MAPS AND SYMBOLS IS AVAILABLE ON REQUEST

ROSWELL SOUTH
33° 22' 30"

ROSWELL NORTH
33° 30' 00"

ROSWELL SOUTH
33° 22' 30"

ROSWELL NORTH
33° 30' 00"