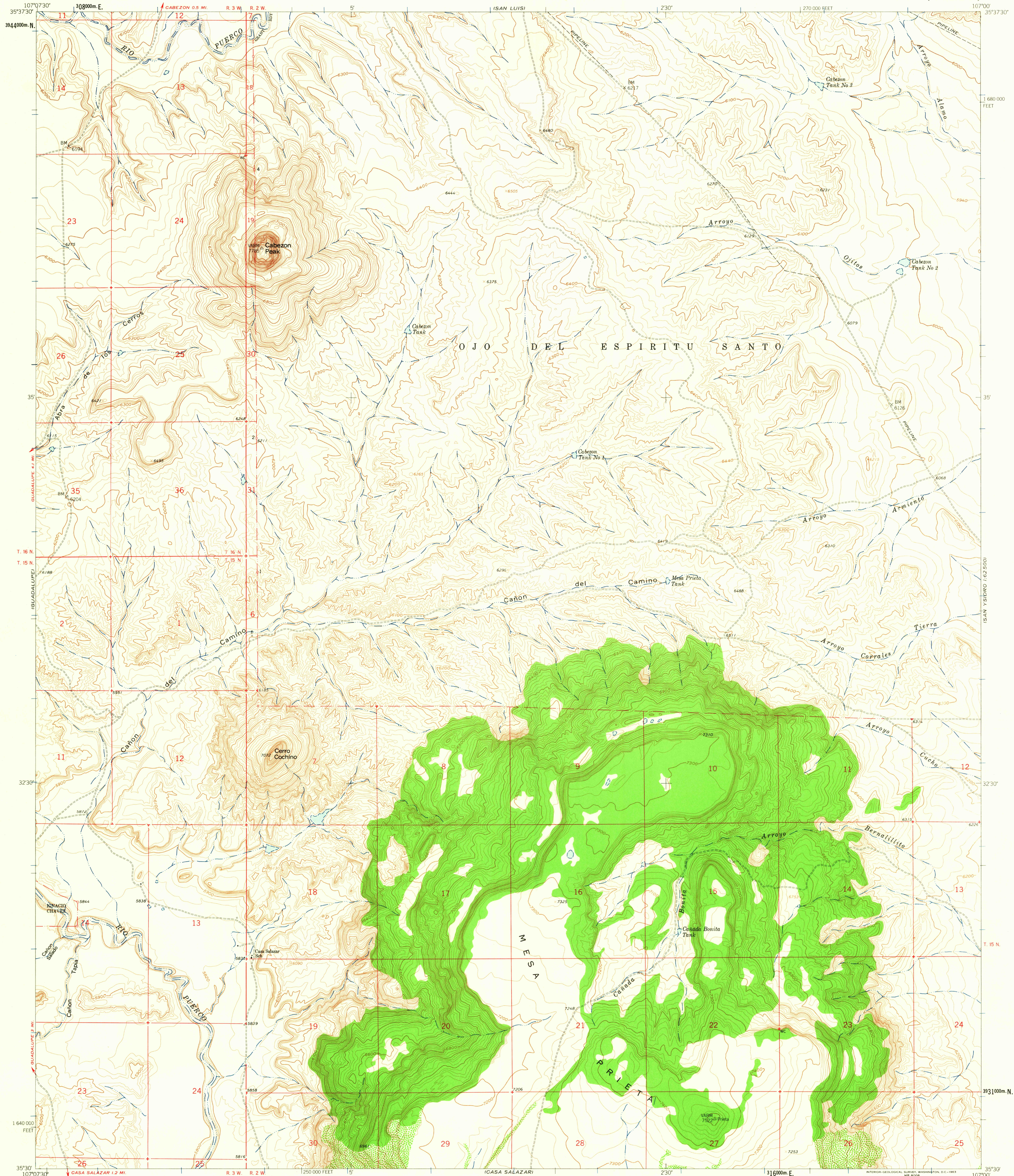


UNITED STATES  
DEPARTMENT OF THE INTERIOR  
GEOLOGICAL SURVEY

CABEZON PEAK QUADRANGLE  
NEW MEXICO-SANDOVAL CO.  
7.5 MINUTE SERIES (TOPOGRAPHIC)

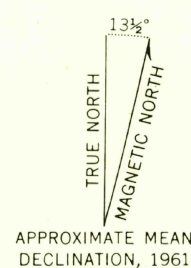


Mapped, edited, and published by the Geological Survey

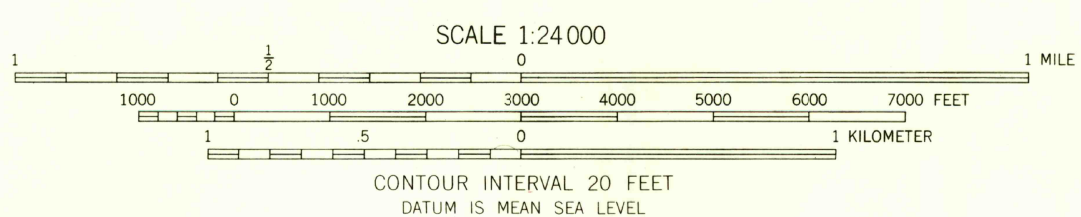
Control by USGS and USC&GS

Topography by photogrammetric methods from aerial  
photographs taken 1958. Field checked 1961

Polycyclic projection. 1927 North American datum  
10,000-foot grid based on New Mexico coordinate system, central zone  
1000-meter Universal Transverse Mercator grid ticks,  
zone 13, shown in blue



APPROXIMATE MEAN  
DECLINATION, 1961



CONTOUR INTERVAL 20 FEET  
DATUM IS MEAN SEA LEVEL



QUADRANGLE LOCATION

ROAD CLASSIFICATION  
Unimproved dirt

THIS MAP COMPLIES WITH NATIONAL MAP ACCURACY STANDARDS  
FOR SALE BY U.S. GEOLOGICAL SURVEY, DENVER 25, COLORADO OR WASHINGTON 25, D.C.  
A FOLDER DESCRIBING TOPOGRAPHIC MAPS AND SYMBOLS IS AVAILABLE ON REQUEST

USGS  
Historical File  
Topographic Division  
CABEZON PEAK, N. MEX.  
N3530-W10700/7.5  
1961

2110