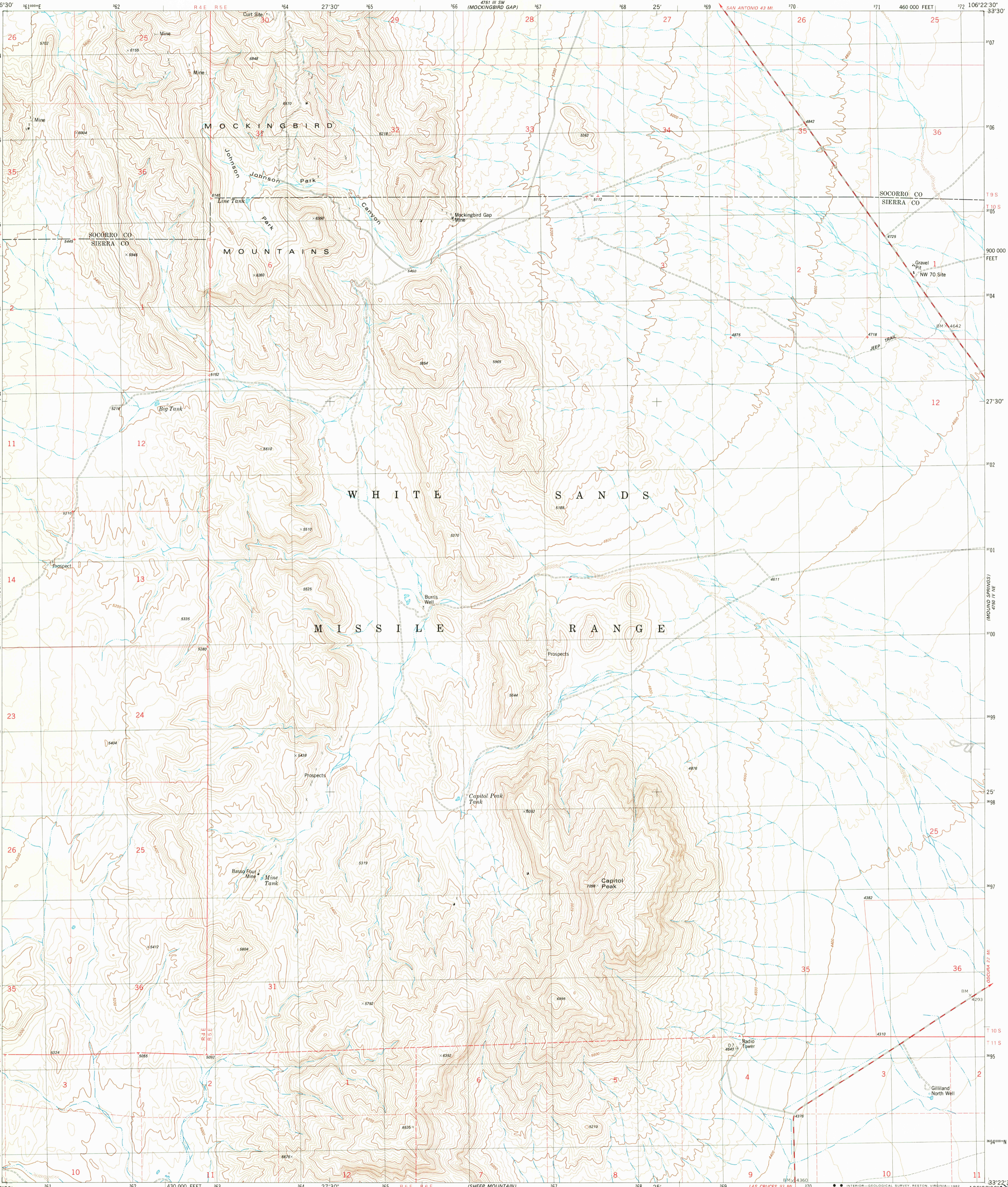


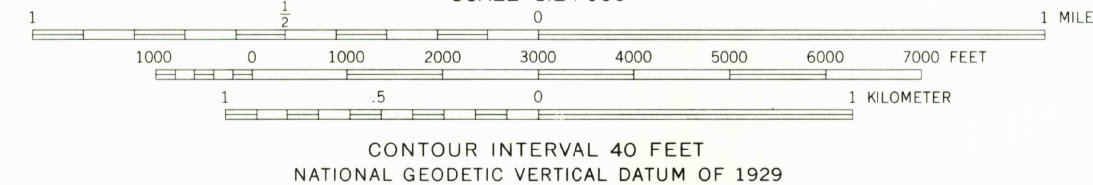
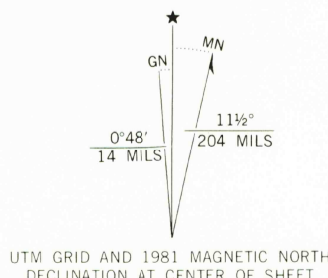


UNITED STATES  
DEPARTMENT OF THE INTERIOR  
GEOLOGICAL SURVEY

CAPITOL PEAK QUADRANGLE  
NEW MEXICO  
7.5 MINUTE SERIES (TOPOGRAPHIC)  
NW/4 CAPITOL PEAK 15' QUADRANGLE



Mapped, edited, and published by the Geological Survey  
Control by USGS, NOS/NOAA, and DMA  
Topography by photogrammetric methods from aerial photographs  
taken 1972. Field checked 1975. Map edited 1981  
Projection and 10,000-foot grid ticks: New Mexico  
coordinate system, central zone (transverse Mercator)  
1000-meter Universal Transverse Mercator grid, zone 13  
1927 North American datum  
To place on the predicted North American Datum 1983  
move the projection lines 5 meters south and  
51 meters east as shown by dashed corner ticks  
Certain land lines are omitted because of insufficient data  
There may be private inholdings within the boundaries of  
the National or State reservations shown on this map



ROAD CLASSIFICATION  
Primary highway, hard surface  
Secondary highway, hard surface  
Light-duty road, hard or improved surface  
Unimproved road  
Interstate Route  
U. S. Route  
State Route

CAPITOL PEAK, N. MEX.  
NW/4 CAPITOL PEAK 15' QUADRANGLE  
N3322.5-W10622.5/7.5  
1981  
DMA 4750 IV NW-SERIES V881

THIS MAP COMPLIES WITH NATIONAL MAP ACCURACY STANDARDS  
FOR SALE BY U. S. GEOLOGICAL SURVEY, DENVER, COLORADO 80225 OR RESTON, VIRGINIA 22092  
A FOLDER DESCRIBING TOPOGRAPHIC MAPS AND SYMBOLS IS AVAILABLE ON REQUEST

RETURN TO:  
USGS NMD HISTORICAL MAP ARCHIVES

MAY 13 1982  
CAPITOL PEAK 15' QUADRANGLE  
NW/4 SE  
MOCKINGBIRD GAP SE