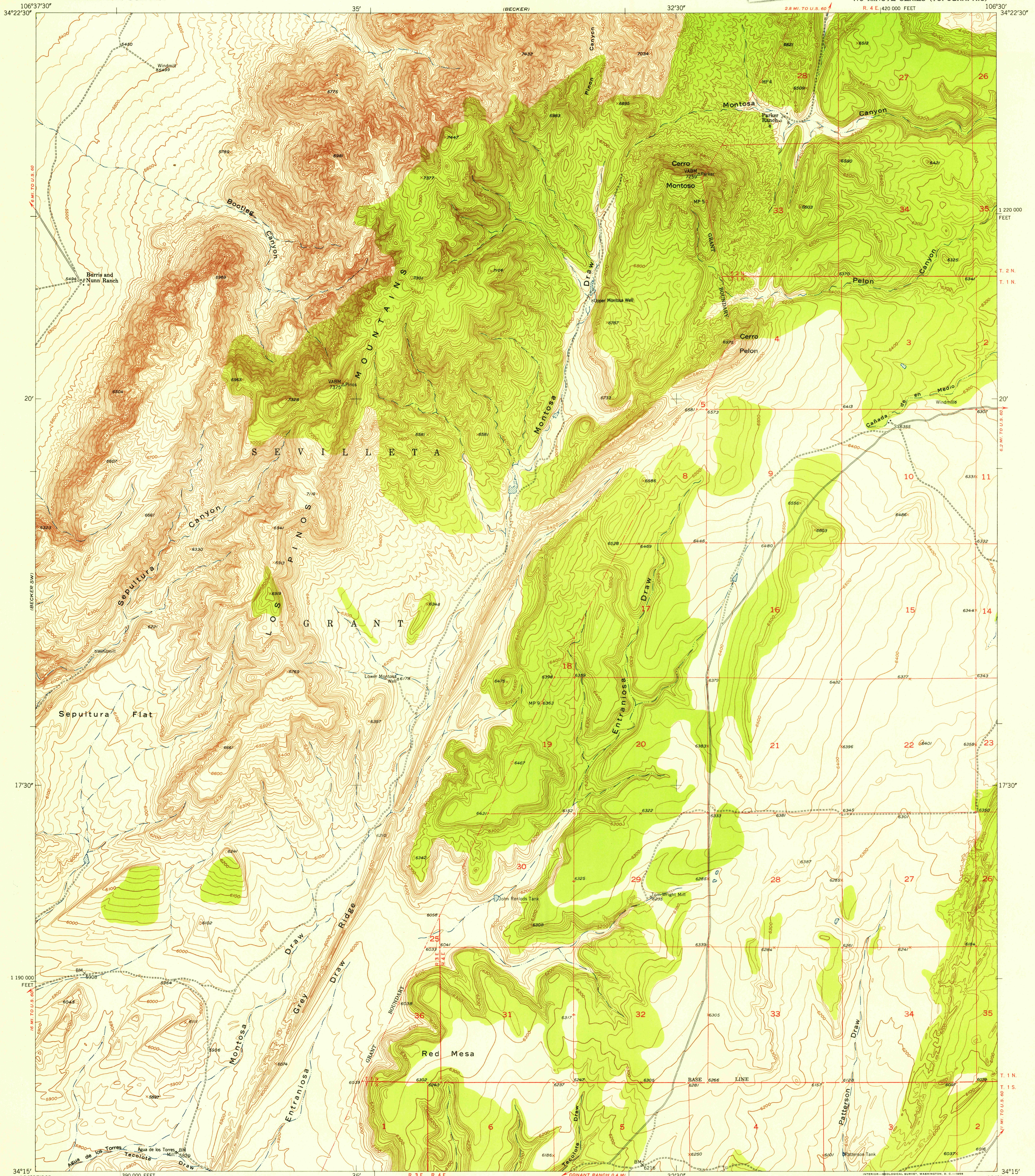
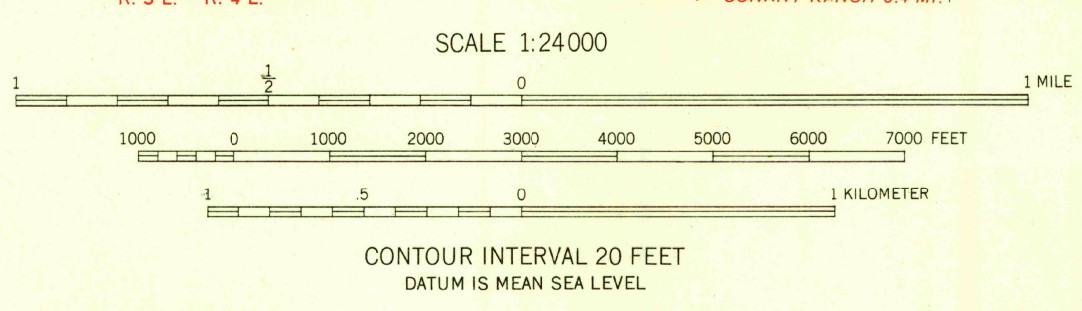
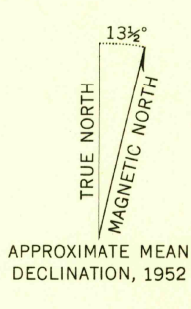


U.S.G.S.
FILE COPY
Inspection and Editing



Mapped, edited, and published by the Geological Survey
Control by USGS and USC&GS
Topography from aerial photographs by multiplex methods
by Tennessee Valley Authority 1951
Aerial photographs taken 1947. Field check 1952
Polyconic projection. 1927 North American datum
10,000-foot grid based on New Mexico coordinate system,
central zone



USGS
Historical File
Topographic Division

ROAD CLASSIFICATION

| | | |
|-------------|----------------|-----------------|
| Heavy-duty | 4 LANE 16 LANE | Light-duty |
| Medium-duty | 4 LANE 16 LANE | Unimproved dirt |
| U. S. Route | | State Route |



U.S.G.S.
FILE COPY
Inspection and Editing

CERRO MONTOSO, N. MEX.
N3415-W10630/7.5
1952

THIS MAP COMPLIES WITH NATIONAL MAP ACCURACY STANDARDS
FOR SALE BY U. S. GEOLOGICAL SURVEY, FEDERAL CENTER, DENVER, COLORADO OR WASHINGTON 25, D. C.
A FOLDER DESCRIBING TOPOGRAPHIC MAPS AND SYMBOLS IS AVAILABLE ON REQUEST

OCT 9 1953